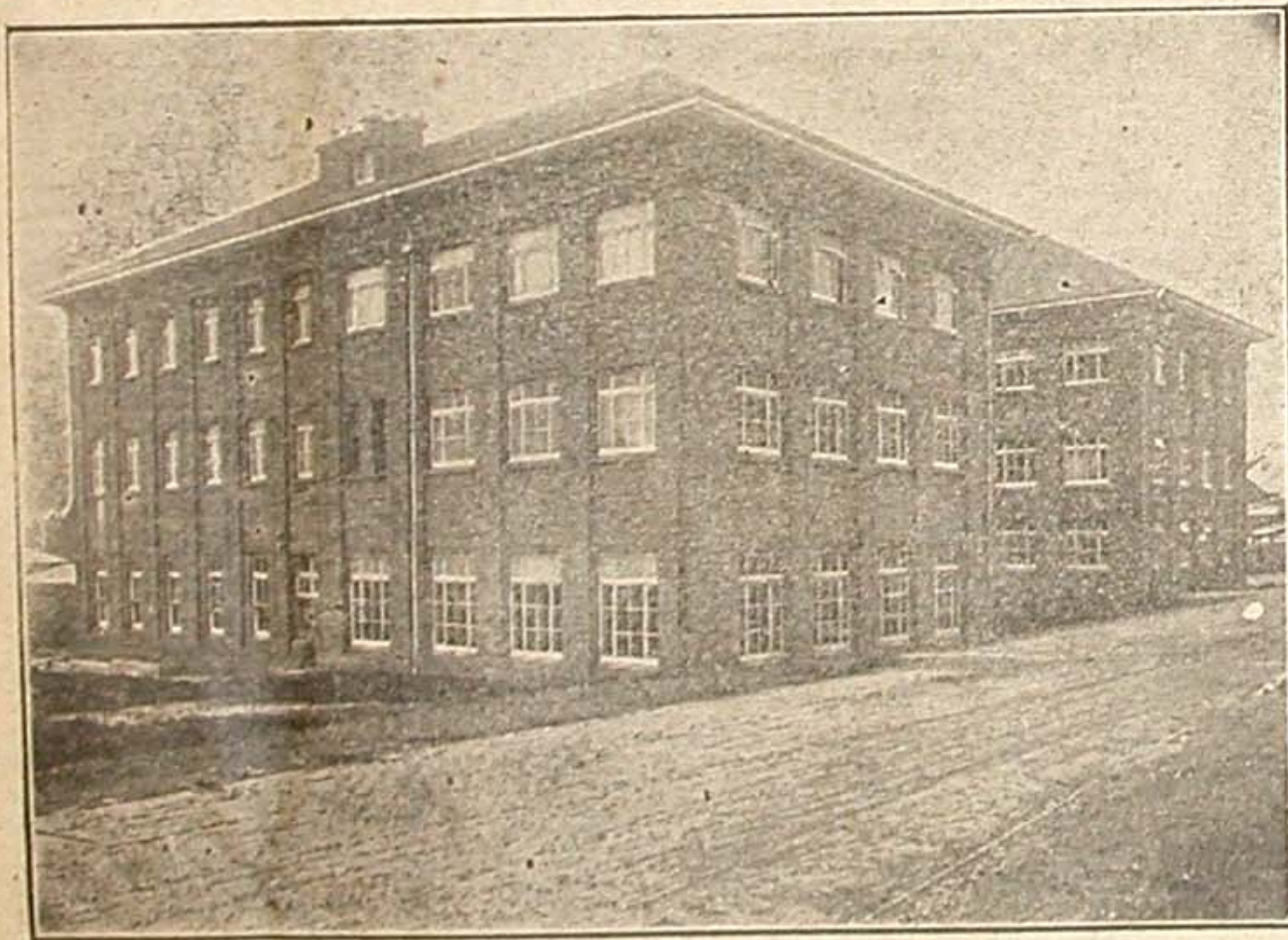
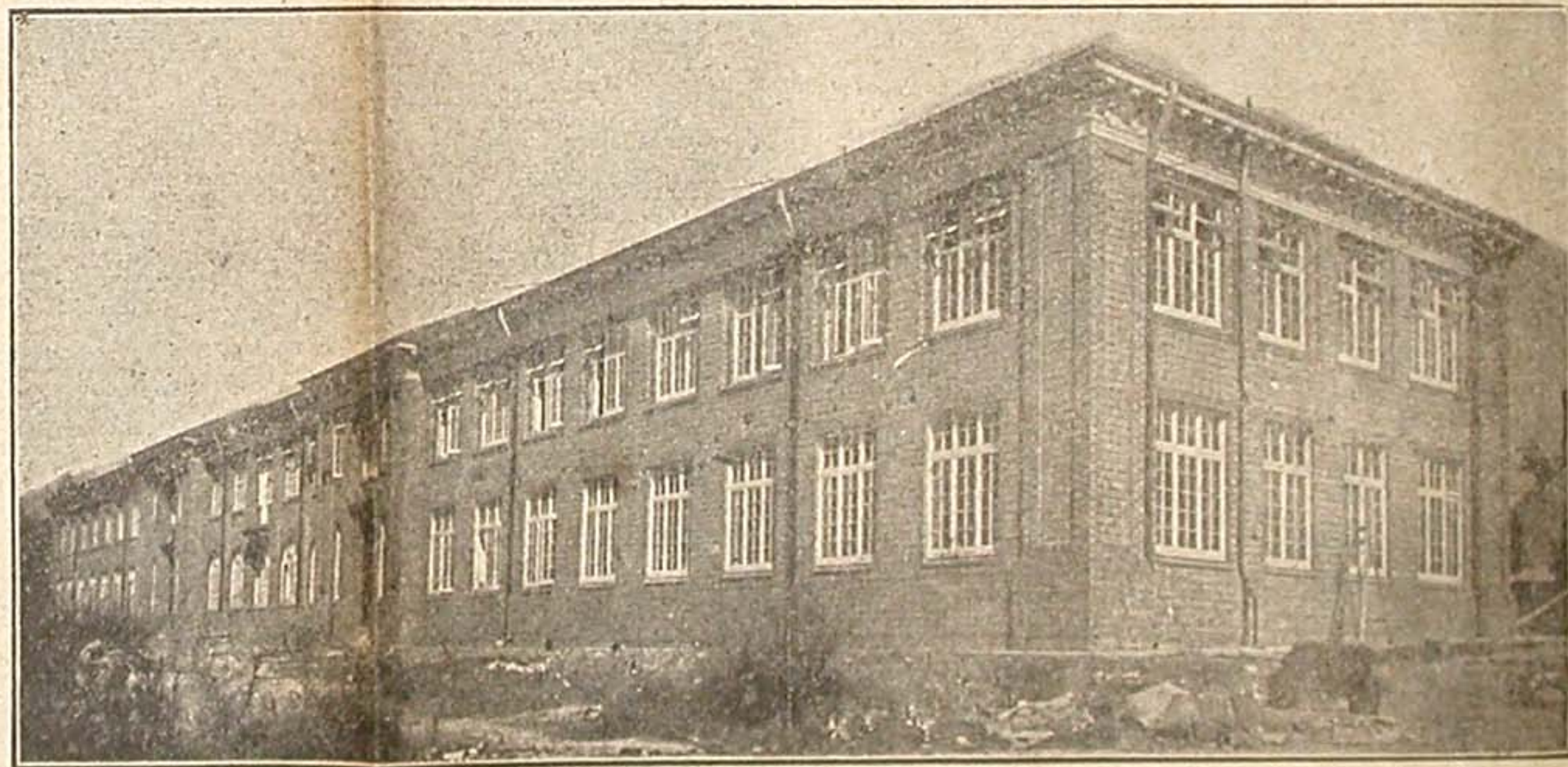


DARLING BUILDING.



This imposing structure, which was built to the memory of the late Mr. John Darling, cost about £50,000 to build and equip. It houses the departments of physiology, bio-chemistry, histology, the Sheridan research laboratory and pathological and zoological departments, and the medical library.

ENGINEERING AND PHYSICS BUILDING.



This great and commodious pile is the most recent addition to the fine collection of buildings on the University grounds. In it are contained modern scientific laboratories for the study of electrical, mechanical, and hydraulic engineering. It also includes the physics department, and elaborate testing rooms and workshops. It was completed about two months ago, but will be officially opened during next week's celebrations. The Government paid about £48,500 for the cost of construction, and the University authorities are spending more than £12,000 on its equipment.