

## PUBLISHED VERSION

Ellis, D R.; Sors, T G.; Brunk, D G.; Albrecht, C.; Orser, C.; Lahner, B.; Wood, K V.; Harris, Hugh Hamlyn; Pickering, I J.; Salt, D E.

Production of Se-methylselenocysteine in transgenic plants expressing selenocysteine methyltransferase, *BMC Plant Biology*, 2004; 4 (28):Article 1.

Copyright © 2004 Ellis et al; licensee BioMed Central Ltd.

### PERMISSIONS

<http://www.biomedcentral.com/info/about/license>

This is an Open Access article distributed under the terms of the Creative Commons Attribution License (<http://creativecommons.org/licenses/by/2.0>), which permits unrestricted use, distribution, and reproduction in any medium, provided the original work is properly cited.

BioMed Central Open Access license agreement

Brief summary of the agreement:

Anyone is free:

- to copy, distribute, and display the work;
- to make derivative works;
- to make commercial use of the work;

Under the following conditions: Attribution

- the original author must be given credit;
- for any reuse or distribution, it must be made clear to others what the license terms of this work are;
- any of these conditions can be waived if the authors gives permission.

2<sup>nd</sup> May 2011

<http://hdl.handle.net/2440/47037>

Research article

Open Access

## Production of Se-methylselenocysteine in transgenic plants expressing selenocysteine methyltransferase

Danielle R Ellis<sup>1,2</sup>, Thomas G Sors<sup>1</sup>, Dennis G Brunk<sup>1</sup>, Carrie Albrecht<sup>1</sup>, Cindy Orser<sup>3</sup>, Brett Lahner<sup>1</sup>, Karl V Wood<sup>4</sup>, Hugh H Harris<sup>5,6</sup>, Ingrid J Pickering<sup>5,7</sup> and David E Salt\*<sup>1</sup>

Address: <sup>1</sup>Center for Plant Environmental Stress Physiology, 1165 Horticulture Building, Purdue University, West Lafayette, IN 47907, USA, <sup>2</sup>Visiting Scientist: NuCycle Therapy, Inc, Hillside, NJ, 07205, USA, <sup>3</sup>Arete Associates, Gaithersburg, MD 20878, USA, <sup>4</sup>Chemistry Department, Purdue University, West Lafayette, IN 47907, USA, <sup>5</sup>Stanford Synchrotron Radiation Laboratory, Stanford Linear Accelerator Center, Menlo Park, CA 94025, USA, <sup>6</sup>School of Chemistry, University of Sydney, NSW, 2006, Australia and <sup>7</sup>Department of Geological Science, University of Saskatchewan, Saskatoon, SK S7N 5E2, Canada

Email: Danielle R Ellis - ellisd@purdue.edu; Thomas G Sors - tsors@purdue.edu; Dennis G Brunk - brunkdennis@hotmail.com; Carrie Albrecht - dsalt@purdue.edu; Cindy Orser - orser@arete-dc.com; Brett Lahner - lahner@hort.purdue.edu; Karl V Wood - kvw@purdue.edu; Hugh H Harris - Ingrid.pickering@usask.ca; Ingrid J Pickering - Ingrid.pickering@usask.ca; David E Salt\* - dsalt@purdue.edu

\* Corresponding author

Published: 28 January 2004

Received: 10 November 2003

BMC Plant Biology 2004, 4:1

Accepted: 28 January 2004

This article is available from: <http://www.biomedcentral.com/1471-2229/4/1>

© 2004 Ellis et al; licensee BioMed Central Ltd. This is an Open Access article: verbatim copying and redistribution of this article are permitted in all media for any purpose, provided this notice is preserved along with the article's original URL.

### Abstract

**Background:** It has become increasingly evident that dietary Se plays a significant role in reducing the incidence of lung, colorectal and prostate cancer in humans. Different forms of Se vary in their chemopreventative efficacy, with Se-methylselenocysteine being one of the most potent. Interestingly, the Se accumulating plant *Astragalus bisulcatus* (Two-grooved poison vetch) contains up to 0.6% of its shoot dry weight as Se-methylselenocysteine. The ability of this Se accumulator to biosynthesize Se-methylselenocysteine provides a critical metabolic shunt that prevents selenocysteine and selenomethionine from entering the protein biosynthetic machinery. Such a metabolic shunt has been proposed to be vital for Se tolerance in *A. bisulcatus*. Utilization of this mechanism in other plants may provide a possible avenue for the genetic engineering of Se tolerance in plants ideally suited for the phytoremediation of Se contaminated land. Here, we describe the overexpression of a selenocysteine methyltransferase from *A. bisulcatus* to engineer Se-methylselenocysteine metabolism in the Se non-accumulator *Arabidopsis thaliana* (Thale cress).

**Results:** By over producing the *A. bisulcatus* enzyme selenocysteine methyltransferase in *A. thaliana*, we have introduced a novel biosynthetic ability that allows the non-accumulator to accumulate Se-methylselenocysteine and  $\gamma$ -glutamylmethylselenocysteine in shoots. The biosynthesis of Se-methylselenocysteine in *A. thaliana* also confers significantly increased selenite tolerance and foliar Se accumulation.

**Conclusion:** These results demonstrate the feasibility of developing transgenic plant-based production of Se-methylselenocysteine, as well as bioengineering selenite resistance in plants. Selenite resistance is the first step in engineering plants that are resistant to selenate, the predominant form of Se in the environment.

## Background

Selenium is an essential nutrient for animals, microorganisms and some other eukaryotes [1]. While Se deficiency is rare in the US, it does occur in several low Se parts of the world such as China, and can lead to heart disease, hypothyroidism and a weakened immune system [2,3]. The toxic effects of excess Se have been known for some time. Short-term consumption of high levels of Se may cause nausea, vomiting, and diarrhea, whereas chronic consumption of high concentrations of Se compounds can result in a disease called selenosis [4]. Only one form of Se, selenium sulfide, has been implicated as a carcinogen [4]. The recognition of Se bioaccumulation and resulting wildlife toxicity at Kesterson reservoir in California and other sites has resulted in a surge of interest in phytoremediation of Se [5-8]. Selenium in the environment can be the result of either natural geological processes or human activities. The USGS has identified 160,000 miles<sup>2</sup> of land in the western US enriched in Se from natural processes that is susceptible to irrigation-induced Se contamination, including 4,100 miles<sup>2</sup> of land currently irrigated for agriculture [9]. Selenium pollution can also arise from various industrial and manufacturing processes including procurement, processing, and combustion of fossil fuels [10], and mining [11].

Interestingly, in the last decade it has become increasingly evident that Se also has potential health benefits. Anticarcinogenic activities of specific organic forms of Se against certain types of cancer have been demonstrated [3,12-14]. In a long term, double-blind study, supplemental dietary Se was associated with significant reductions in lung, colorectal and prostate cancer in humans [3]. Other studies have also demonstrated the chemoprotective effects of Se against breast, liver, prostate, and colorectal cancers in model systems [15-17]. Importantly, there is a great deal of variation in the efficacy of different Se compounds against cancer [13,18]. Numerous studies have demonstrated the efficacy of Se-methylselenocysteine (MeSeCys) in preventing mammary cancer in rat model systems [16,19-23], and importantly, MeSeCys has been shown to be twice as active as Se-methionine (the primary component of Se-yeast supplements) in preventing the development of mammary tumors in rats [18]. Furthermore, MeSeCys in both garlic and broccoli has also been shown to be more effective than either Se-methionine (SeMet) in yeast, or broccoli supplemented with selenite, at reducing both the incidence of mammary and colon cancer in rats [19,21]. This nonprotein seleno amino acid is produced in certain plants including members of the *Brassica* and *Allium* genera [3,24], and in Se accumulating plants such as *Astragalus bisulcatus* [25,26]. While the specific mechanism for the anticancer activity of Se has not been fully elucidated, multiple studies have demonstrated the ability of Se to affect the cell cycle and induce apoptosis in cancer

cell lines [14,24,27-35]. There is also evidence that Se may inhibit tumor angiogenesis [36,37]. Both of these activities would inhibit progression of early cancerous lesions.

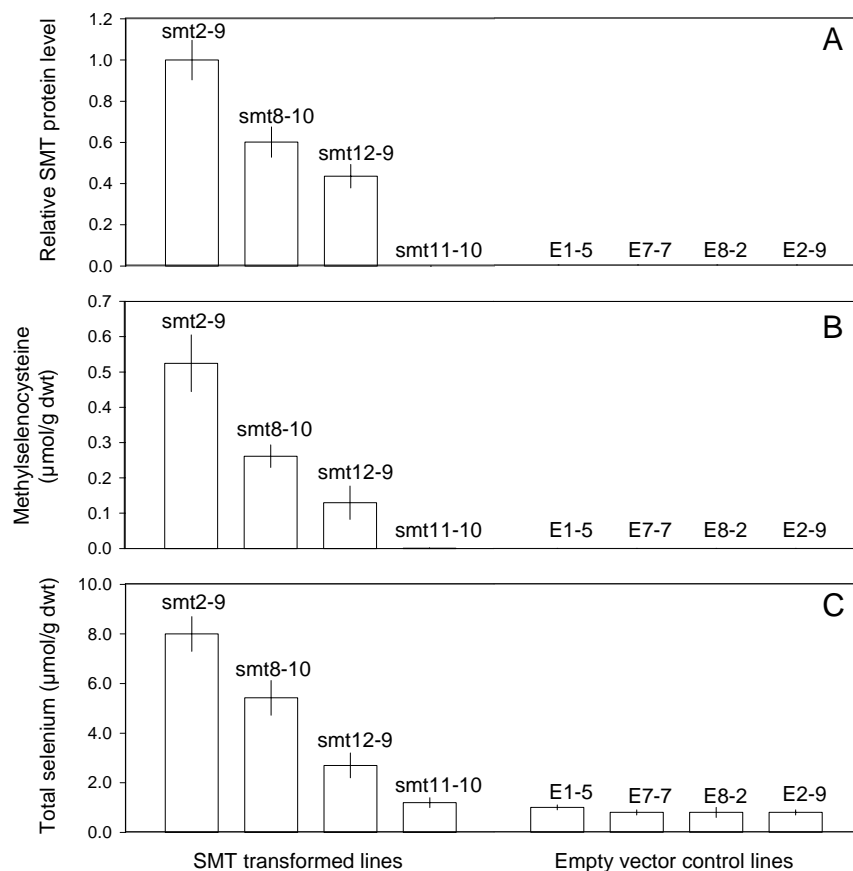
Plants primarily take up Se as selenate or selenite [38], which is then metabolized, via the sulfur assimilation pathway, resulting in the production of selenocysteine, SeMet and other Se analogues of various S metabolites, as reviewed by Ellis and Salt (2003) [39]. The nonspecific incorporation of seleno amino acids into proteins is thought to contribute to Se toxicity [40]. One proposed mechanism of Se tolerance in plants is the specific conversion of potentially toxic seleno amino acids into nonprotein derivatives such as MeSeCys [41,42]. Some *Brassica* and *Allium* species, when grown in Se enriched medium, can accumulate 0.1–2.8  $\mu\text{mol g}^{-1}$  dry weight MeSeCys or its functional equivalent  $\gamma$ -glutamylmethylselenocysteine ( $\gamma\text{GluMeSeCys}$ ) [13,15,16,21,24,43]. However, certain specialized Se accumulating plants, such as *A. bisulcatus*, accumulate up to 68  $\mu\text{mol g}^{-1}$  dry weight Se (6000  $\mu\text{g g}^{-1}$  dry weight), of which 90–95% is MeSeCys in young leaves [44-46].

Selenocysteine methyltransferase (SMT), the enzyme responsible for the methylation of selenocysteine to MeSeCys in *A. bisulcatus*, has recently been cloned and characterized [47]. The availability of such genetic material opens a practical avenue for the development of plants with an enhanced ability to biosynthesize MeSeCys. Such plants would be expected to not only be more resistant to Se, a valuable trait for phytoremediation of Se contaminated land, but also provide a plant based source of the anticarcinogenic compound MeSeCys [44]. Here, we describe the successful use of *A. bisulcatus* genetic material to engineer MeSeCys metabolism in the Se non-accumulator *A. thaliana*. By over-producing the *A. bisulcatus* enzyme SMT in *A. thaliana*, we have introduced a novel biosynthetic ability that has increased the concentration of MeSeCys and its functional derivative  $\gamma\text{GluMeSeCys}$ , from essentially non-detectable levels in the leaves of wild-type *A. thaliana* up to 3.9  $\mu\text{mol g}^{-1}$  dry weight in shoots.

## Results and Discussion

### Se speciation and accumulation

Over-production of SMT in *A. thaliana* (Fig 1A) increased the accumulation of MeSeCys from essentially zero in control plants (Fig 1B) to an average of 0.5  $\mu\text{mol g}^{-1}$  dry weight in the highest SMT accumulating line (Fig 1B), with MeSeCys concentrations ranging from 0.09 – 1.3  $\mu\text{mol g}^{-1}$  dry weight in individual plants from this line. MeSeCys accumulation was strongly correlated with the level of SMT protein in transgenic plants (Fig 1A and Fig 1B), confirming a causal link between SMT accumulation and the biosynthesis and accumulation of MeSeCys.



**Figure 1**

**Impact of SMT protein levels on accumulation of MeSeCys and total Se.** (A) Relative SMT protein accumulation. Relative SMT protein levels were determined from digitized immunoblots, and represent the average band intensity ( $\pm$  SE) from 12 – 18 individual plants for each line. (B) Concentration of MeSeCys in transgenic plants. MeSeCys was quantified using HPLC (AccQ Tag amino acid analysis system) and its identity confirmed using MALDI-MS. Data represents the average ( $\pm$  SE) MeSeCys concentrations in 11 – 18 individual plants for each line. (C) Concentration of total Se in transgenic plants. Total Se was quantified by ICP-MS, and data represents the average ( $\pm$  SE) of 7 – 13 individual plants for each line.

To further characterize the effect of SMT over-production, Se was extracted from shoot tissue and speciated using HPLC/ICP-MS and HPLC-ESI-MS. Of the total shoot Se in smt2-9, 27% was unextractable in the aqueous phase of a methanol/chloroform/water extraction, and assumed to represent mainly Se assimilated into proteins. Of the extractable Se, HPLC-ESI-MS and quantitative HPLC/ICP-MS revealed that 26%, or 1.16  $\mu\text{mol g}^{-1}$  shoot dry weight, to be  $\gamma\text{GluMeSeCys}$ , a derivative of MeSeCys (Table 1A, Figure 2). The identity of this compound was confirmed by coelution of Se in peak 4 with an ion of  $m/z = 313$   $[\text{M}+\text{H}]^+ [^{80}\text{Se}]$  (Figure 2A,2C) showing the predicted Se isotopic ratio [ $^{76}\text{Se}$ (9%),  $^{77}\text{Se}$ (8%),  $^{78}\text{Se}$ (24%),  $^{80}\text{Se}$ (50%),  $^{82}\text{Se}$ (9%)] [21] and a consistent empirical for-

mula derived from accurate mass measurement.  $\gamma\text{GluMeSeCys}$ , is known to accumulate to high concentrations in both Se exposed garlic [21] and *A. bisulcatus* seeds [25].  $\gamma\text{GluMeSeCys}$  is comparable to MeSeCys with regard to its anticarcinogenic capacity [16], with  $\gamma\text{GluMeSeCys}$  being rapidly converted to MeSeCys by a transpeptidase in the body.

The majority of the remaining extractable Se eluted in an early running Se peak that contains MeSeCys, as identified by coelution of Se in this peak with an ion of  $m/z = 167$   $[\text{M}+\text{H}-\text{NH}_3]^+ [^{80}\text{Se}]$  (Figure 2A,2B) showing the predicted Se isotopic ratio [ $^{76}\text{Se}$ (9%),  $^{77}\text{Se}$ (8%),  $^{78}\text{Se}$ (24%),  $^{80}\text{Se}$ (50%),  $^{82}\text{Se}$ (9%)], and a consistent empirical formula

**Table 1: Identity and percent composition of Se species in shoot tissue of SMT over-producing *A. thaliana* line smt2-9.**

Se species	Peak #	t <sub>R</sub> (min)	m/z	μmol g <sup>-1</sup> dry weight	% of extractable shoot Se
<sup>1</sup> Selenite	nd	nd	nd	0.16	3
<sup>2</sup> MeSeCys	1	4.75	167 (M+H-NH <sub>3</sub> ) <sup>+</sup>	0.71	12
<sup>2</sup> MeSeCys	2	6.25	167 (M+H-NH <sub>3</sub> ) <sup>+</sup>	1.68	31
<sup>2</sup> Unidentified	3	8.75	nd	0.27	5
<sup>3</sup> γGluMeSeCys	4	7.5	313 (M+H) <sup>+</sup>	1.16	26
<sup>3</sup> Unidentified	5	10.5	nd	0.37	6
<sup>3</sup> Unaccounted	-	-	-	-	17

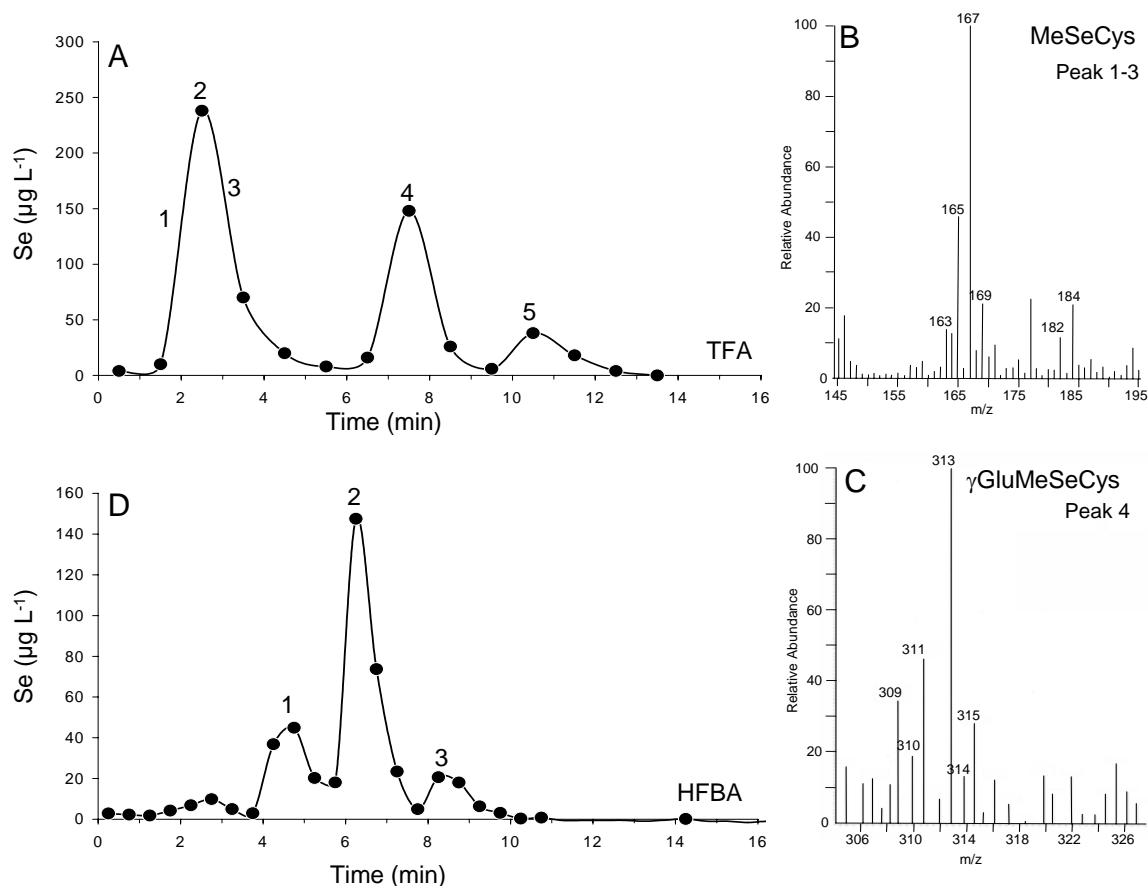
<sup>1</sup>Calculated using XAS data. <sup>2</sup>Mobile phase water-methanol (99:1, v/v) 0.1% HFBA. <sup>3</sup>Mobile phase water-methanol (99:1, v/v) 0.1% TFA. HPLC fractions (0.5 – 1.0 ml) were collected and analyzed for total Se by ICP-MS. Replicate chromatography was also performed using HPLC-ESI-MS to confirm the identity of the compounds in the Se containing peaks. The various Se compounds were quantified based on their Se content. Chromatography and mass spectroscopy data shown in Figure 2.

derived from accurate mass measurement. Authentic MeSeCys standard also showed a major ion with  $m/z = 167$ , representing the loss of 17 as ammonia from  $m/z = 184$  (data not shown). This early running Se-containing peak likely represents a mixture of Se-containing compounds [43], and was further resolved using the strong ion-pairing reagent HFBA to reveal the presence of three Se-containing compounds (Figure 2C, peak 1, 2 and 3). Peaks 1 and 2 were identified as MeSeCys by the presence of an ion of  $m/z = 184$  [M+H]<sup>+</sup> [<sup>80</sup>Se] and fragmentation of this ion, by the loss of ammonia, to  $m/z = 167$  [M+H-NH<sub>3</sub>]<sup>+</sup> [<sup>80</sup>Se]. Elution of MeSeCys as a double peak has been previously observed, and is thought to be due to its partial protonation [43]. Quantification of the total Se in these two peaks revealed that MeSeCys represents 43% of the total extractable Se (Table 1), or 2.4 μmol g<sup>-1</sup> shoot dry weight. For this analysis, smt2-9 shoot samples containing the highest concentration of MeSeCys, determined using the AccQ Tag amino acid analysis system, were used. MeSeCys concentrations of 1.3 and 2.4 μmol g<sup>-1</sup> dry weight, quantified using these two independent methods differ significantly, and we suspect that AccQ Tag may underestimate the concentration of MeSeCys due to the reduced derivatization efficiencies observed with standard MeSeCys. Of the Se injected onto the column, only 17% was found to be unaccounted for by peaks 1–5 when eluted with mobile phase containing 0.1% TFA (Figure 2A, Table 1). When using HFBA as the ion pairing reagent (Figure 2D), γGluMeSeCys was not expected to be eluted under the conditions used, leading to 28% reduction (83% – 55%) in recovery of injected Se.

The minor Se peak (Figure 2, peak 5) representing 6 % of total extractable Se (Table 1), most likely represent a doublet peak of γGluMeSeCys produced by partial protonation [43]. MeSeCys and its derivative γGluMeSeCys comprise 75% of the total extractable Se, or 3.9 μmol g<sup>-1</sup> shoot dry weight, in SMT over-producing *A. thaliana* line smt2-9 (Table 1).

X-ray absorption spectroscopy (XAS) can be used to obtain direct information on the *in vivo* speciation of Se in plants, avoiding the possibility of extraction artifacts [41,42]. XAS of shoot tissue from SMT over-producing *A. thaliana* indicates that the majority of shoot Se is associated with two C atoms (R-Se-R) (Fig 3), and the concentration of Se in this chemical form increases in direct proportion to the level of SMT over-production (Fig 1A, Fig 3). XAS results are consistent with MeSeCys and its derivative γGluMeSeCys accounting for the majority of Se *in planta* in the SMT over producing plants. The XAS also revealed the presence of a minor selenonium species (Fig 3), which may represent Se-adenosylselenohomocysteine as observed in yeast [21]. This compound would be expected to be strongly retained during HPLC [43], and may represent a portion of the 17% of Se in the smt2-9 extracts that was not recovered from the column during HPLC/ICP-MS (Figure 2A, Table 1).

Exposure of plants to selenate produced no detectable MeSeCys in either SMT over-producing plants or controls (data not shown). Measurement of Se speciation by XAS in selenate treated plants revealed that approximately 70% of total Se remained as selenate in both SMT over-producing and control plants. This confirmed that reduction of selenate to selenite is a rate-limiting step for Se assimilation into selenocysteine in plants as established previously [48], and explains our observation that SMT over-production does not significantly increase the biosynthesis of MeSeCys in selenate exposed plants. The XAS speciation data also supports the conclusion that over production of SMT does not affect the rate of selenate reduction. However, by exposing SMT over-producing plants to selenite, the rate-limiting step of selenate reduction is bypassed and only 1 – 4% of the accumulated Se remains as selenite in SMT over-producing plants, and 3 – 11% in control plants (Fig 3). This high rate of selenite assimilation explains why, when SMT is present, MeSeCys



**Figure 2**

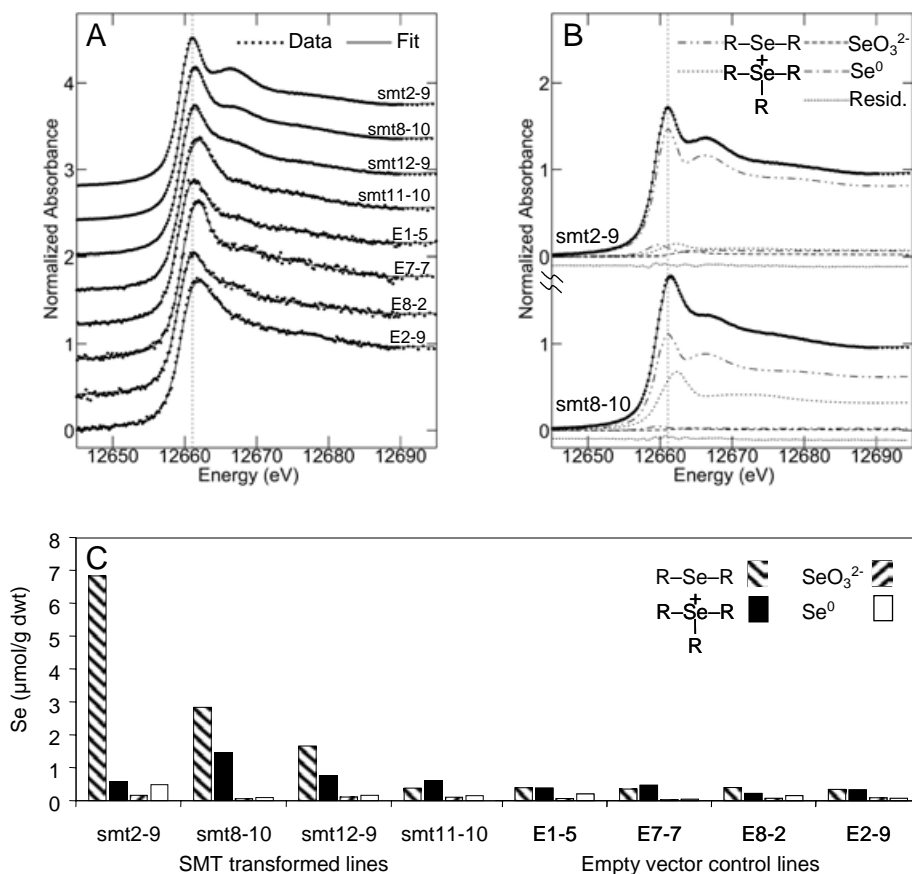
**Speciation of Se in shoots of *A. thaliana* over-producing SMT.** (A) *Arabidopsis thaliana* *smt2-9* HCl extract injected onto a reverse phase C8 column, eluted with water:methanol (99:1 v/v) containing 0.1% TFA, and fractions analyzed for Se using ICP-MS with 83% recovery of injected Se. (B) Mass spectrum collected in the region of peak 1–3 from the chromatogram shown in Figure 2A, revealing the expected  $[M+H]^+ m/z = 184$  and  $[M+H-NH_3]^+ m/z = 167$  for MeSeCys, as well as the expected Se isotopic signature. (C) Mass spectrum collected in the region of peak 4 from chromatogram shown in Figure 2A, revealing the expected ion  $m/z = 313$  for  $\gamma$ GluMeSeCys, as well as the expected Se isotopic signature. (D) *Arabidopsis thaliana* *smt2-9* HCl extract injected onto a reverse phase C8 column, eluted with water:methanol (99:1 v/v) containing 0.1% HFBA, and fractions analyzed for Se using ICP-MS with 55% recovery of injected Se.

and  $\gamma$ GluMeSeCys are efficiently biosynthesized (Fig 1A,1B).

Significantly, along with accumulation of MeSeCys and  $\gamma$ GluMeSeCys, the concentration of total Se in shoots (Fig 1C) also positively correlates with SMT over production (Fig 1A). Total Se increases from approximately  $1 \mu\text{mol g}^{-1}$  dry weight in control plants (range  $31 - 168 \mu\text{g g}^{-1}$ ) up to  $8 \mu\text{mol g}^{-1}$  dry weight (range  $358 - 1020 \mu\text{g g}^{-1}$ ) in the highest SMT accumulating line (Fig 1C).

#### Selenium tolerance

Over-production of SMT resulted in a remarkable increase in resistance to selenite, with SMT accumulating plants showing both increased growth and reduced accumulation of stress related anthocyanin pigments (Fig 4A). To quantify selenite tolerance, a relative tolerance index was calculated that represents the percentage difference between the final fresh weight of each transgenic plant line after growth in the presence and absence of selenite. This relative tolerance measurement clearly establishes that selenite tolerance is strongly correlated with accumulation of MeSeCys, as well as SMT production in 4 inde-

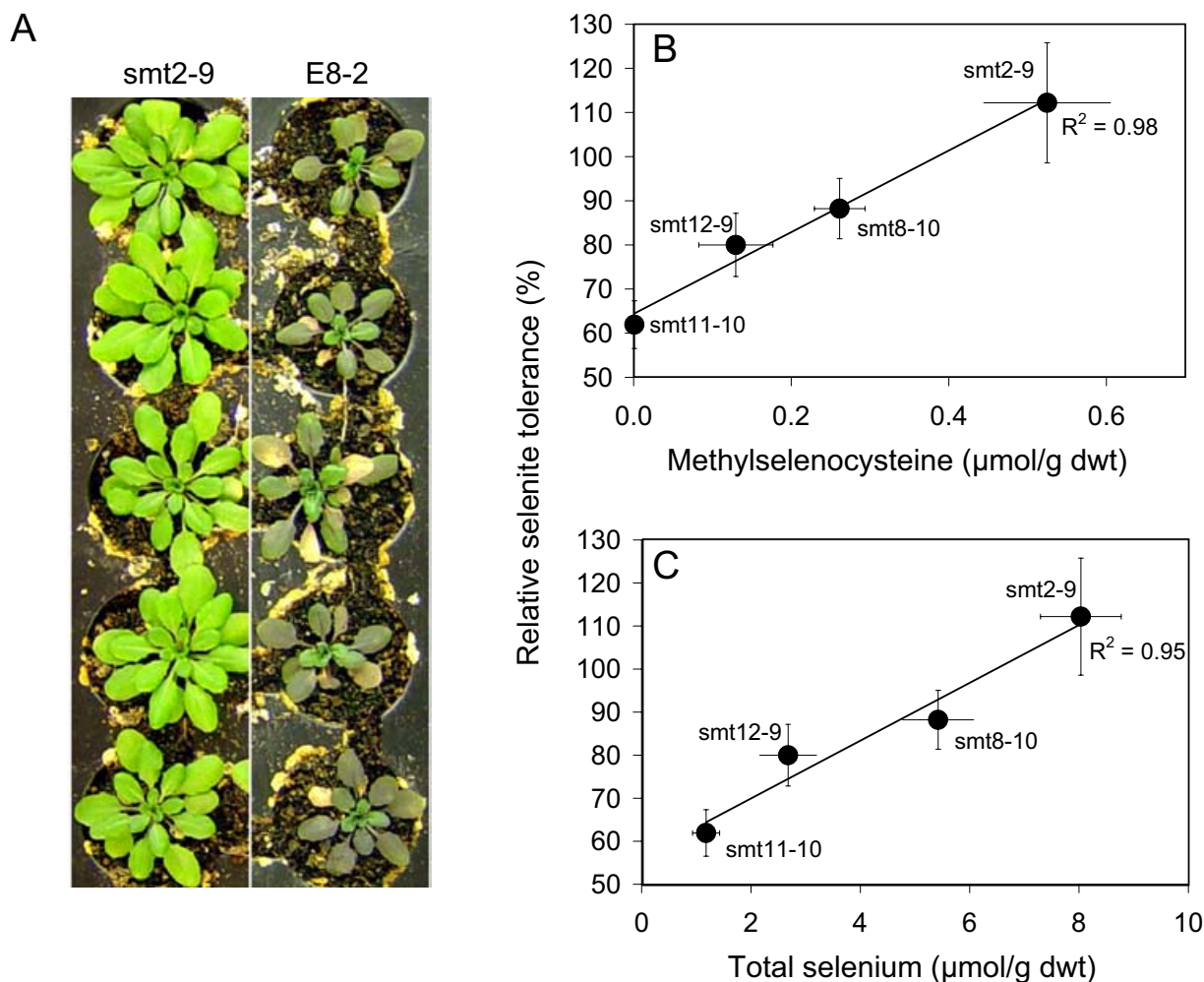


**Figure 3**

**Se K X-ray absorption near-edge spectra of shoots of *A. thaliana* over-producing SMT and control plants. (A)** Normalized spectra of different plant lines (filled circles), overlaid with the results of fitting each spectrum to a linear combination of spectra of standards (solid line). **(B)** Fit deconvolutions for two examples of the samples shown in A. Each panel shows the data and fit (as in A), the residual (dotted line beneath) and the spectra of standards scaled according to their contributions to the fit. The best fits were obtained using selenomethionine (RSeR), aliphatic selenonium (R<sub>3</sub>Se<sup>+</sup>), selenite (SeO<sub>3</sub><sup>2-</sup>) (all in aqueous solution) and elemental selenium (Se<sup>0</sup>). Other standards (not shown) were tested: aqueous selenate did not contribute to the fits, and dimethyl selenoxide gave poorer fits (as judged by the residuals) than the selenium species. Note that selenomethionine is chosen to be representative of RSeR species, and its spectrum is not reliably distinguishable from that of MeSeCys. **(C)** Chemical speciation of Se in shoots of *A. thaliana* over-producing SMT and control plants. Se K X-ray absorption near-edge spectra were fit, as described in Figure 2, to produce quantitative data on the speciation of Se in shoots of *A. thaliana*. Total Se accumulation (Fig 1C) and percent speciation are combined to produce absolute concentrations of the various Se species.

pendent transgenic lines (Fig 4B). The correlation between MeSeCys biosynthesis and selenite tolerance strongly supports the proposed role of MeSeCys in Se tolerance in *Astragalus* [40,47]. However, SMT over-production does not increase tolerance to selenate (data not shown). Because selenate reduction to selenite is very inefficient in *A. thaliana* and SMT acts to detoxify Se downstream of selenite, it is consistent that SMT does not confer

tolerance to selenate. From this, we propose that selenate is directly toxic to plants and efficient reduction of selenate to selenite is required for tolerance. This is supported by the earlier observation that efficient reduction of selenate to selenite, by overexpression of ATP sulfurylase [48], confers significant tolerance to selenate in *Brassica juncea*. Whereas Pilon-Smit et al. (1999) [48] concluded that selenate tolerance was due to increased vola-



**Figure 4**  
**Selenite tolerance of SMT over-producing *A. thaliana*.** (A) Growth of SMT over-producing and empty vector control plants in soil treated with selenite. (B) Relative selenite tolerance in soil grown plants is positively correlated with the concentration of methylselenocysteine, and (C) total shoot Se concentration. Relative tolerance is quantified as the percent fresh weight of selenite treated plants relative to the same line grown in the absence of selenite. Data represents averages ( $\pm$  SE) from between 10 – 16 individual plants from each line.

tilization of Se in the ATP sulfurylase over-producing plants, we propose that the efficient reduction of selenate is the primary cause of enhanced Se resistance. We would predict that the increased selenocysteine produced in these transgenic plants was detoxified by the low level SMT activity known to exist in *B. juncia* [43]. In contrast, overexpression of ATP sulfurylase in tobacco cell culture, which does not produce MeSeCys, did not result in measurable selenate tolerance [49]. We suggest that Se is toxic to plants at two biochemical stages, directly as

selenate [41] and via the biosynthesis of Se analogues of S amino acids [34]. The Se hyperaccumulator *A. bisulcatus* is known to accumulate both selenate and MeSeCys [41,46]. Therefore, we propose that these plants use SMT to detoxify selenocysteine, and also have the ability to detoxify selenate by utilizing a mechanism that may involve compartmentalization into the vacuole. This proposed mechanism has yet to be identified.



Furthermore, selenite tolerance was strongly correlated with total shoot Se accumulation, with the most tolerant lines accumulating the highest shoot Se concentrations (Fig 4C). This increased Se accumulation may be simply due to the more efficient uptake and transport of selenite in the healthy, SMT over-producing plants. However, another possible explanation would be that over-production of SMT may deplete cellular free cysteine, by methylation to methylcysteine (MeCys). Such depletion of cysteine would act to increase the activities of the sulfur assimilation enzymes serine acetyltransferase and O-acetylserine thiol lyase [50], leading to increased incorporation of Se into selenocysteine. This increased biosynthesis of selenocysteine, and accumulation of MeSeCys, would be expected to form a sink for Se, driving increased accumulation of Se into shoot tissue.

In support of this, expression of SMT does result in the accumulation of MeCys, a metabolite not normally observed in *A. thaliana* (data not shown). Methylcysteine and MeSeCys are produced in approximately equal concentrations, and biosynthesis of MeCys in the SMT-producing plants demonstrates that *in vivo* SMT has significant methyltransferase activity using either cysteine or selenocysteine as substrates. This contrasts the situation *in vitro* where SMT has very low activity with cysteine as a substrate [51]. Such *in planta* methyltransferase activity with cysteine as a substrate is also supported by the earlier observations that increasing the concentration of selenate in nutrient solution resulted in increased concentration of MeSeCys and a decrease in MeCys in *A. bisulcatus* [52], while increasing sulfate resulted in the increase in MeCys and a decrease in MeSeCys. This suggests that a common pathway is involved in the synthesis of both compounds.

## Conclusions

Although MeSeCys is one of the most biologically active Se compounds, the less active SeMet and selenite are the Se forms currently available in the majority of nutritional supplements. The genetic modification of plants to increase the levels of enzymes involved in Se metabolism into MeSeCys would provide a possible source of this chemopreventative molecule. The results presented here demonstrate, for the first time, the practicality of using genetic material from the Se hyperaccumulator *A. bisulcatus* to bioengineer plants that are enriched in MeSeCys, as previously proposed by Orser et al., (1999) [44]. Shoot tissue of *A. thaliana* over-producing SMT has a combined concentration of MeSeCys, and its functional equivalent  $\gamma$ GluMeSeCys, of up to  $3.9 \mu\text{mol g}^{-1}$  shoot dry weight (Table 1) after only 6-weeks growth including a 2-week exposure to selenite. Concentrations of MeSeCys and MeCys were also approximately equal in SMT over-producing plants. Since MeCys has been identified as a chemopreventative agent [53], such a dual function of SMT is

expected to further enhance the anticarcinogenic potential of this transgenic plant material. While garlic and ramps have been used to produce similar concentrations of MeSeCys and  $\gamma$ GluMeSeCys [15,21], production of plant material took 6 months [20] and biomass yields can be expected to be low. The ability to transfer the SMT gene into a higher biomass, rapidly growing, and edible plant could lead to a cost effective method of producing MeSeCys/ $\gamma$ GluMeSeCys enriched plant material.

The over-production of SMT in *A. thaliana* also leads to increased Se accumulation and selenite resistance. In the environment, Se occurs mainly as the selenate oxyanion. Detoxification of accumulated selenate requires its reduction to selenite and metabolism into a dead end metabolite such as MeSeCys. Therefore, the ability to engineer selenite resistance in plants, as demonstrated here, is a critical first step in the development of plants capable of hyperaccumulating Se from selenate. Further important steps in this process will be the engineering of enhanced uptake of selenate over sulfate, and its reduction to selenite. In our study, SMT over-producing plants were able to grow normally while containing up to  $1020 \mu\text{g g}^{-1}$  total foliar Se. Tolerance to such high internal foliar Se concentrations are within the same range observed for naturally evolved Se accumulator plants such as *A. bisulcatus* (25, 26), and if reproduced in a high biomass plant, these foliar Se concentrations are within the range required for practical phytoremediation of Se contaminated soils and waters. Therefore, engineering of selenite tolerance in plants moves us one step closer to our goal of bioengineering plants ideally suited for phytoremediation of Se.

## Methods

### Plant transformation and growth

The gene encoding selenocysteine methyltransferase (SMT1) was amplified from *A. bisulcatus* as described previously [45], and cloned in the pKYLX plant transformation vector [54,55] downstream of the cauliflower mosaic virus (CaMV) 35S promoter [45]. *Arabidopsis thaliana* was transformed using *Agrobacterium* by floral dipping [56], and transformed seed selected on kanamycin. Empty pKYLX vector control lines were generated concurrently. Selected T1 plants were allowed to self fertilize, and plant lines homozygous for the SMT1 transgene selected in the T3 generation. Bulk T4 seed was collected and used in all experiments presented. Seeds were planted in Scotts Redi-earth artificial soil mix in 72-cell plug trays, cold treated at  $4^\circ\text{C}$  for 3-days to synchronize germination and grown in a climate-controlled room at  $19\text{--}24^\circ\text{C}$  with 10 hours of light at 90 to  $150 \mu\text{E}$ . After 4-weeks growth vegetative plants were watered with  $100 \mu\text{M}$  sodium selenite as needed for a further 2 weeks after which shoot tissue of individual plants was harvested, fresh weight determined,

washed in 18 MΩ water, ground in liquid nitrogen and stored at -80°C. Each individually stored plant sample was subsampled and used for subsequent analyses.

#### Analysis of total shoot Se

For analysis of total Se, samples of frozen plant material were dried overnight at 60°C, weighed and digested in concentrated HNO<sub>3</sub> acid (EM Omni Trace) at 118°C for 4 hours. Se was quantified in the samples using a Thermo Elemental PQ ExCell ICP-MS (Thermo elemental, Franklin, MA) with a gallium internal standard, a NIST traceable calibration standard and external drift correction [57].

#### Analysis of shoot Se speciation

To determine extractable and non-extractable Se, shoot tissue (0.25 g – 0.5 g fresh weight) was extracted in 10 ml methanol for 24 hr at 4°C, 6 ml water and 5 ml chloroform added [58] and total Se measured by ICP-MS in the aqueous phase, and in the chloroform and residual tissue. Extractable Se was functionally defined as the total Se extracted into the aqueous phase, and non-extracted Se was defined as the sum of that in the residual tissue and the chloroform. For routine quantification of MeSeCys and MeCys plant samples were extracted over night at 4°C in 50 mM HCl (2:1 v/w), with 78% recovery of total extractable Se. Alpha amino butyric acid was added to each extracted sample as an internal standard, the samples derivatized and analyzed using the AccQ Tag amino acid analysis system (Waters Corp., Milford, MA) using a Waters HPLC system consisting of a Waters Separation module 2695 with a Waters 2475 fluorescence detector. The identity of MeSeCys in the chromatogram was confirmed by coelution with an authentic MeSeCys standard and of the *m/z* = 354 ion characteristic of the MeSeCys [6-aminoquinolyl-N-hydroxy-succinimidyl carbamate] AccQ Tag derivative using MALDI-MS on post column fractions after cleanup on Dowex-1-acetate. The presence of Se in the fractions containing MeSeCys was confirmed by ICP-MS (Thermo Elemental PQ ExCell). Recoveries of MeSeCys during HPLC analysis were determined to be 100% using a MeSeCys spiked sample. The identity of MeCys was confirmed by coelution with an authentic standard and by GC-MS after 24 h of extraction in 50 mM HCl and subsequent derivatization with MTBSTFA following standard procedures [59]. Se speciation was further analyzed by HPLC/ICP-MS and HPLC-ESI-MS. Tissue was extracted in 50 mM HCl (2:1 v/w), injected onto a 5-μm Symmetry Shield RP8 (15 cm × 3.9 mm) column (Waters Corp., Milford, MA) and eluted with a mobile phase of water-methanol (99:1, v/v) containing either 0.1% TFA or HFBA at the resulting pH [43]. For quantification of Se in the eluant, fractions (0.5 – 1 mL) were collected and analyzed by ICP-MS (Thermo Elemental PQ ExCell). For molecular mass spectral studies the eluant was analyzed using electrospray ionization on a FinniganMAT LCO

(ThermoFinnigan Corp. San Jose, CA), or LC-Q-ToF micro (Waters Corp., Milford, MA) mass spectrometer system. A tissue sample from one representative plant from each transgenic and empty vector control line was also shipped on dry ice to the Stanford Synchrotron Radiation Laboratory (SSRL) for Se K-edge XAS analysis following our established protocols [45].

#### SMT protein quantification

Production of SMT in tissue samples from individual plants was determined by immunoblotting and quantified by digitizing developed immunoblots [45].

#### Authors' contributions

DES and CO co-conceived the experiment with DES guiding the work; DRE, TGS and DGB were primarily responsible for carrying it out with CA contributing to generation of transgenic plants, BL performing ICP-MS analysis, KVV performing LC-ESI-MS, and IJP and HHH performing XAS analysis.

#### Acknowledgments

This project was funded through an STTR grant from the NIH National Cancer Institute (R41 CA80444-01, R42 CA80444-02) awarded to NuCycle Inc. and subcontracted to DES. We would also like to thank Burt Ensley, Graham George, Michael Persans, Jeff Denault and Andrew Baker. The Stanford Synchrotron Radiation Laboratory is supported by the Department of Energy, Office of Biological and Environmental Research, and by the National Institutes of Health, National Center for Research Resources, Biomedical Technology Program.

#### References

- Birringer M, Pilawa S, Flohe L: **Trends in selenium biochemistry.** *Nat Prod Rep* 2002, **19**:693-718.
- Combs GF Jr: **Food system-based approaches to improving micronutrient nutrition: The case for selenium.** *BioFactors* 2000, **12**:39-43.
- Clark LC, Combs GF Jr, Turnbull BW, Slate EH, Chalker DK, Chow J, Davis LS, Glover RA, Graham GF, Gross EG, Krongrad A, Leshner JL Jr, Park HK, Sanders BB Jr, Smith CL, Taylor JR: **Effects of selenium supplementation for cancer prevention in patients with carcinoma of the skin.** *J Amer Med Assoc* 1996, **276**:1957-1963.
- Agency for Toxic Substances and Disease Registry** [<http://www.atsdr.cdc.gov/>]
- Ohlendorf HM, Hoffman DJ, Saiki MK, Aldrich TW: **Embryonic mortality and abnormalities of aquatic birds-Apparent impact of selenium from irrigation drainwater.** *Sci Total Environ* 1986, **52**:49-63.
- Banuelos GS: **The green technology of selenium phytoremediation.** *BioFactors* 2001, **14**:255-260.
- Berken A, Mulholland MM, LeDuc DL, Terry N: **Genetic Engineering of plants to enhance selenium phytoremediation.** *Crit Rev Plant Sci* 2002, **21**:567-582.
- Wu L: **Review of 15 years of research on ecotoxicology and remediation of land contaminated by agricultural drainage sediment rich in selenium.** *Ecotox Environ Safety* 2002 in press.
- Seiler RL, Skorupa JP, Peltz LA: **Areas susceptible to irrigation-induced selenium contamination of water and biota in the western United States.** *USGS Survey Cir* 1999, **1180**.
- Lemly AD: **Environmental implications of excessive selenium: A review.** *Biomed Environ Sci* 1997, **10**:415-435.
- Sharmasarkar S, Vance GF: **Ecological risk assessment: Soil and plant selenium at a reclaimed uranium mine.** *J Environ Qual* 2002, **31**:1516-1521.
- Reid M, Duffield-Lillico AJ, Garland L, Turnbull BW, Clark LC, Marshall JR: **Selenium supplementation and lung cancer inci-**

- dences: an update of the nutritional prevention cancer trial. *Cancer Epidemiol Biomarkers Prev* 2002, **11**:1285-1291.
13. Whanger PD: **Selenocompound in plants and animals and their biological significance.** *J Am College Nutr* 2002, **21**:223-232.
  14. Combs GF Jr, Gray WP: **Chemopreventive agents: selenium.** *Pharmacol Ther* 1998, **79**:179-192.
  15. Whanger PD, Ip C, Polan CE, Uden PC, Welbaum G: **Tumorigenesis, metabolism, speciation, bioavailability, and tissue deposition of selenium in selenium-enriched ramps (*Allium tricoccum*).** *J Agric Food Chem* 2000, **48**:5723-5730.
  16. Dong Y, Lisk D, Block E, Ip C: **Characterization of the biological activity of gamma-glutamyl-Se-methylselenocysteine: A novel, naturally occurring anticancer agent from garlic.** *Cancer Res* 2001, **61**:2923-2928.
  17. Vadgama JV, Wu Y, Shen D, Hsia S, Block J: **Effect of selenium in combination with adriamycin or taxol on several different cancer cells.** *Anticancer Res* 2000, **20**:1391-1414.
  18. Ip C, Ganther HE: **Relationship between the chemical form of selenium and anticarcinogenic activity.** In *Cancer Chemoprevention* Edited by: Wattenberg I, Lipkin M, Boon CW, Kellott GJ. Boca Raton, FL: CRC Press; 1992:479-488.
  19. Finley JW, Ip C, Lisk DJ, Davis CD, Hiuntze KJ, Whanger PD: **Cancer-protective properties of high-selenium broccoli.** *J Agric Food Chem* 2001, **49**:2679-2683.
  20. Ip C, Ganther HE: **Comparison of selenium and sulfur analogs in cancer prevention.** *Carcinogenesis* 1992, **13**:1167-1170.
  21. Ip C, Birringer M, Block E, Kotrebai M, Tyson J, Uden PC, Lisk D: **Chemical speciation influences comparative activity of selenium-enriched garlic and yeast in mammary cancer prevention.** *J Agric Food Chem* 2000, **48**:2062-2070.
  22. Lu J, Pei H, Ip C, Lisk DJ, Ganther H, Thompson HJ: **Effect of an aqueous extract of selenium-enriched garlic on in vitro markers and in vivo efficacy in cancer prevention.** *Carcinogenesis* 1996, **17**:1903-1907.
  23. Medina D, Thompson H, Ganther H, IP C: **Se-Methylselenocysteine: A new compound for chemoprevention of breast cancer.** *Nutr Cancer* 2001, **40**:12-17.
  24. Cai XJ, Block E, Uden PC, Zhang X, Quimby BD, Sullivan JJ: **Allium chemistry: Identification of selenoamino acids in ordinary and selenium-enriched garlic, onion, and broccoli using gas chromatography with atomic emission detection.** *J Agric Food Chem* 1995, **43**:1754-1757.
  25. Nigam SN, McConnel WB: **Seleno amino compounds from *Astragalus bisulcatus* isolation and identification of  $\gamma$ -L-glutamyl-Se-methyl-seleno-L-cysteine and Se-methylseleno-L-cysteine.** *Biochim Biophys Acta* 1969, **192**:185-190.
  26. Trelease SF, DiSomma AA, Jacobs AL: **Seleno-amino acid found in *Astragalus bisulcatus*.** *Science* 1960, **132**:618.
  27. Ganther HE, Lawrence JR: **Chemical transformations of selenium in living organisms. Improved forms of selenium for cancer prevention.** *Tetrahedron* 1997, **53**:12299-12310.
  28. Ip C: **Lessons from basic research in selenium and cancer prevention.** *J Nutr* 1998, **128**:1845-1854.
  29. Ip C, Dong Y, Ganther HE: **New concepts in selenium chemoprevention.** *Cancer Metast Rev* 2002, **21**:281-289.
  30. Lu J, Jiang C: **Antiangiogenic activity of selenium in cancer chemoprevention: metabolite-specific effects.** *Nutr Cancer* 2001, **40**:64-73.
  31. Foster SJ, Kraus RJ, Ganther HE: **The metabolism of selenomethionine, Se-methylselenocysteine, their selenonium derivatives, and trimethylselenonium in the rat.** *Arch Biochem Biophys* 1986, **251**:77-86.
  32. Andreadou I, Menge WMPB, Commandeur JNM, Worthington EA, Vermeulen NPE: **Synthesis of novel Se-substituted selenocysteine derivatives as potential kidney selective prodrugs of biologically active selenol compounds: evaluation of kinetics of  $\beta$ -elimination reactions in rat renal cytosol.** *J Med Chem* 1996, **39**:2040-2046.
  33. Sinha R, Kiley SC, Lu JX, Thompson HJ, Moraes R, Jaken S, Medina D: **Effects of methylselenocysteine on PKC activity, cdk2 phosphorylation and gadd gene expression in synchronized mouse mammary epithelial tumor cells.** *Cancer Lett* 1999, **146**:135-145.
  34. Wang Z, Jiang C, Lu J: **Induction of caspase-mediated apoptosis and cell-cycle G1 arrest by selenium metabolite methylselenol.** *Mol Carcinog* 2002, **34**:113-120.
  35. Kim T, Jung U, Cho DY, Chung AS: **Se-Methylselenocysteine induces apoptosis through caspase activation in HL-60 cells.** *Carcinogenesis* 2001, **22**:559-565.
  36. Jiang C, Ganther H, Lu J: **Monomethyl selenium-specific inhibition of MMP-2 and VEGF expression: Implications for angiogenic switch regulation.** *Mol Carcinog* 2000, **29**:236-250.
  37. Jiang C, Jiang W, Ip C, Ganther H, Lu J: **Selenium-induced inhibition of angiogenesis in mammary cancer at chemopreventive levels of intake.** *Mol Carcinog* 1999, **26**:213-225.
  38. Terry N, Zayed AM, De Souza MP, Tarun AS: **Selenium in higher plants.** *Annu Rev Plant Physiol Plant Mol Biol* 2000, **51**:401-432.
  39. Ellis DR, Salt DE: **Plants, selenium and human health.** *Curr Opin Plant Biol* 2003, **6**:1-7.
  40. Brown TA, Shrift A: **Exclusion of selenium from proteins in selenium-tolerant *Astragalus* species.** *Plant Physiol* 1981, **67**:1951-1953.
  41. Virupaksha TK, Shrift A: **Biochemical differences between selenium accumulator and non-accumulator *Astragalus* species.** *Biochim Biophys* 1965, **107**:69-80.
  42. Wang Y, Bock A, Neuhierl B: **Acquisition of selenium tolerance by a selenium non-accumulating *Astragalus* species via selection.** *Biofactors* 1999, **9**:3-10.
  43. Kotrebai M, Birringer M, Tyson JF, Block E, Uden PC: **Selenium speciation in enriched and natural samples by HPLC-ICP-MS and HPLC-ESI-MS with perfluorinated carboxylic acid ion-pairing agents.** *Analyst* 2000, **125**:71-78.
  44. Orser CS, Salt DE, Pickering IJ, Prince R, Epstein A, Ensley BD: **Brassica plants to provide enhanced human mineral nutrition: selenium phytoenrichment and metabolic transformation.** *J Med Food* 1999, **1**:253-261.
  45. Pickering IJ, Wright C, Bubner B, Ellis D, Persans MW, Yu EY, George GN, Prince RC, Salt DE: **Chemical form and distribution of selenium and sulfur in the selenium hyperaccumulator *Astragalus bisulcatus*.** *Plant Physiol* 2003, **131**:1-8.
  46. Pickering IJ, Prince RC, Salt DE, George GN: **Quantitative, chemically specific imaging of selenium transformation in plants.** *PNAS* 2001, **97**:10717-10722.
  47. Neuhierl B, Thanbichler M, Lottspeich F, Bock A: **A family of S-methylmethionine-dependent thiol/selenol methyltransferases.** *J Biol Chem* 1999, **274**:5407-5414.
  48. Pilon-Smits EAH, Hwang S, Lytle CM, Zhu Y, Tai JC, Bravo RC, Chen Y, Leustek T, Terry N: **Overexpression of ATP sulfurylase in Indian mustard leads to increased selenate uptake, reduction and tolerance.** *Plant Physiol* 1999, **119**:123-132.
  49. Hatzfeld Y, Cathala N, Grignon C, Davidian JC: **Effect of ATP sulfurylase overexpression in bright yellow 2 tobacco cells: Regulation of ATP sulfurylase and  $SO_4^{2-}$  transport activities.** *Plant Physiol* 1998, **116**:1307-1313.
  50. Leustek T: **Sulfate metabolism.** In *The Arabidopsis book* 2002:171-180 [<http://www.aspb.org/publications/arabidopsis/>]. American Society of Plant Biologist
  51. Neuhierl B, Bock A: **On the mechanism of selenium tolerance in selenium-accumulating plants: Purification and characterization of a specific selenocysteine methyltransferase from cultured cells of *Astragalus bisulcatus*.** *Eur J Biochem* 1996, **239**:235-238.
  52. Chow CM, Nigam SN, McConnell WB: **Biosynthesis of Se-methylselenocysteine and S-methylcysteine in *Astragalus bisulcatus*: effect of selenium and sulfur concentrations in the growth medium.** *Phytochemistry* 1971, **10**:2693-2698.
  53. Fukushima S, Takada N, Hori T, Min W, Wanibuchi H, Yamamoto S: **Suppression of chemical carcinogenesis by water-soluble organosulfur compounds.** *J Nutr* 2001, **131**:1049S-1053S.
  54. Schardl C, Byrd AD, Benzion G, Altschuler MA, Hildebrand DF, Hunt AG: **Design and construction of a versatile system for the expression of foreign genes in plants.** *Gene* 1987, **61**:1-11.
  55. An G, Watson BG, Stachel S, Gordon MP, Nester EW: **New cloning vehicles for transformation of higher plants.** *EMBO J* 1985, **4**:277-284.
  56. Clough SJ, Bent AF: **Floral dip: a simplified method for Agrobacterium-mediated transformation of *Arabidopsis thaliana*.** *Plant J* 1998, **16**:735-43.
  57. Lahner B, Gong J, Mahmoudian M, Smith EL, Abid KB, Rogers EE, Guerinot ML, Harper JF, Ward JM, McIntyre L, Schroeder JI, Salt DE: **Genomic scale profiling of nutrient and trace elements in *Arabidopsis thaliana*.** *Nature Biotech* 2003, **21**:1215-1221.

58. Rhodes D, Deal L, Haworth P, Jamieson GC, Reuter CC, Ericson MC: **Amino acid metabolism of Lemna minor L1 responses to methionine sulfoximine.** *Plant Physiol* 1986, **82**:1057-1062.
59. Mackenzie SL, Tenaschuk D, Fortier G: **Analysis of amino acids by gas-liquid chromatography as tert butyldimethylsilyl derivatives preparation of derivatives in a single reaction.** *J Chrom* 1987, **387**:241-254.

Publish with **BioMed Central** and every scientist can read your work free of charge

*"BioMed Central will be the most significant development for disseminating the results of biomedical research in our lifetime."*

Sir Paul Nurse, Cancer Research UK

Your research papers will be:

- available free of charge to the entire biomedical community
- peer reviewed and published immediately upon acceptance
- cited in PubMed and archived on PubMed Central
- yours — you keep the copyright

Submit your manuscript here:  
[http://www.biomedcentral.com/info/publishing\\_adv.asp](http://www.biomedcentral.com/info/publishing_adv.asp)

