



The D E N T I T I O N and P A L A T E

of the

A U S T R A L I A N A B O R I G I N A L.

from observations on the skull.

A Study

in

Physical Anthropology and Dental Pathology.

By T. D. Campbell B.D.S. (Adel.)

Submitted as a Thesis for the degree of Doctor
of Dental Science of the University of Adelaide.

July, 1923.

NOTE: Several Figures
are missing from the print and digital copies of the thesis





Fig. 19



Fig. 20

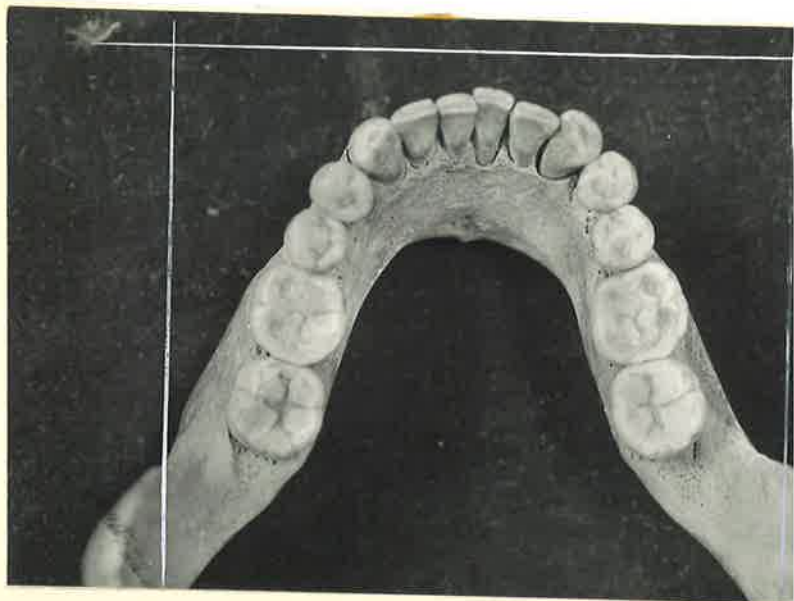
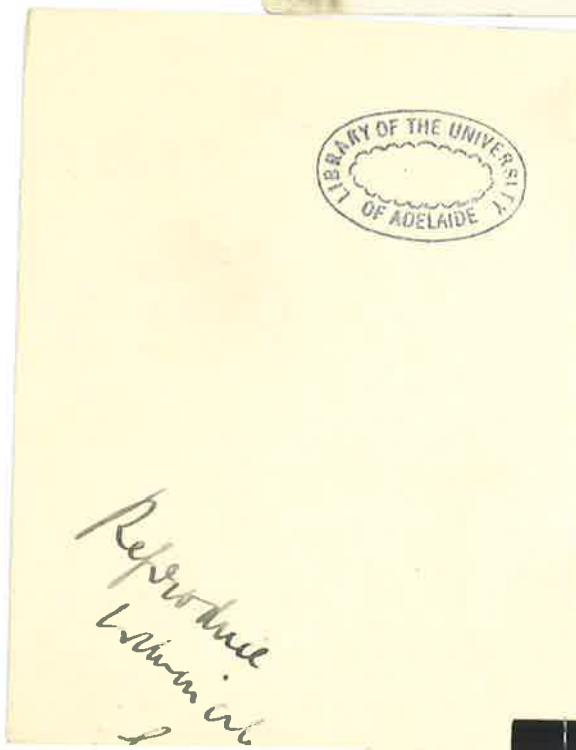


FIG. 23 21

Line 1



Reference
Same fig
& number



Fig. 24 22

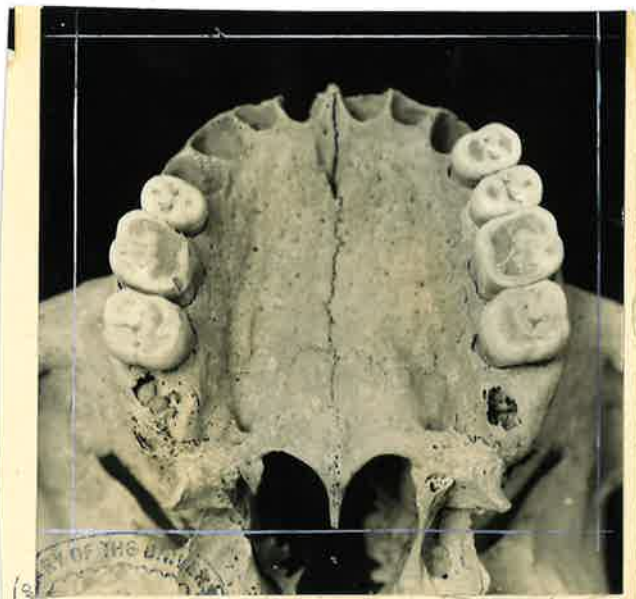


Fig. 25 23

for
Cochran's
page



Fig. 26.24

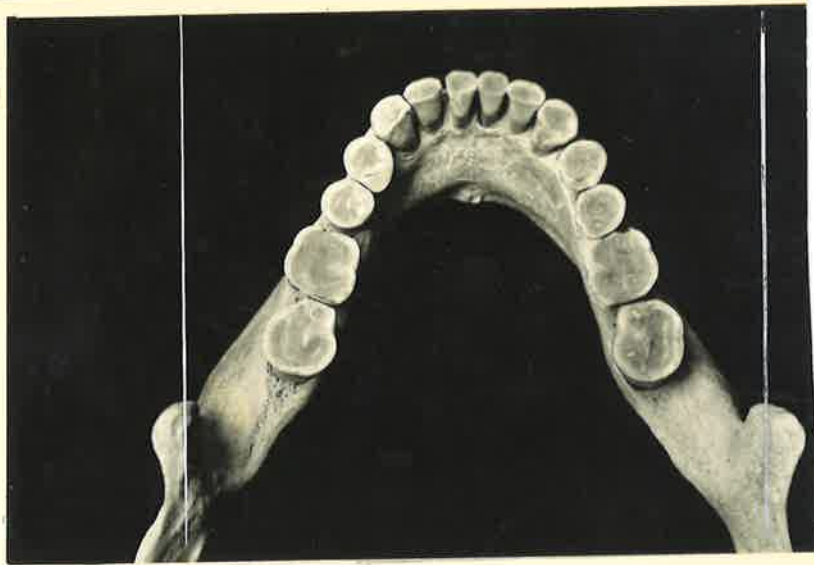


Fig. 27.25 Absent third molars.

Reproduced
within whole
line



Fig. 28²⁶ absent third molars.

*(Reproduce for
size &
arrange cards)*



Fig. 29²⁷ absent third molars.

LIBRARY OF THE MUSEUM
OF ADELAIDE



Fig. 30-28

LIBRARY OF THE
MUSEUM OF ADELAIDE



Fig. 31-29



Fig. ~~33~~ 31

de Smith



Fig. 34 32



FIG. 37 35



✓
Really becomes
36

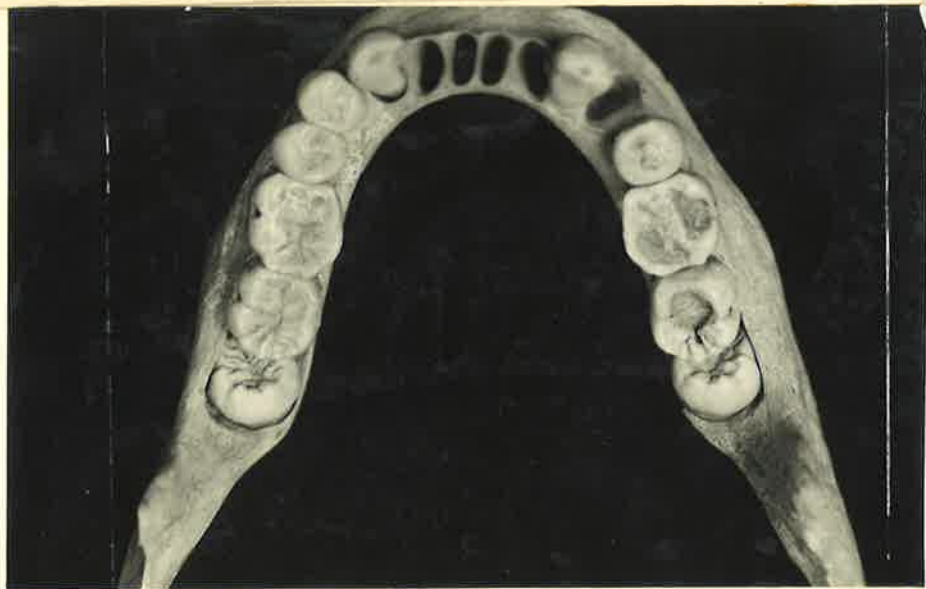


Figure 38 36

Becomes 37





Figure 40-38

Railley beavers 35

Variations in Position.



Fig. 41-39

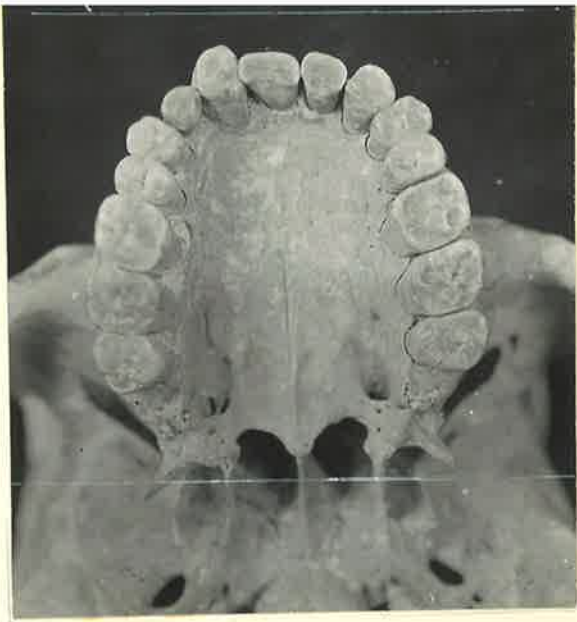


Fig. 42. 40



Fig. 44. 41





Fig. 52 ~~49~~

47.



~~47~~ 50

48



Fig. 53 ~~50~~



Fig. 51 ~~48~~

49



Fig. 54 ~~51~~





Moose
56

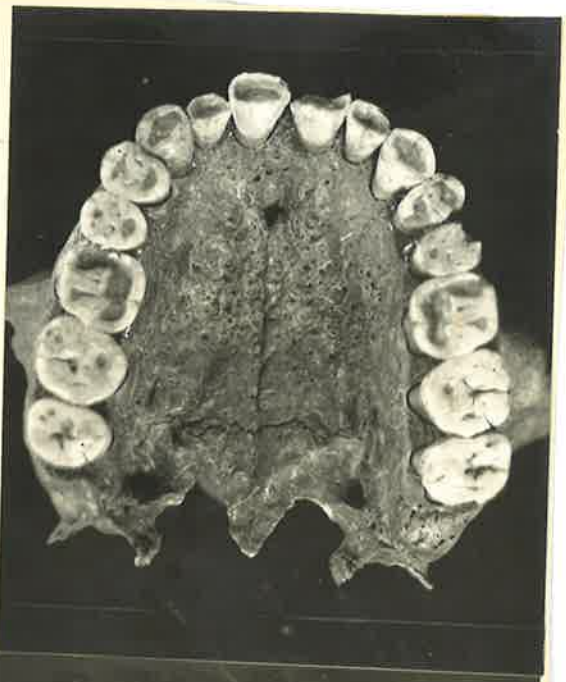


Fig. 60
56

56 - 57 } 4 blocks 89
56 - 57 }

LIBRARY OF THE UNIVERSITY
OF ADELAIDE

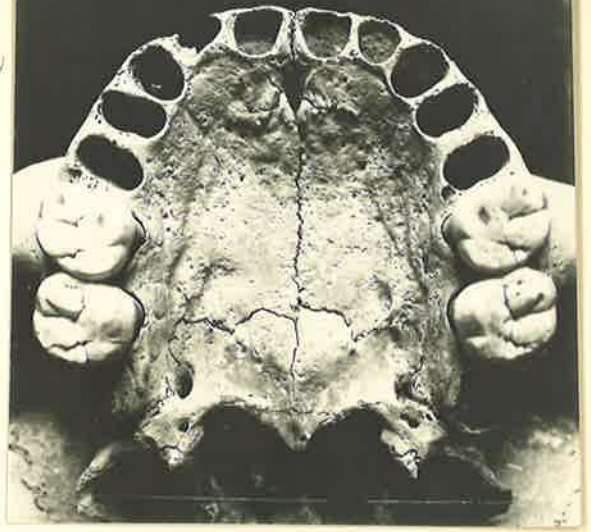


FIG. 62.
58

LIBRARY OF THE UNIVERSITY
OF ADELAIDE

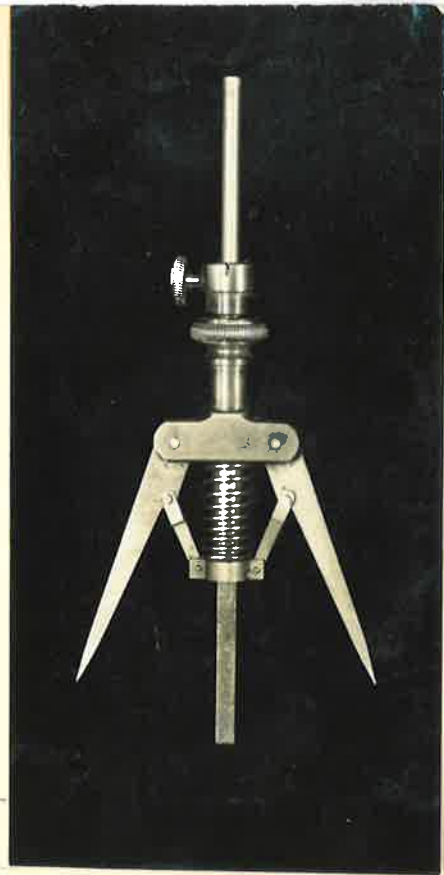


FIG. 63
59

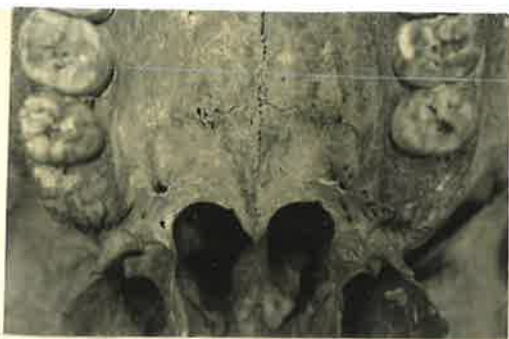


Fig. ~~66~~
60



Fig. 67
61

these
same blocks

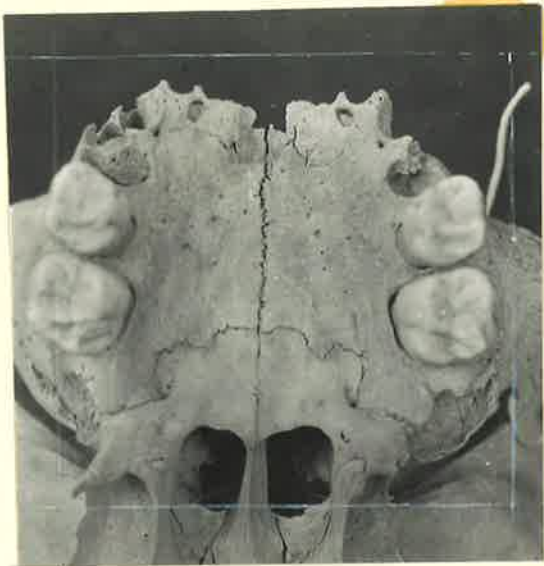


Fig. 7265
Young.

Keep these together



Fig. 7164
Infant.

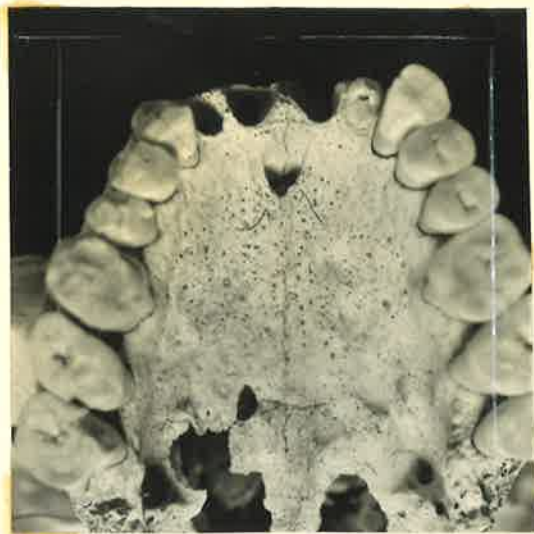


Fig. 74⁶⁷

Adult.



of intermaxillary sutures
of varying ages.

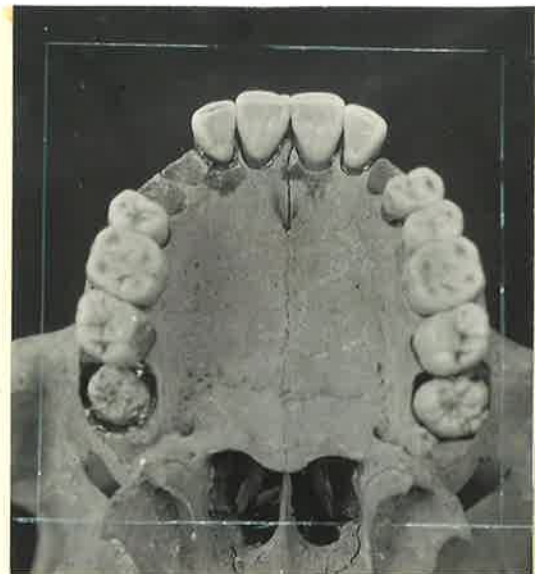


Fig. 75⁶

Young Adult.

Incomplete fusion

In specimens



Fig. 93 90

Deciduous molars

[with buccal roots
thinned and
lingual roots
absorbed away.]



Figure 94 91

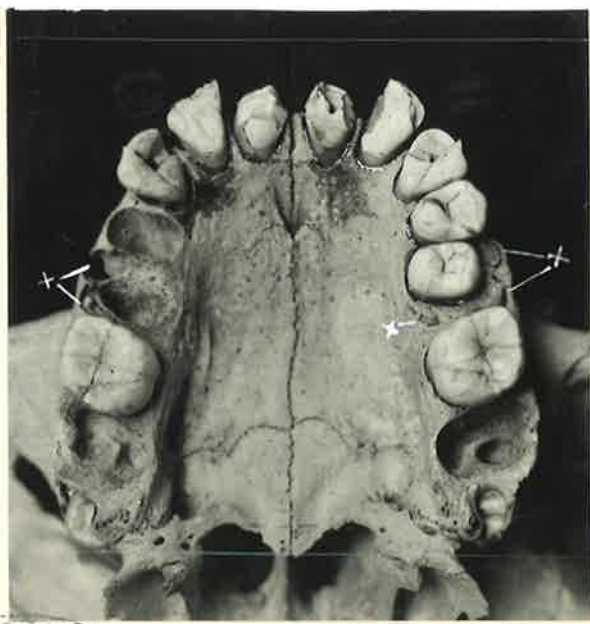


Figure 95 92



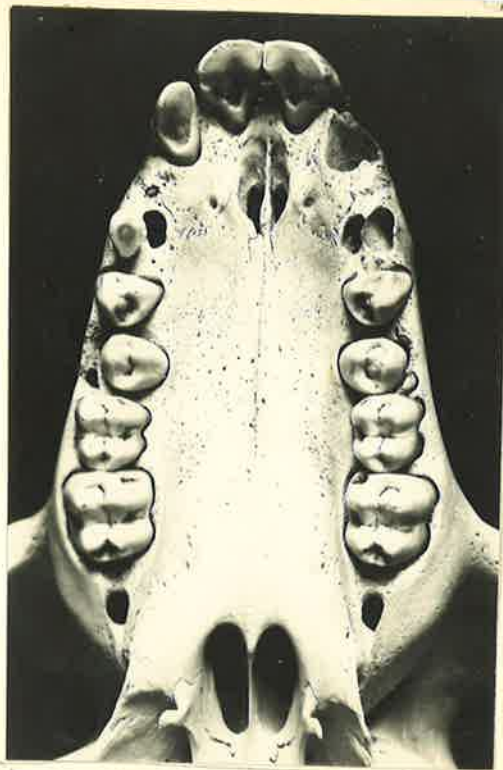


Fig. 101 *98*

94



Figure *96* *93*



"Accessory Dental Masses."

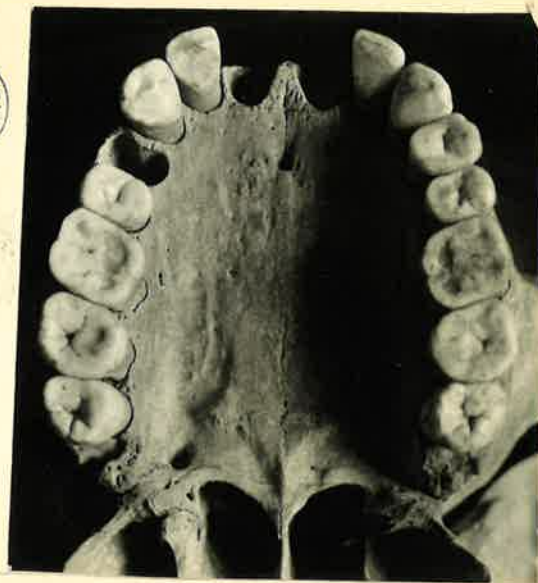


Fig. 9794

95



Fig. 9893

96



Fig. 999697



Fig. 100 9798

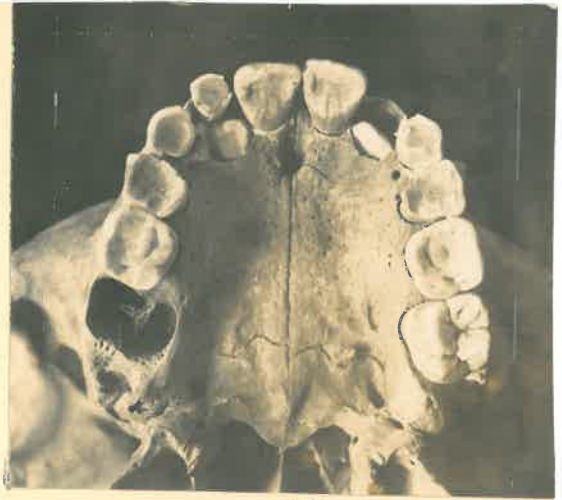


Fig. 102

99



Fig. 103

100





Fig. 105 101

(Looking linguo-labially)



Fig. 103 109

103



Fig. 106 102

(Looking labio-ling.)



Fig. 107 103

104

LIBRARY OF THE UNIVERSITY
OF ADELAIDE



Fig. 108 104
105



LIBRARY OF THE UNIVERSITY
OF ADELAIDE

Fig. 109 105
106

LIBRARY OF THE UNIVE
OF ADELAIDE



Fig. 110 106
107



Fig. 112

108

109



Fig. 111

107

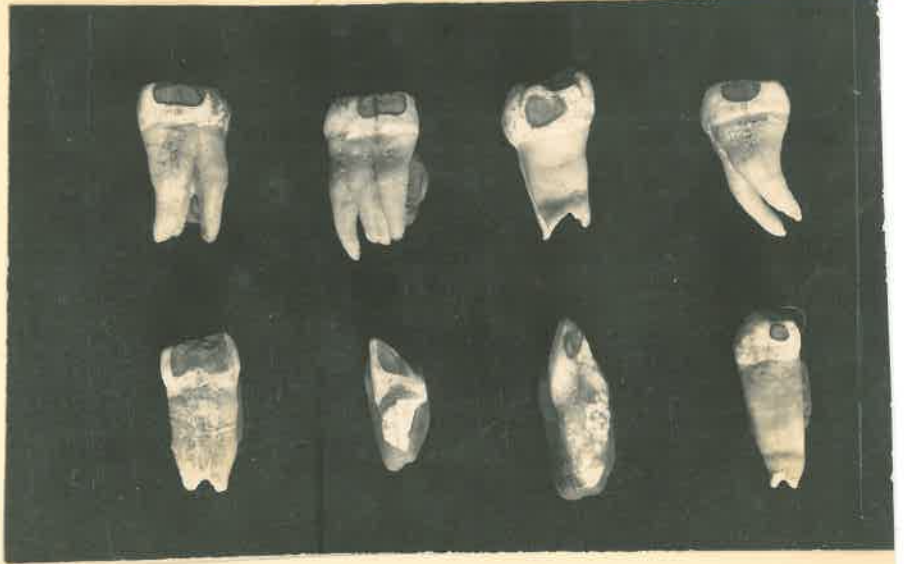


Fig. 115/114 110



(Worn areas have been darkened)



Fig. 116 ~~112~~

112

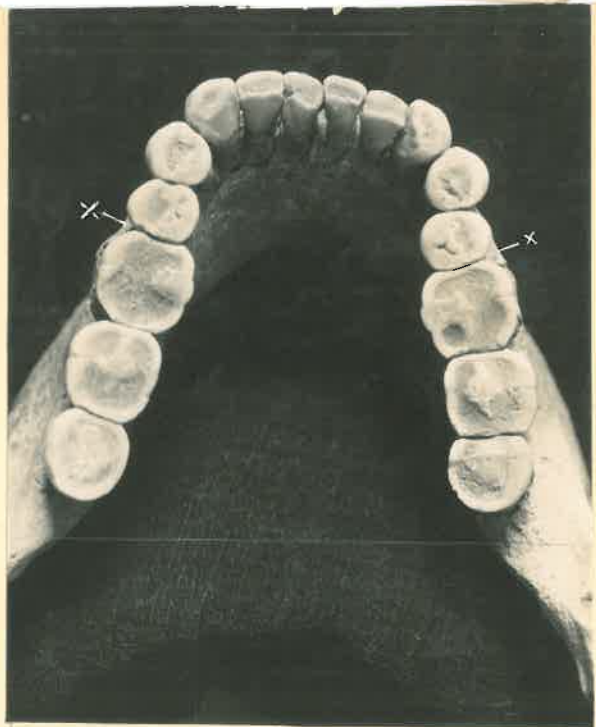


Fig. 114 ~~110~~

111



LIBRARY OF THE UNIVERSITY
OF ADELAIDE



Fig. 117 ~~114~~

113



LIBRARY OF THE UNIVERSITY
OF ADELAIDE

Fig. 118 ~~115~~

114



UNIVERSITY OF DELAWARE LIBRARY

Fig. 121 115



UNIVERSITY OF DELAWARE LIBRARY

Fig. 122 116



UNIVERSITY OF DELAWARE LIBRARY

Fig. 123 117



124. 120

118



Fig. 119

~~118~~

119

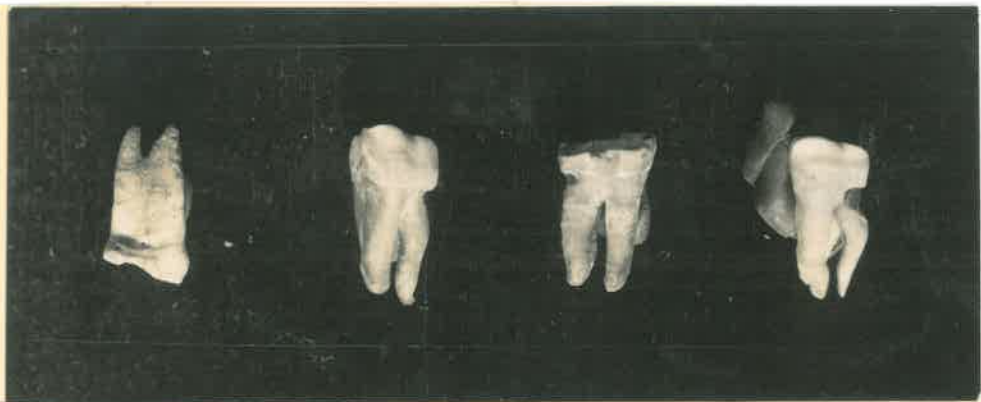


Fig. 120 ~~116~~

120

LIBRARY OF THE UNIVERSITY
OF ADELAIDE

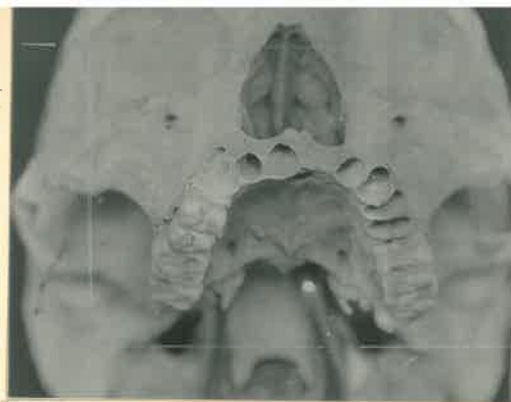
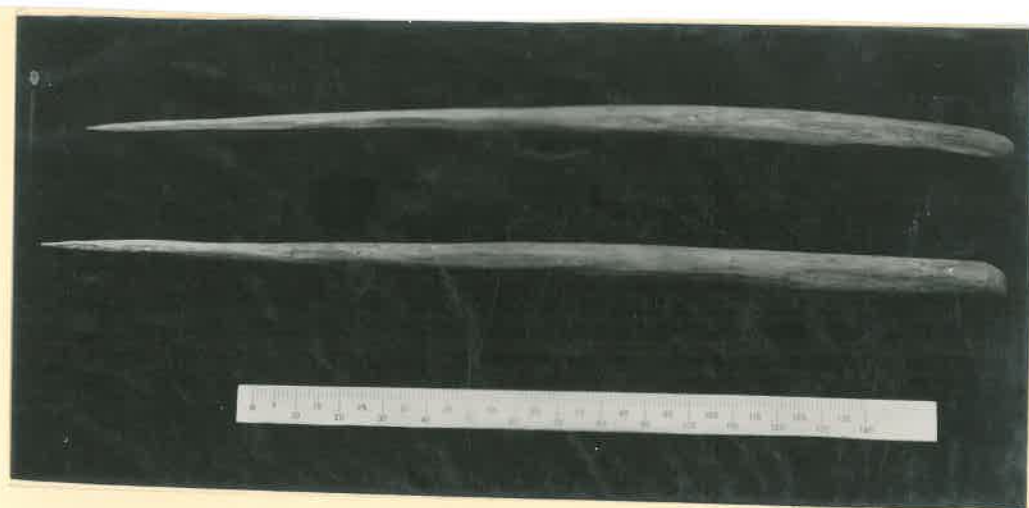


Fig. 126
121



LIBRARY OF THE UNIVERSITY
OF ADELAIDE

Fig. 127
122



LIBRARY OF THE UNIVERSITY
OF ADELAIDE

Fig. 131 123

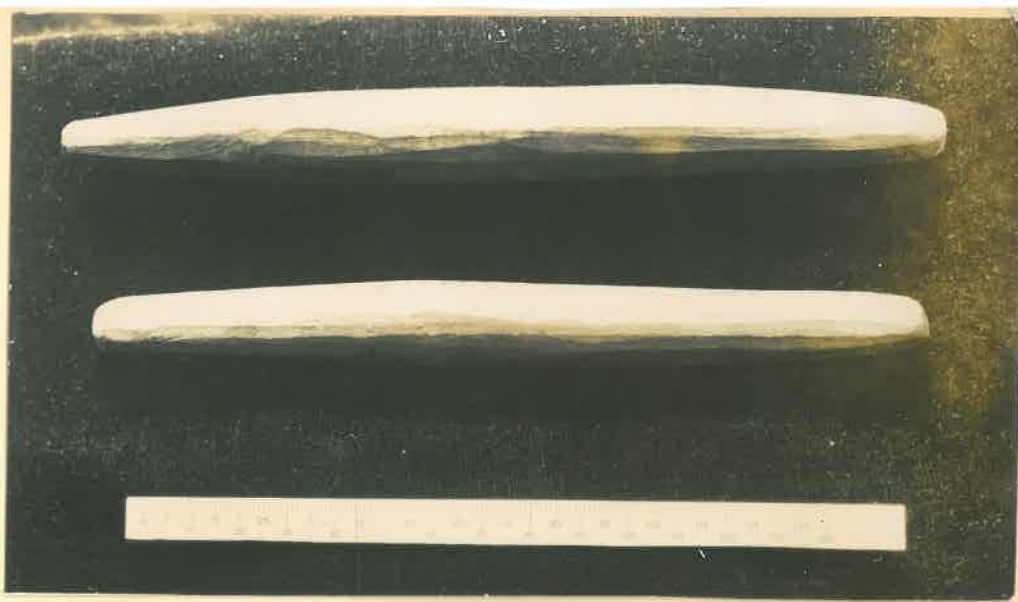


Fig. 132. 124

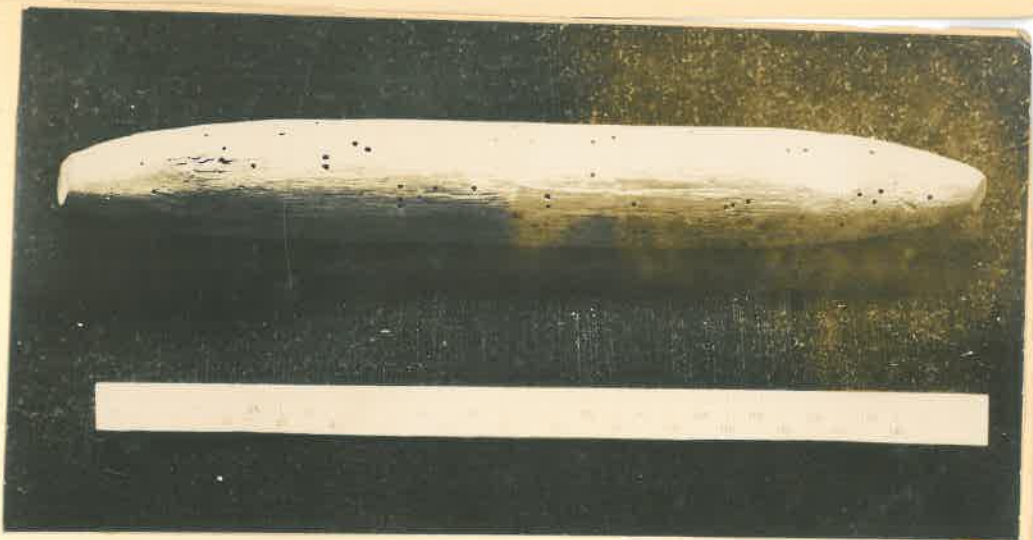


Fig. 133. 125



Fig. 135 (From Spencer and Gillen)

126



Fig. 139 (From Spencer and Gillen)

130

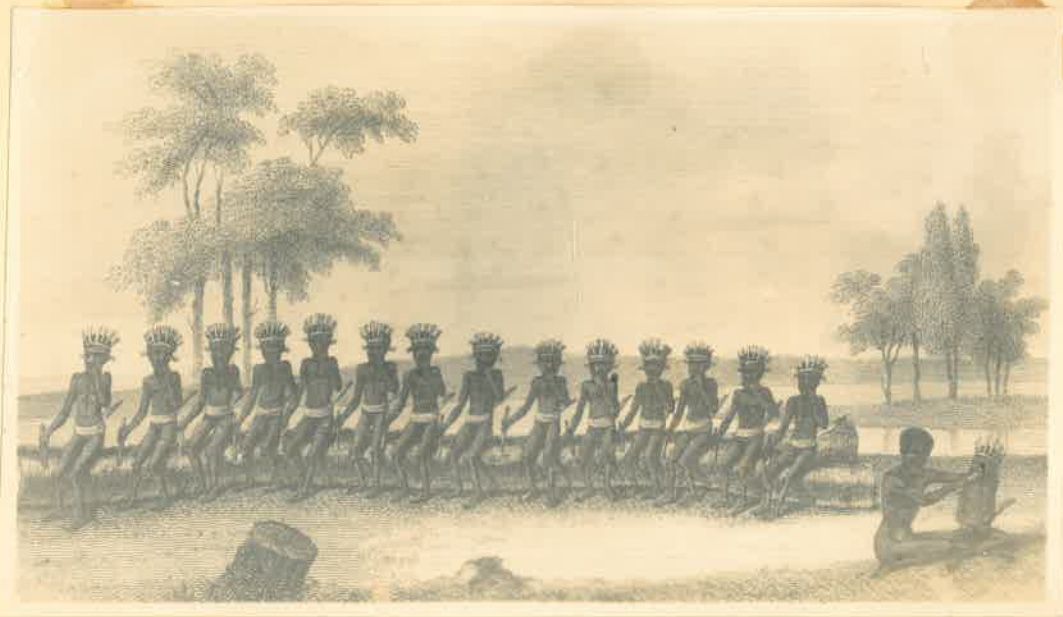


Fig. 140
(From Collins) ~~131~~



Fig. 141 132



LIBRARY OF THE U
OF ADEL



Fig. ~~153~~

144