

Appendix A

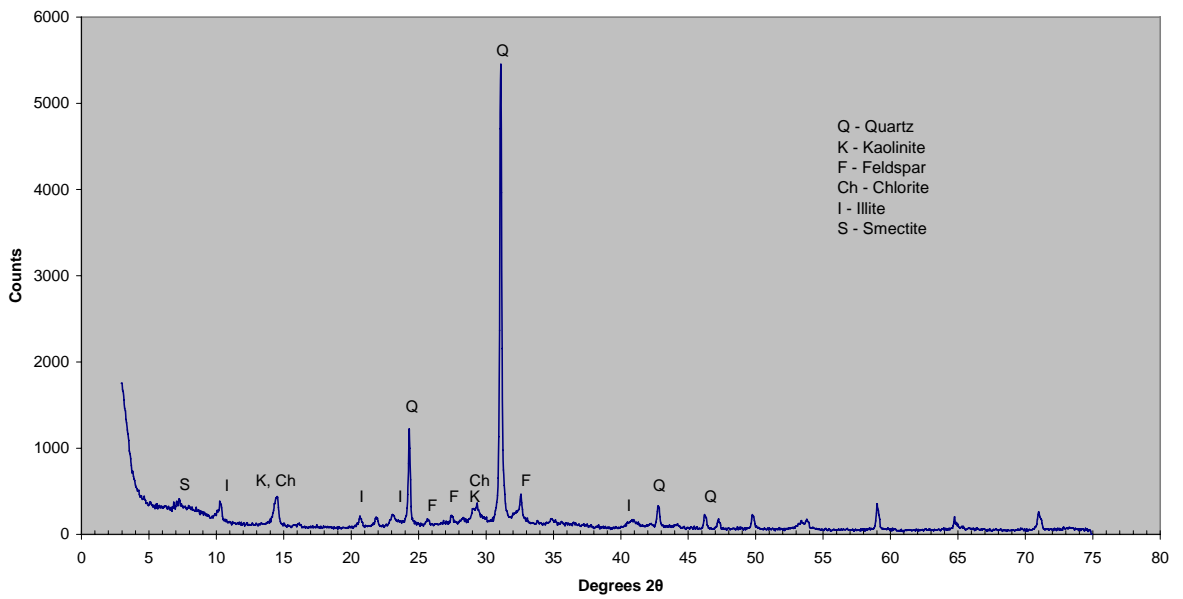
XRD DATA

Appendix A - Table of Contents

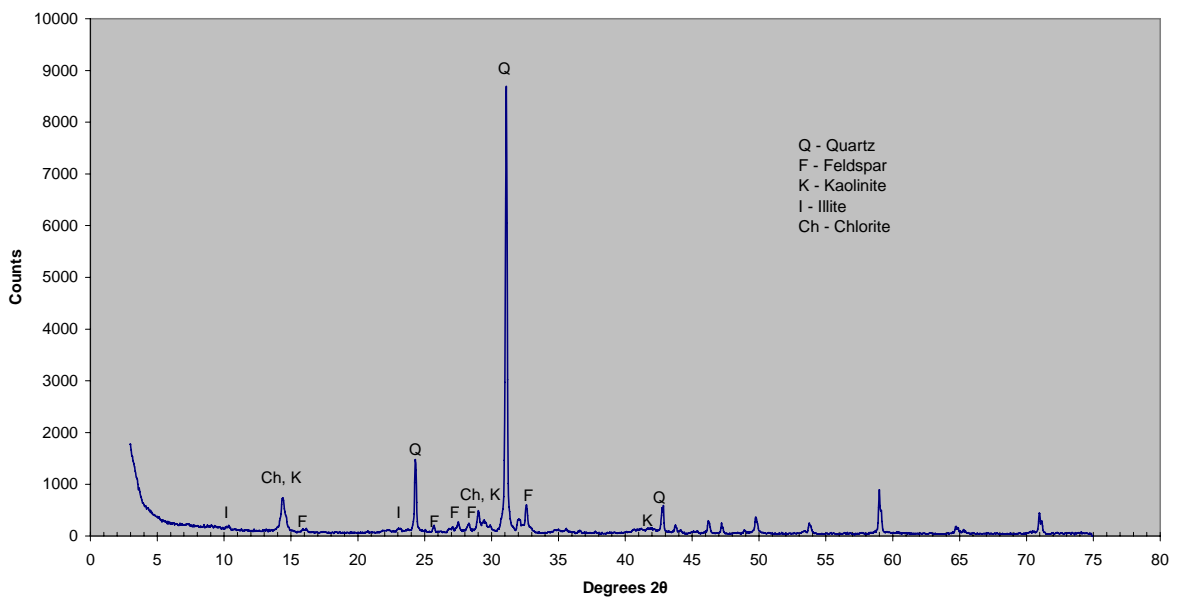
Windermere Sandstone Member – Diamond Swamp-1 Cuttings.....	129
Windermere Sandstone Member – Mocamboro-11 Core	129
Eumeralla Fm Unit VI – Mocamboro-11 Core	130
Eumeralla Fm Unit VI – Mocamboro-11 Core	130
Eumeralla Fm Unit VI – St Clair-1 Sidewall core.....	131
Eumeralla Fm Unit V – Crayfish-1A Core.....	131
Eumeralla Fm Unit V – Diamond Swamp-1 Cuttings.....	132
Eumeralla Fm Unit V – Geltwood Beach-1 Core.....	132
Eumeralla Fm Unit V – Kalangadoo-1 Core.....	133
Eumeralla Fm Unit V – Lake Eliza-1 Cuttings.....	133
Eumeralla Fm Unit V – Mocamboro-11 Core	134
Eumeralla Fm Unit V – Mocamboro-11 Cuttings.....	134
Eumeralla Fm Unit V – Mocamboro-11 Core.....	135
Eumeralla Fm Unit V – Mocamboro-11 Core	135
Eumeralla Fm Unit V – Reedy Creek-1 Sidewall core.....	136
Eumeralla Fm Unit V – Reedy Creek-1 Sidewall core.....	136
Eumeralla Fm Unit V – Reedy Creek-1 Sidewall core.....	137
Eumeralla Fm Unit V – Sophia Jane-1 Cuttings.....	137
Eumeralla Fm Unit V – St Clair-1 Sidewall core.....	138
Eumeralla Fm Unit V – Trumpet-1 Cuttings.....	138
Eumeralla Fm Unit IV – Geltwood Beach-1 Core.....	139
Eumeralla Fm Unit IV – Lake Eliza-1 Cuttings.....	139
Eumeralla Fm Unit IV – Mocamboro-11 Core	140
Eumeralla Fm Unit IV – Troas-1 Cuttings.....	140

Eumeralla Fm Unit III – Crayfish-1A Core	141
Eumeralla Fm Unit III – Mocamboro-11 Core	141
Eumeralla Fm Unit III – Trumpet-1 Cuttings.....	142
Eumeralla Fm Unit II – Crayfish-1A Core	142
Eumeralla Fm Unit II – Kalangadoo-1 Core	143
Eumeralla Fm Unit II – Kalangadoo-1 Core.....	143
Eumeralla Fm Unit II – Troas-1 Cuttings.....	144

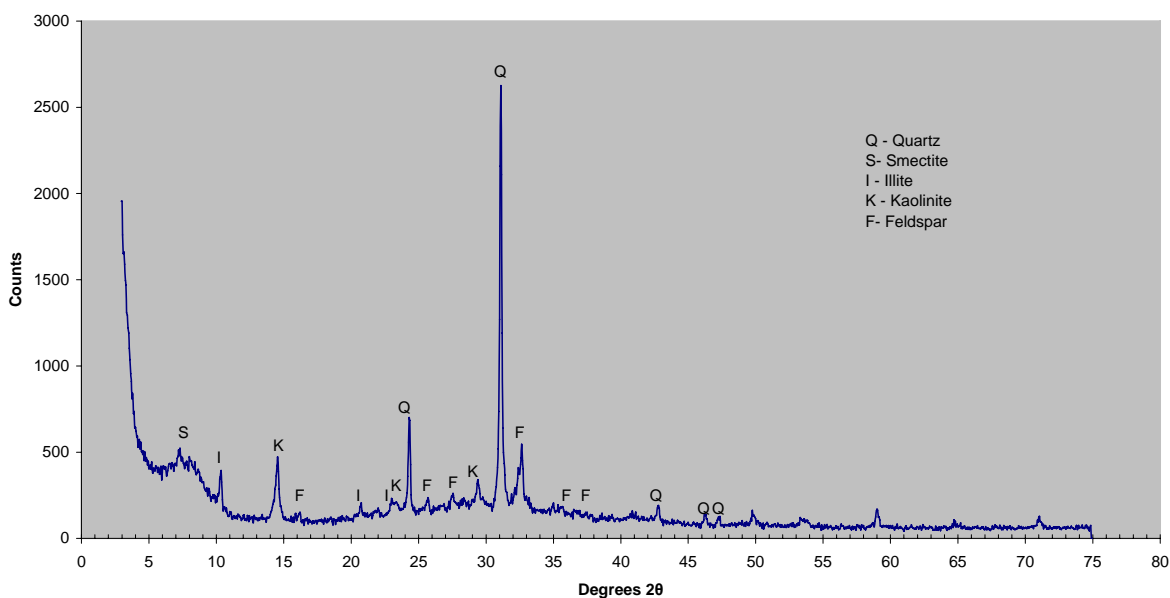
Diamond Swamp-1 Cuttings 1399-1402m
Windermere Sandstone Member



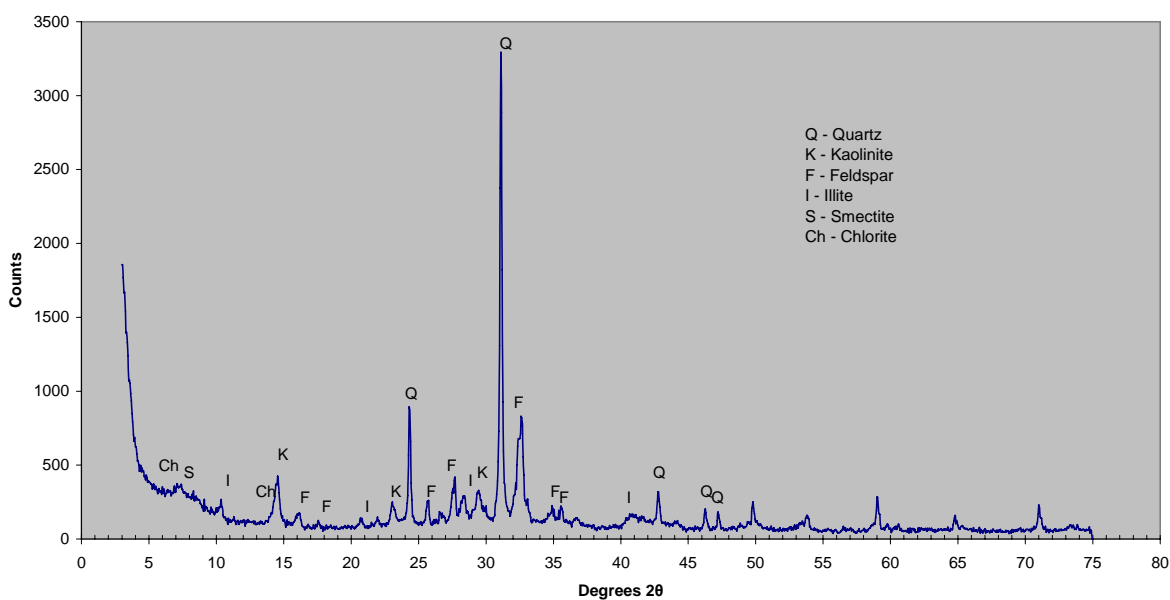
Mocamboro-11 Core 980.95m
Windermere Sandstone Member



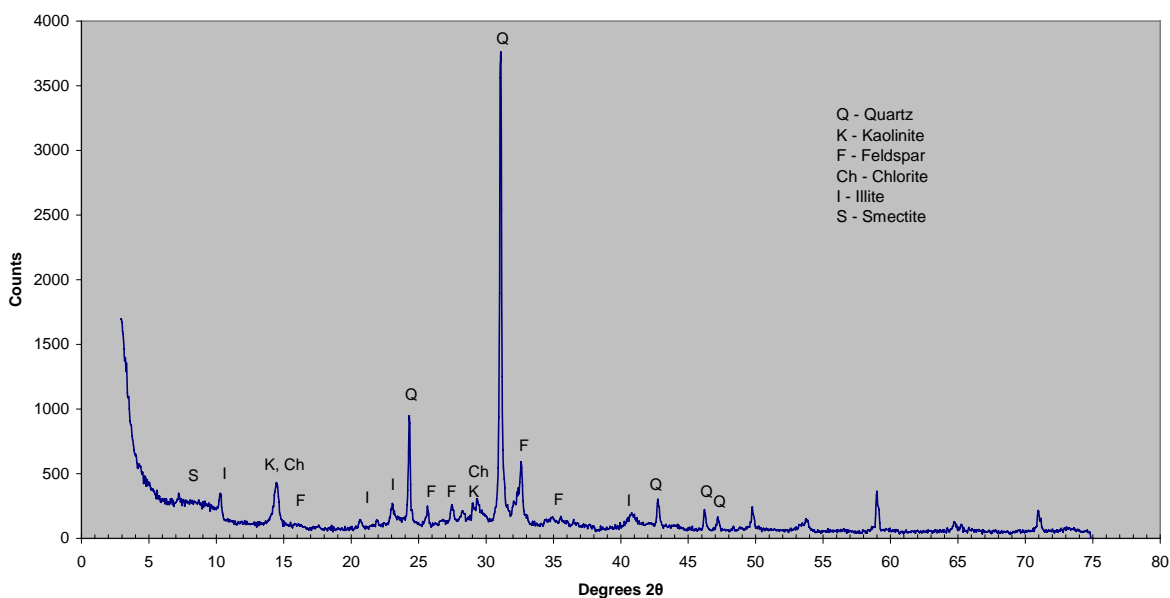
Mocamboro-11 Core 943.2m
Unit VI - Massive claystone



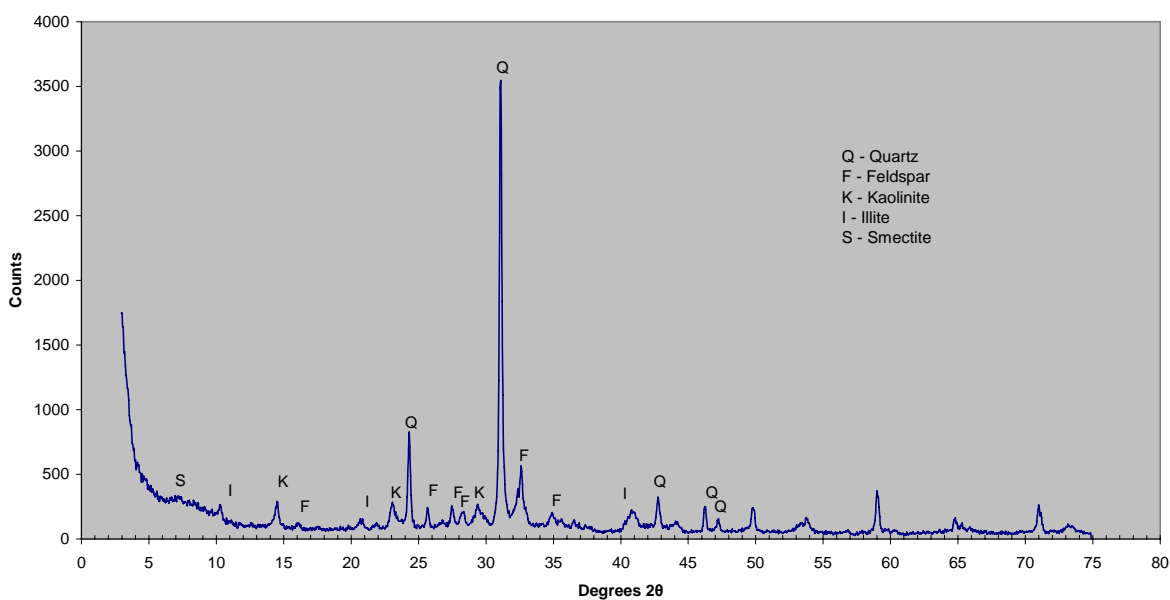
Mocamboro-11 Core 907.2m
Unit VI - Claystone with siltstone interbeds



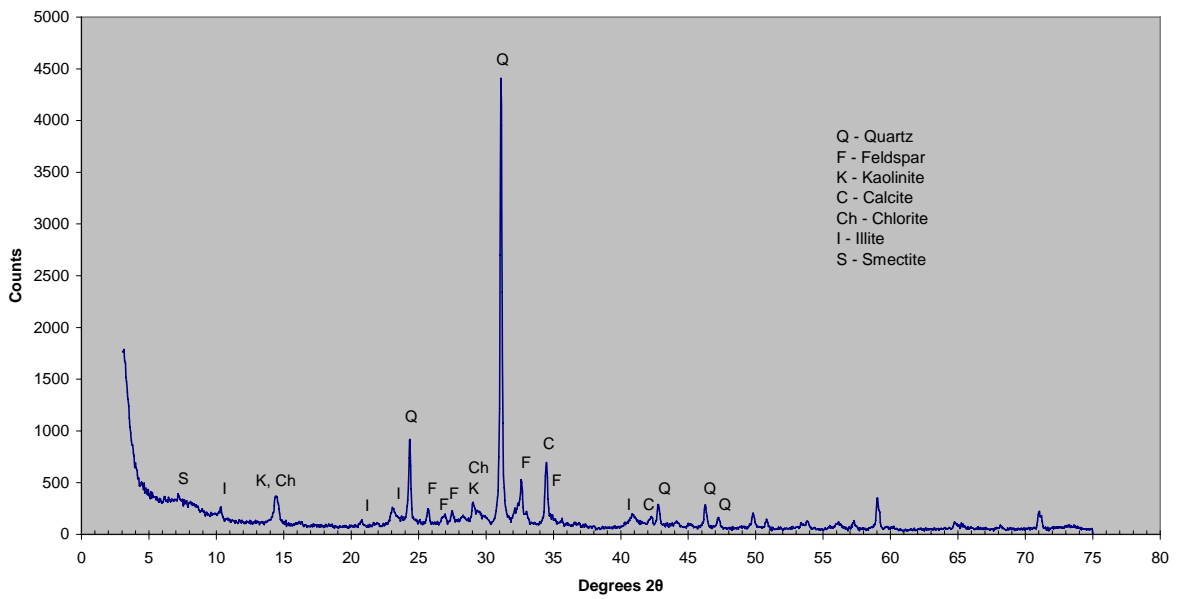
St Clair-1 Sidewall core 1950m
Unit VI - Fine siltstone



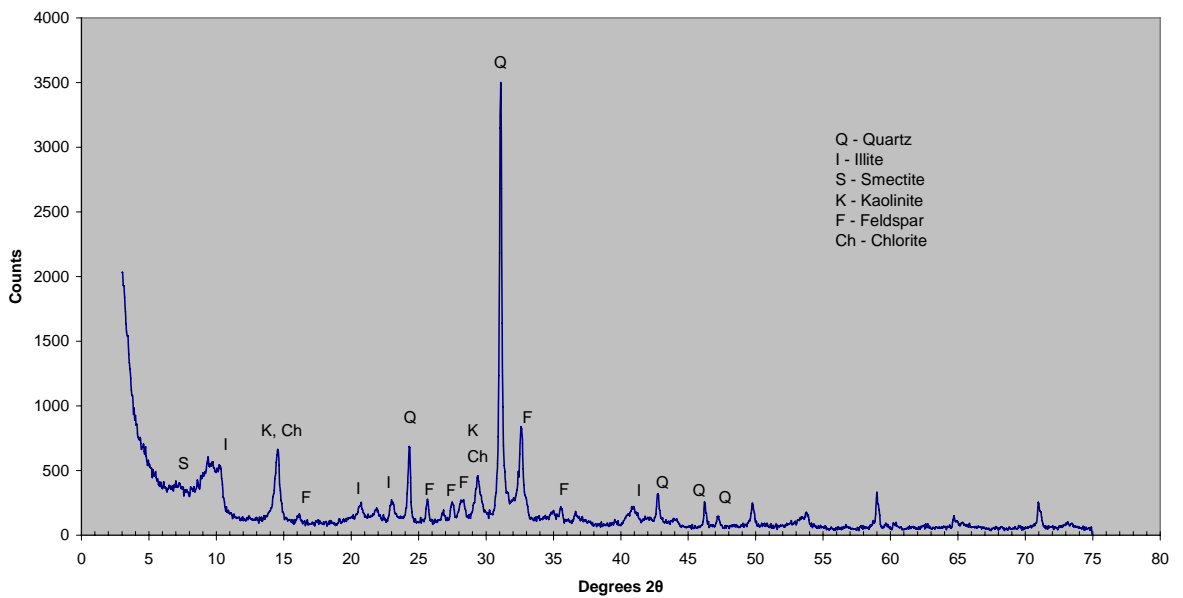
Crayfish-1A Core 1528.75m
Unit V - Carbonaceous claystone



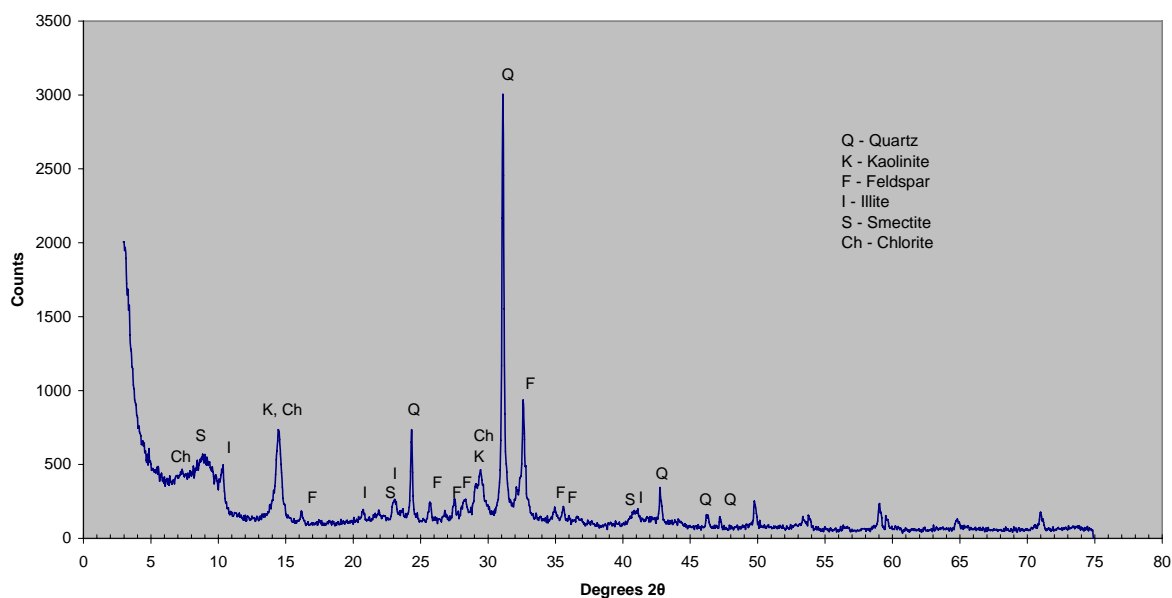
Diamond Swamp-1 Cuttings 1344-1350m
Unit V - Calcareous siltstone



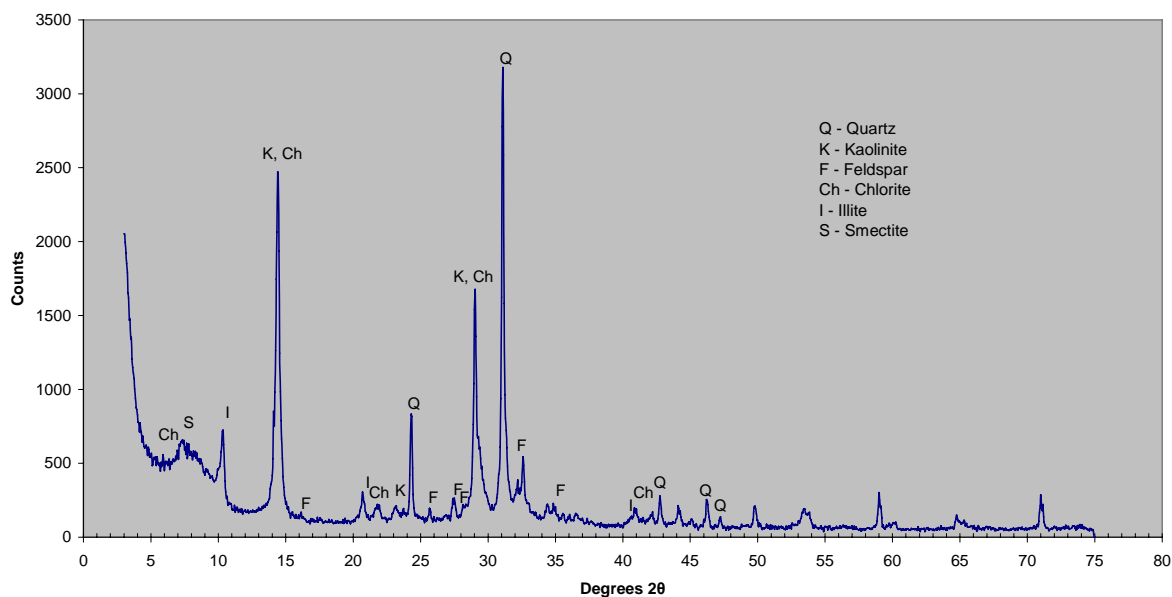
Geltwood Beach-1 Core 3725.1m
Unit V - Carbonaceous siltstone



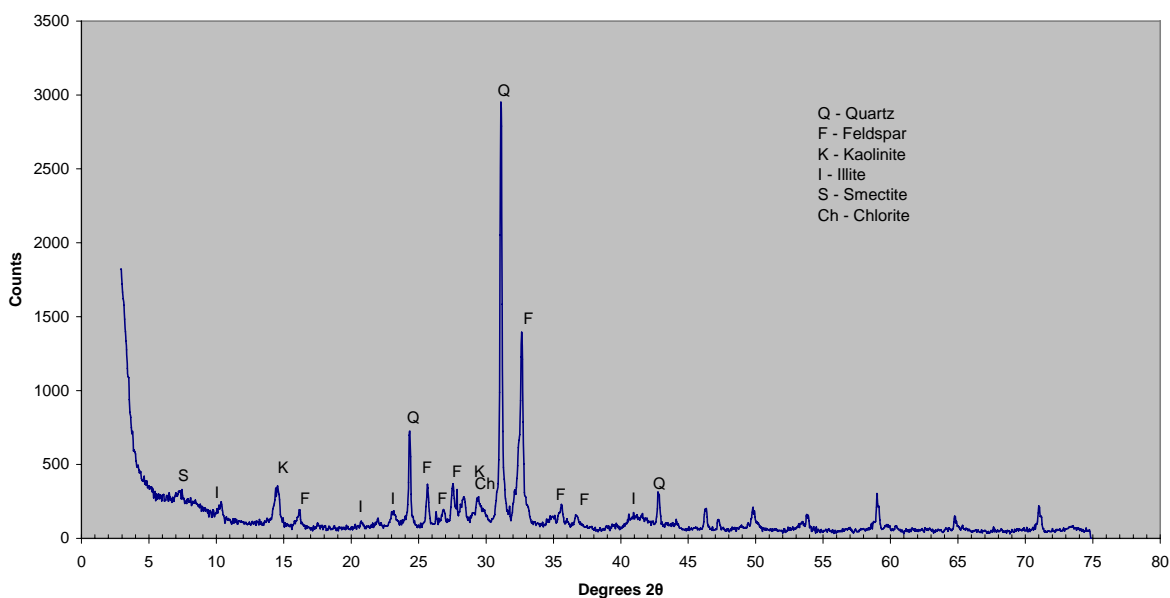
**Kalangadoo-1 Core 1869.3m
Unit V - Carbonaceous siltstone**



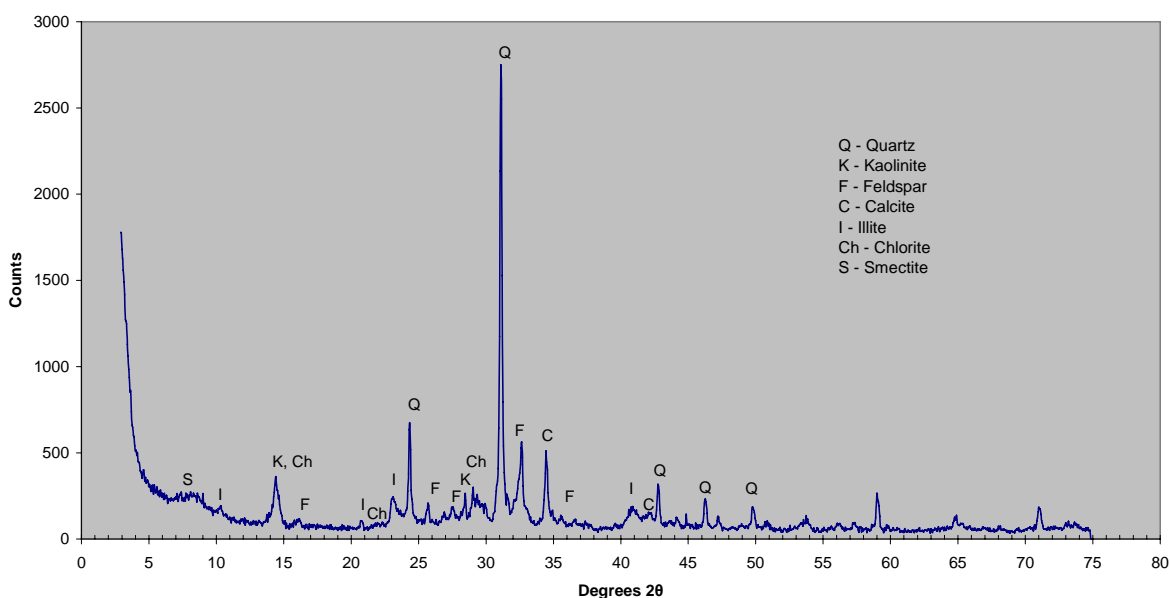
**Lake Eliza-1 Cuttings 1060-1066m
Unit V - Siltstone**



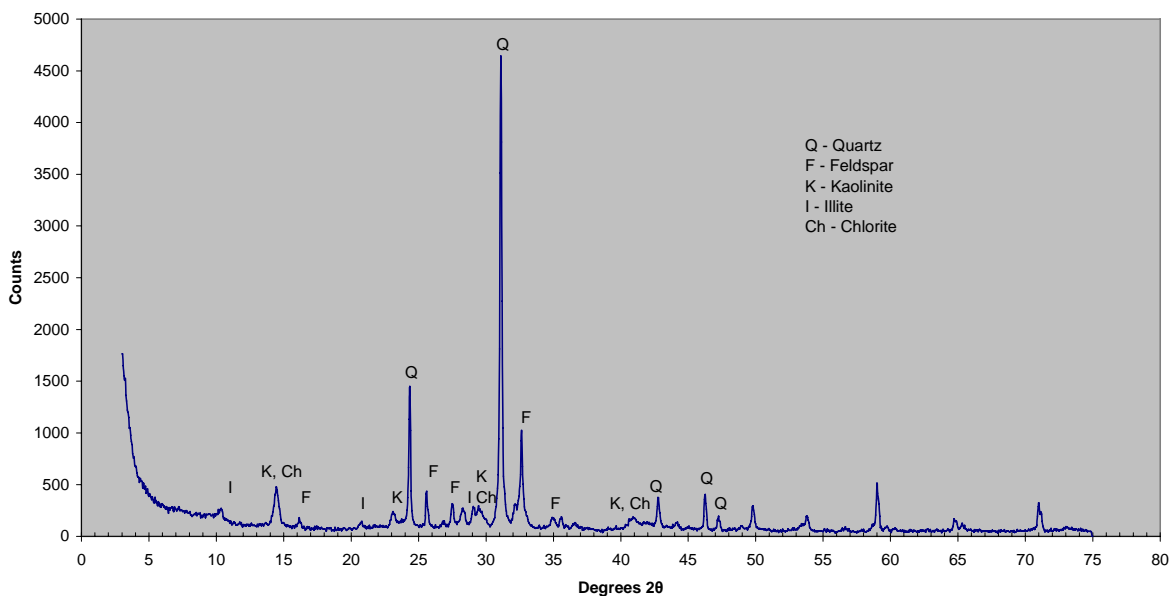
Mocamboro-11 Core 871.35m
Unit V - Siltstone with claystone interbeds



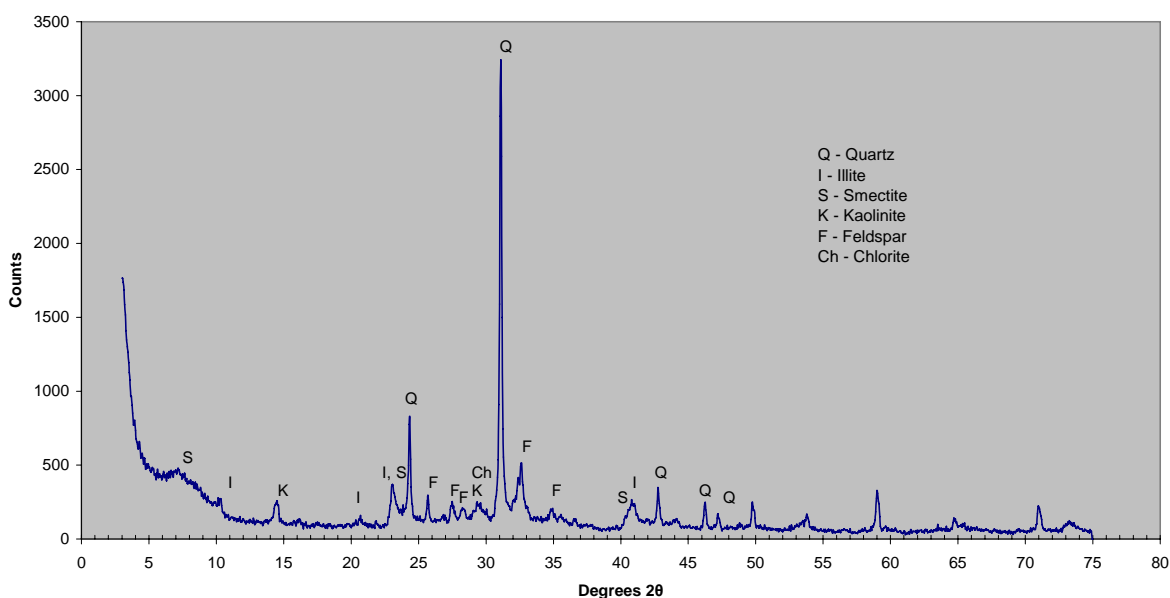
Mocamboro-11 Cuttings 774-777m
Unit V - Carbonaceous siltstone



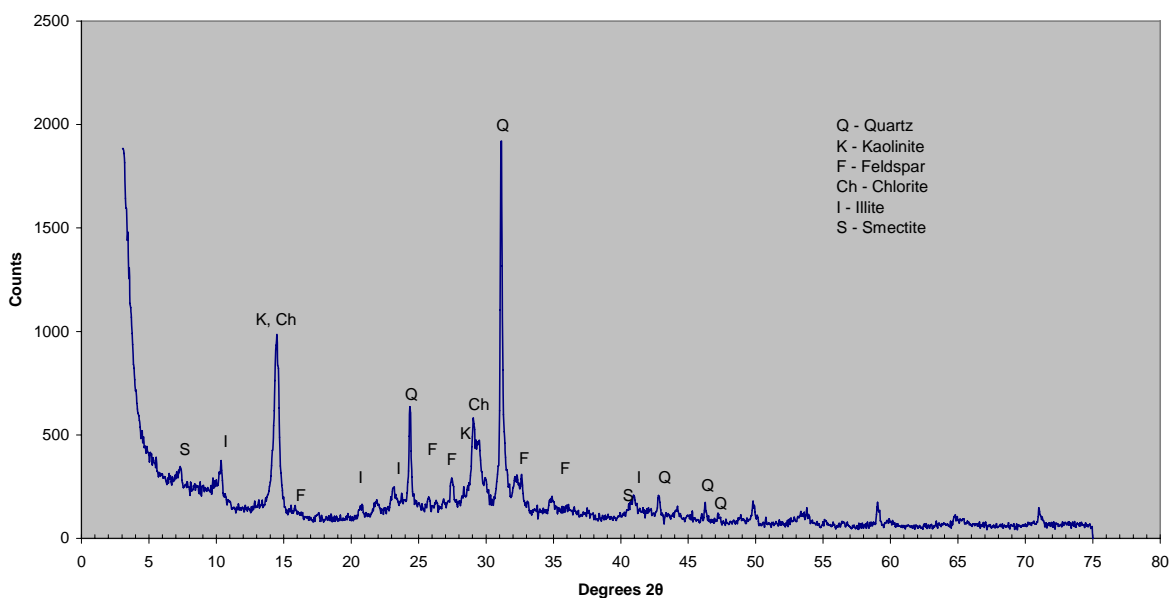
Mocamboro-11 Core 744.69m
Unit V - Coarse Siltstone



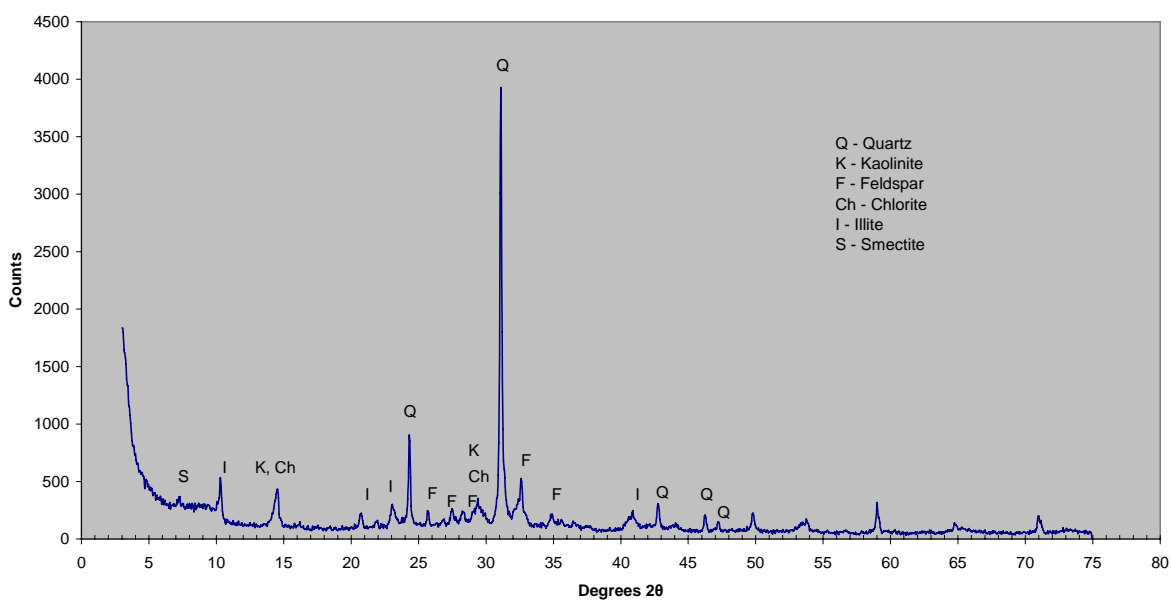
Mocamboro-11 Core 706m
Unit V - Black carbonaceous claystone



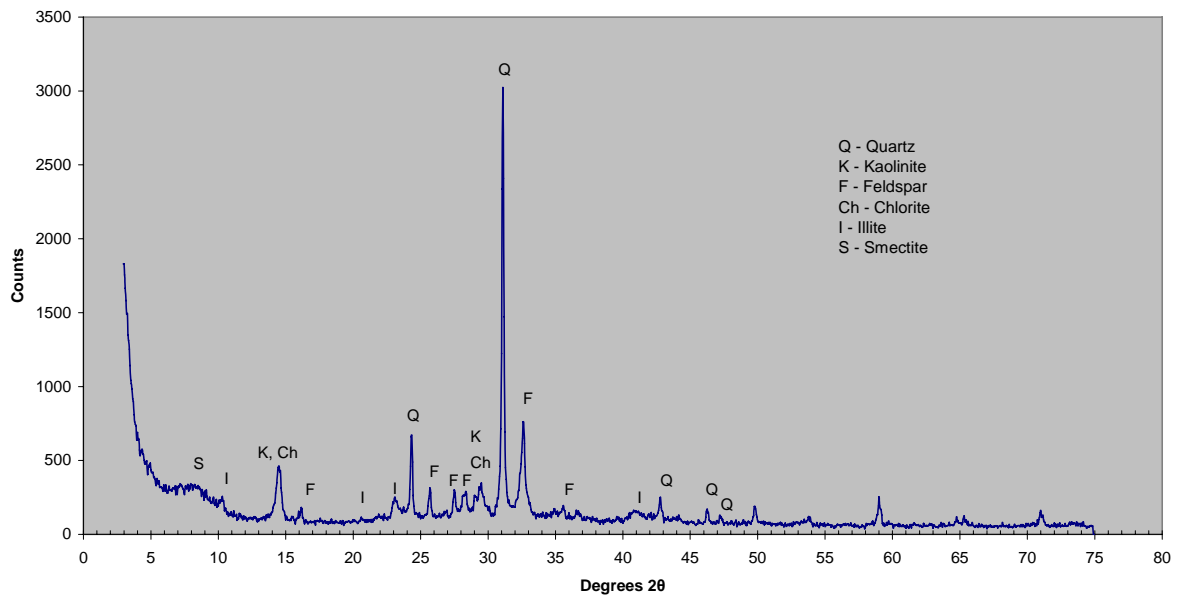
Reedy Creek-1 Sidewall core 1701m
Unit V - Silty claystone



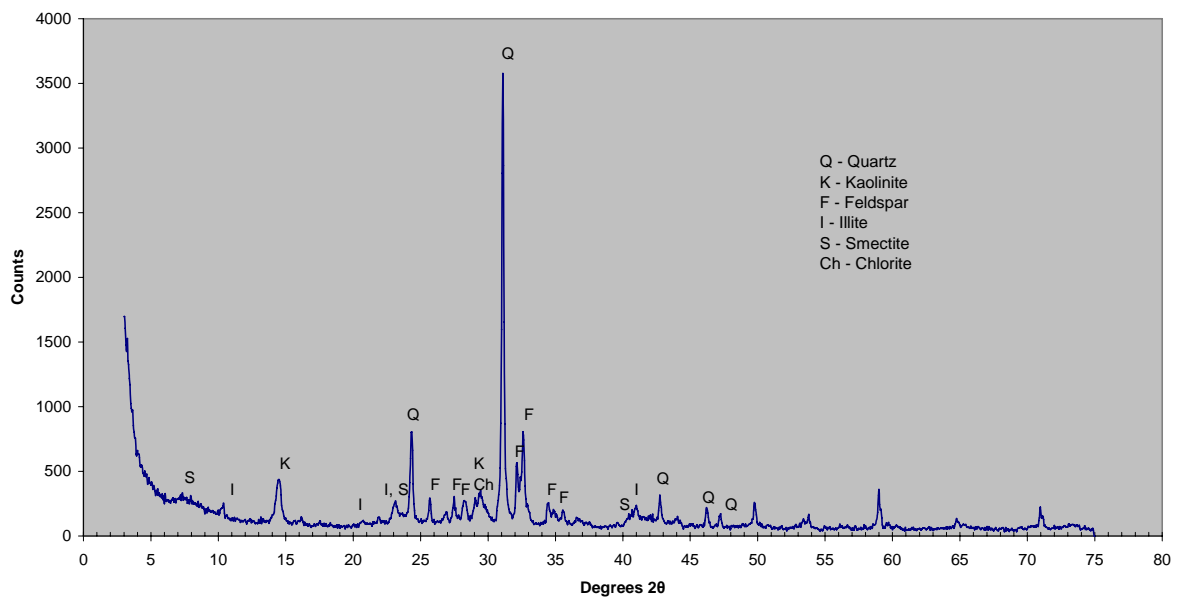
Reedy Creek-1 Sidewall core 1678.5m
Unit V - Carbonaceous silty claystone



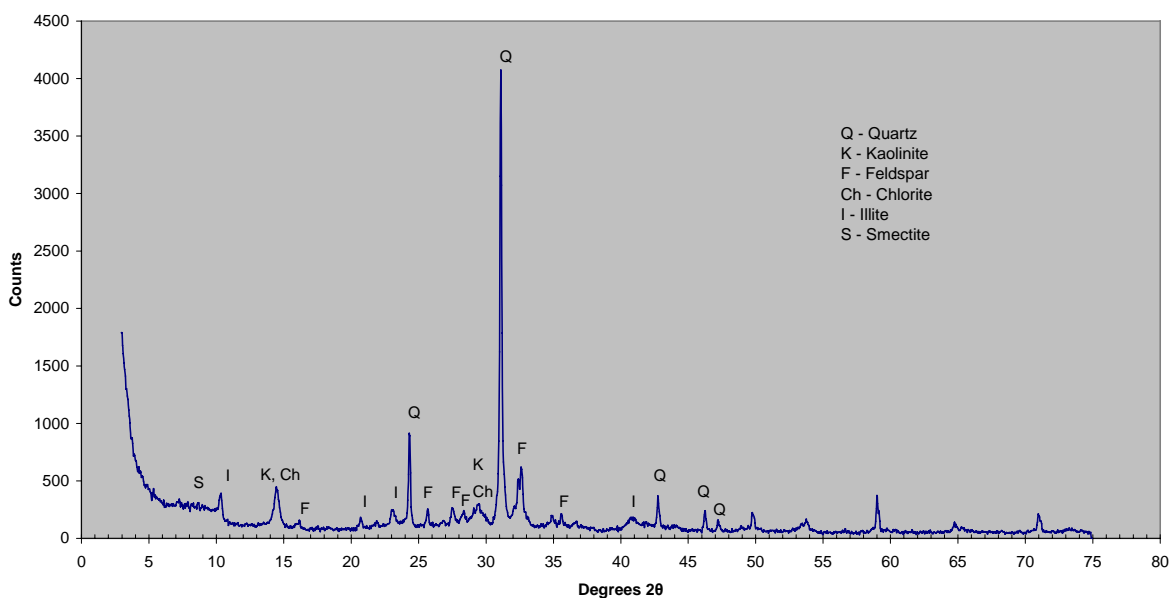
Reedy Creek-1 Sidewall core 1668m
Unit V - Siltstone



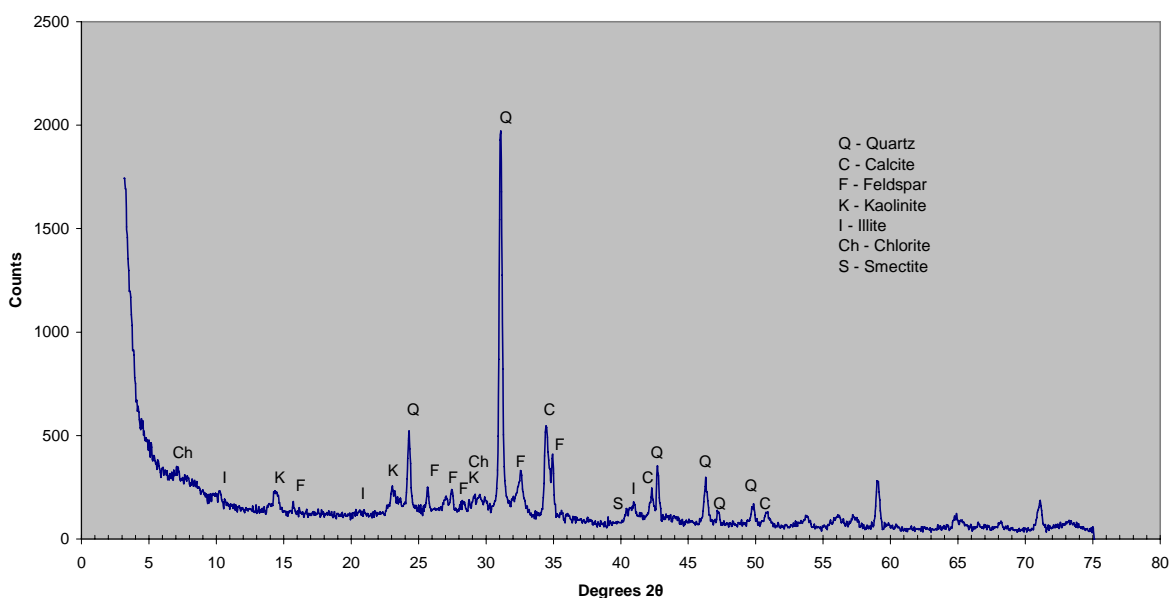
Sophia Jane-1 Cuttings 1515-1520m
Unit V - Siltstone



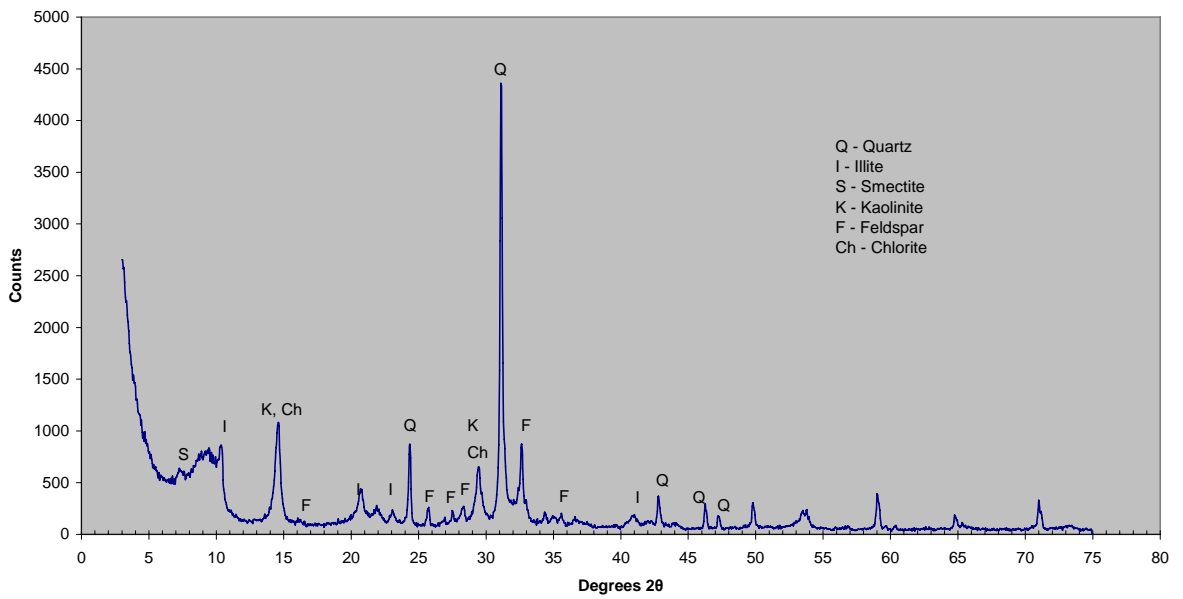
St Clair-1 Sidewall core 1924m
Unit V - Siltstone



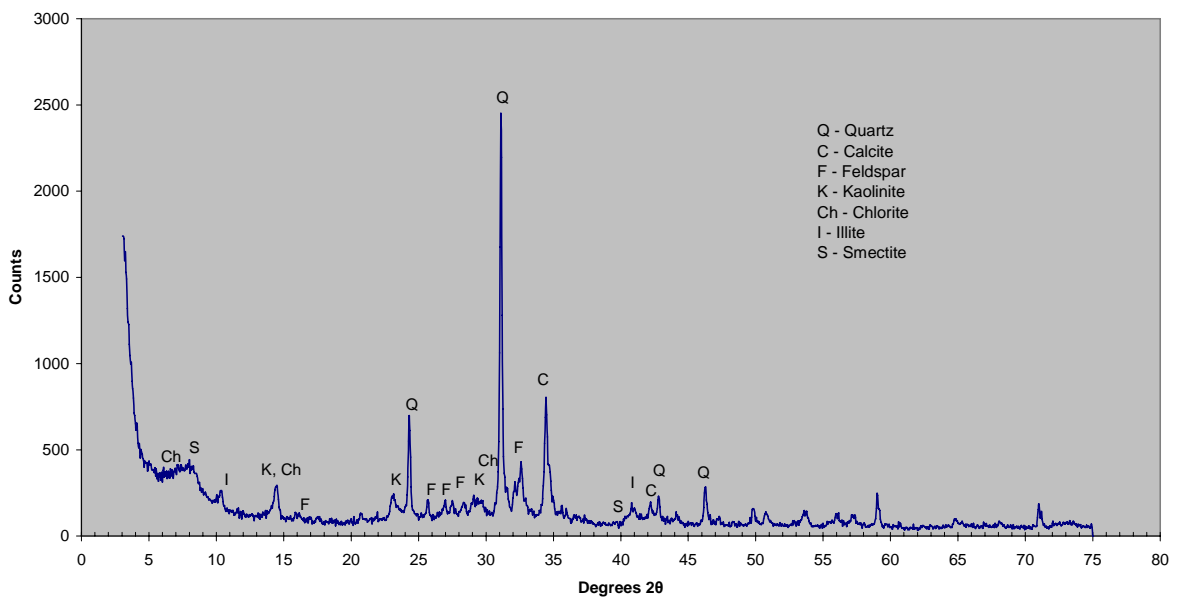
Trumpet-1 Cuttings 1268-1280m
Unit V - Black carbonaceous siltstone



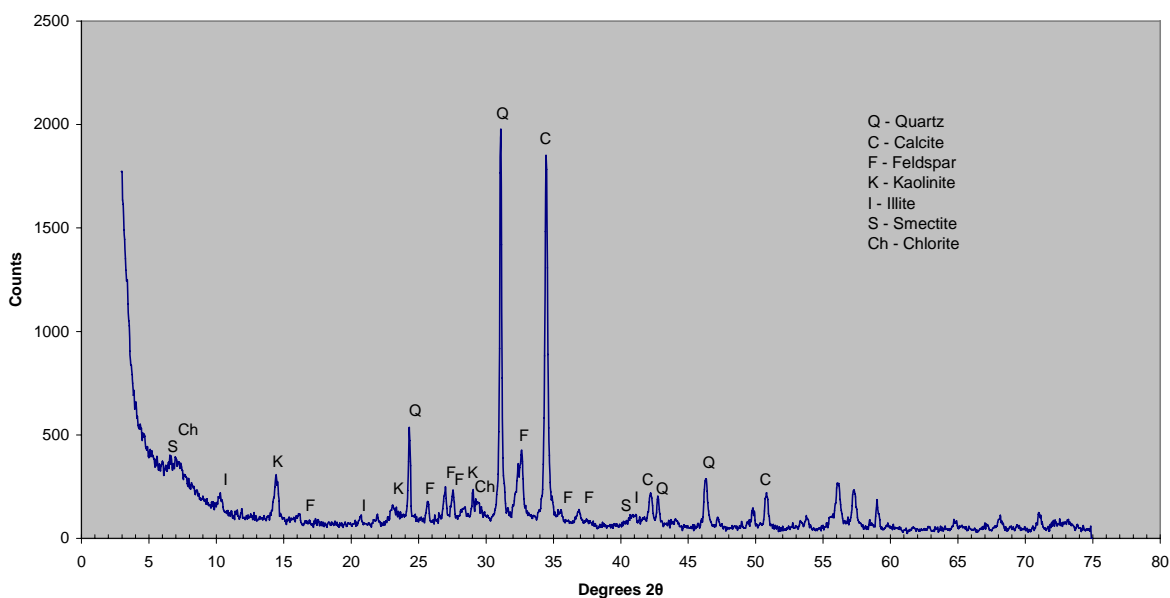
Geltwood Beach-1 Core 3016.3m
Unit IV - Fine carbonaceous siltstone



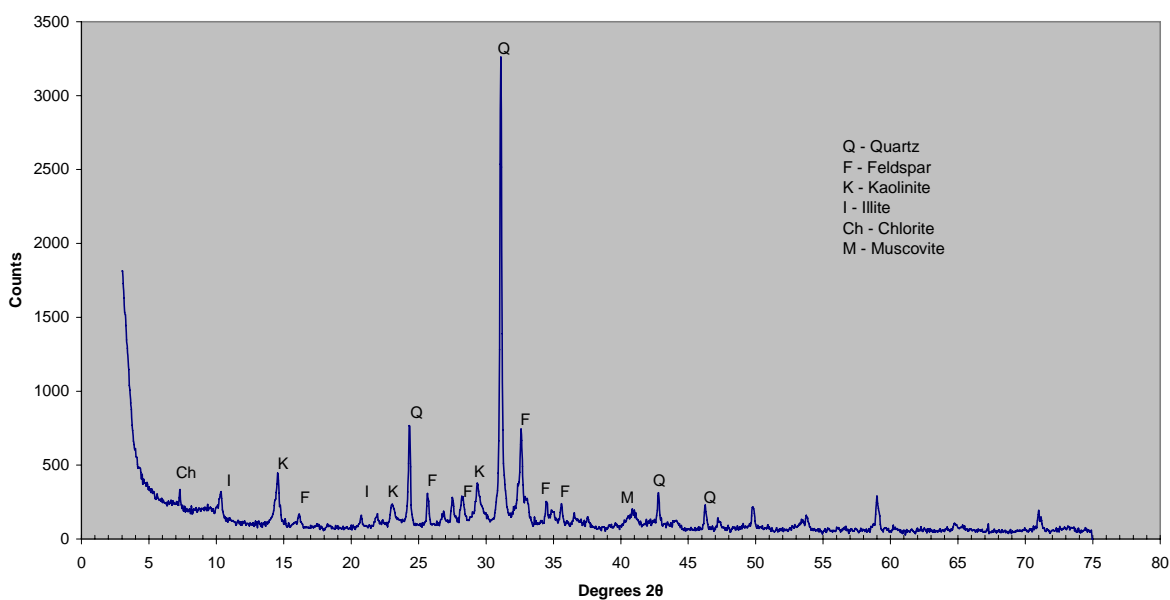
Lake Eliza-1 Cuttings 887-893m
Unit IV - Coarse siltstone



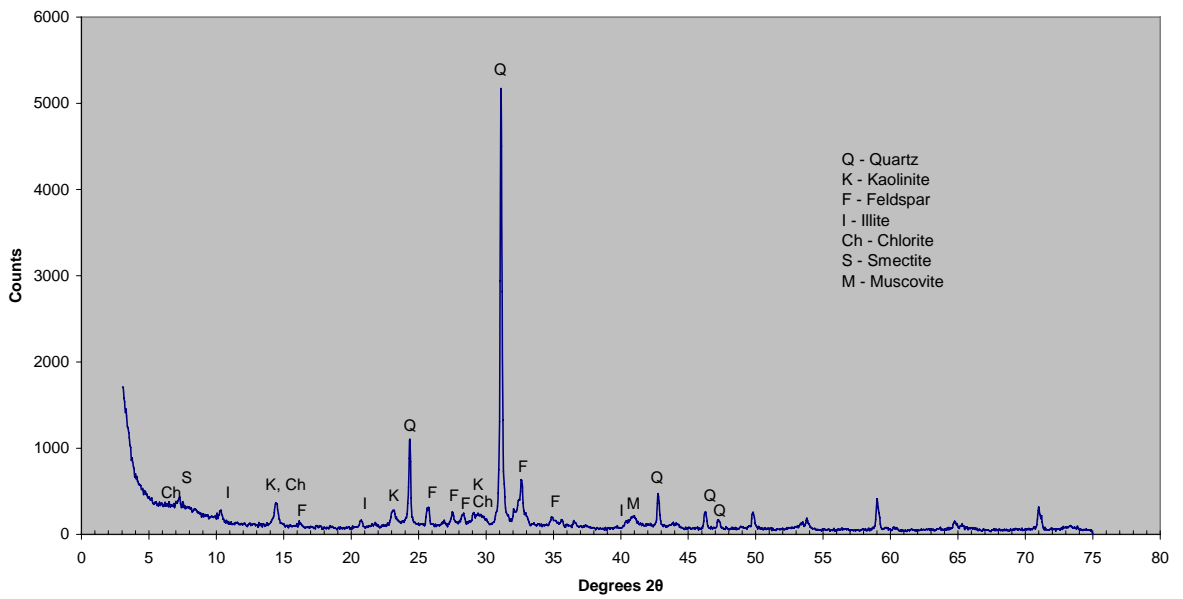
Mocamboro-11 Core 617.72m
Unit IV - Calcareous silty claystone



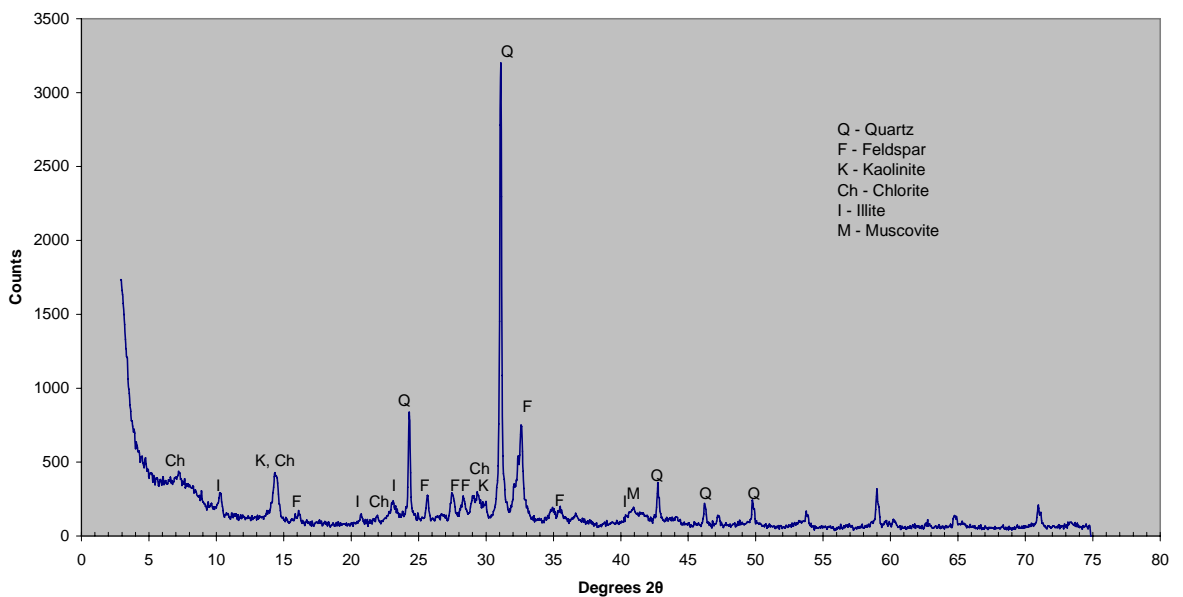
Troas-1 Cuttings 2020-2030m
Unit IV - Silty claystone



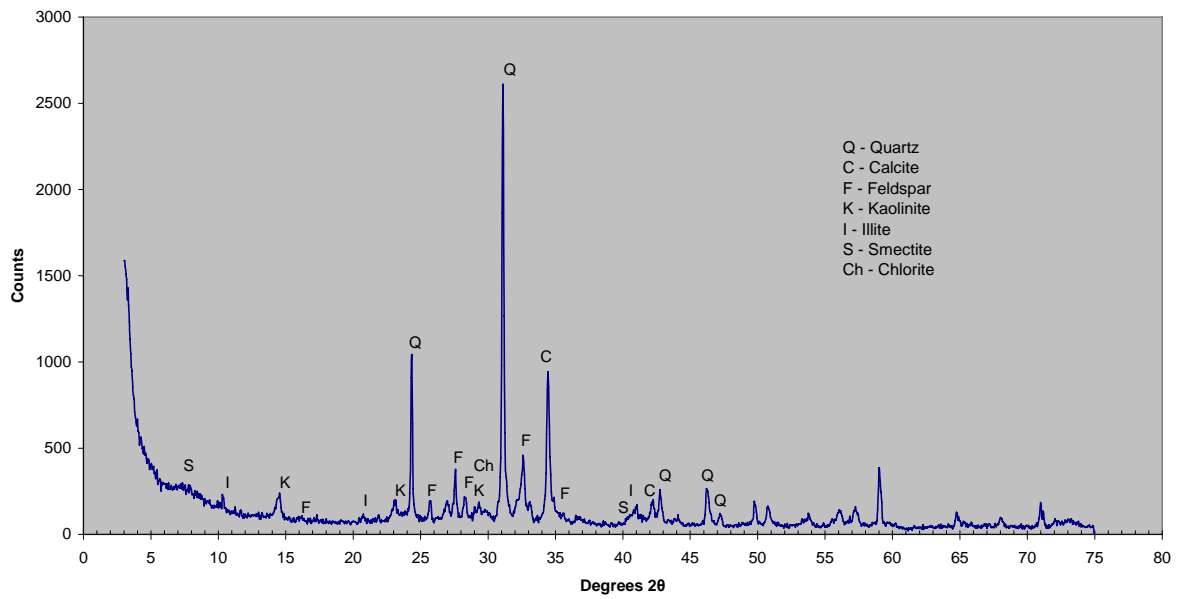
Crayfish-1A Core 1175.7m
Unit III - Fine siltstone (light gray)



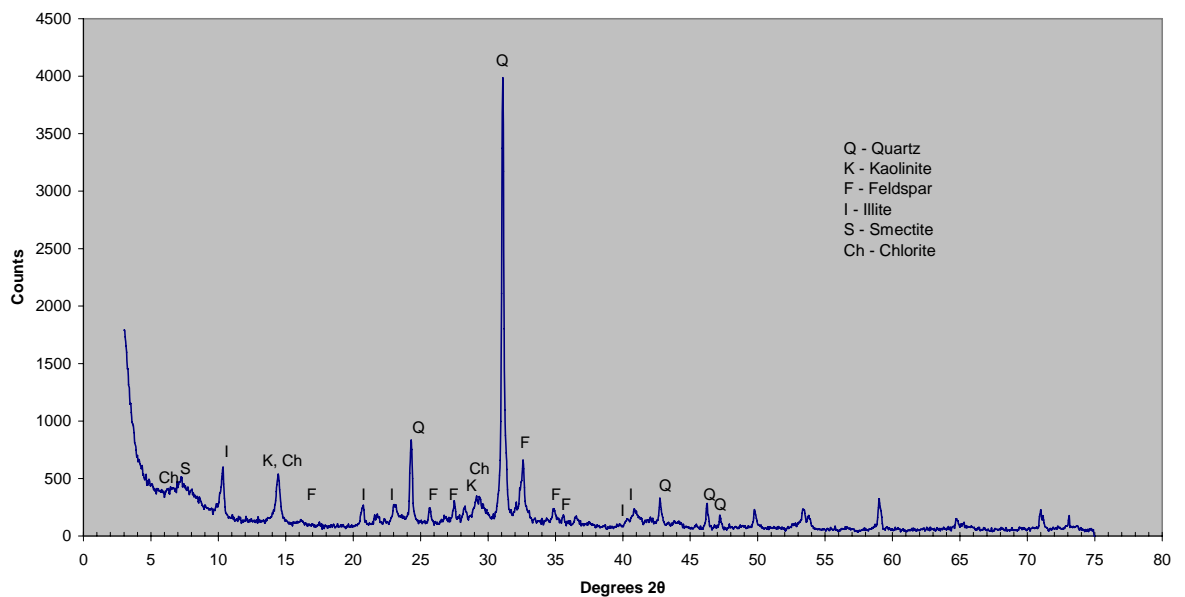
Mocamboro-11 Core 328m
Unit III - Coarse siltstone with mud rip-up clasts



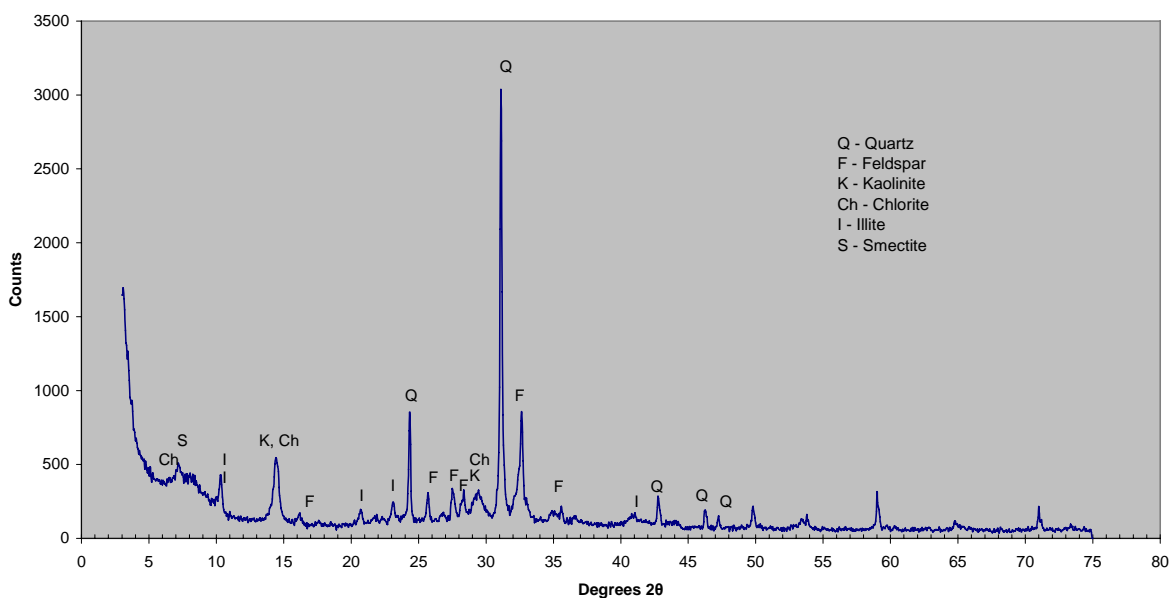
Trumpet-1 Cuttings 877-896m
Unit III - Calcareous siltstone



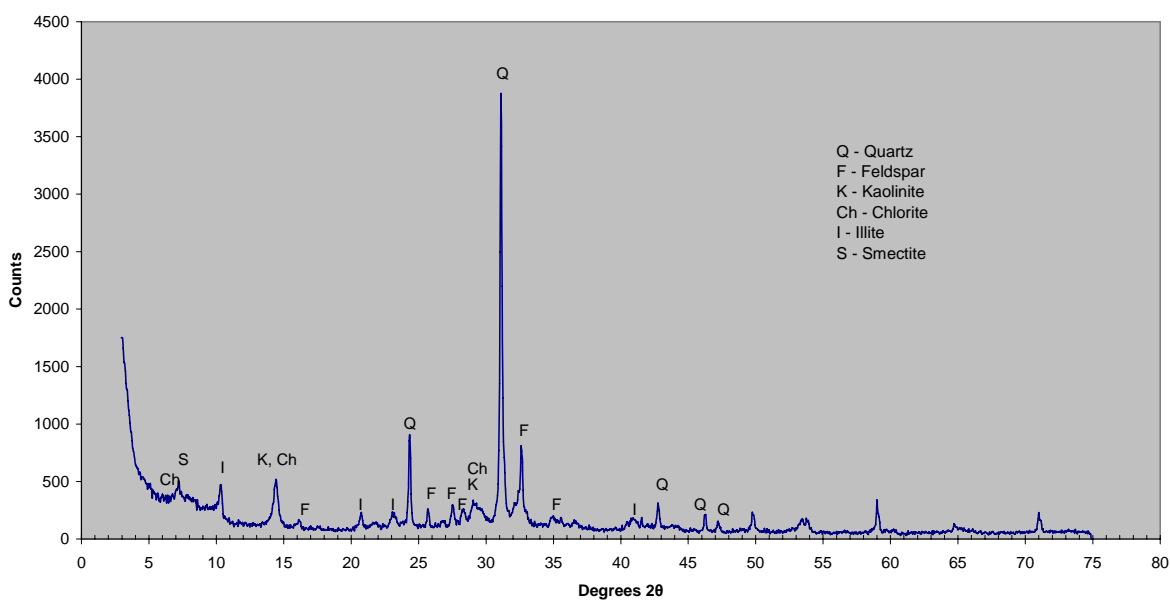
Crayfish-1A Core 1005.4m
Unit II - Fine siltstone (green-gray)



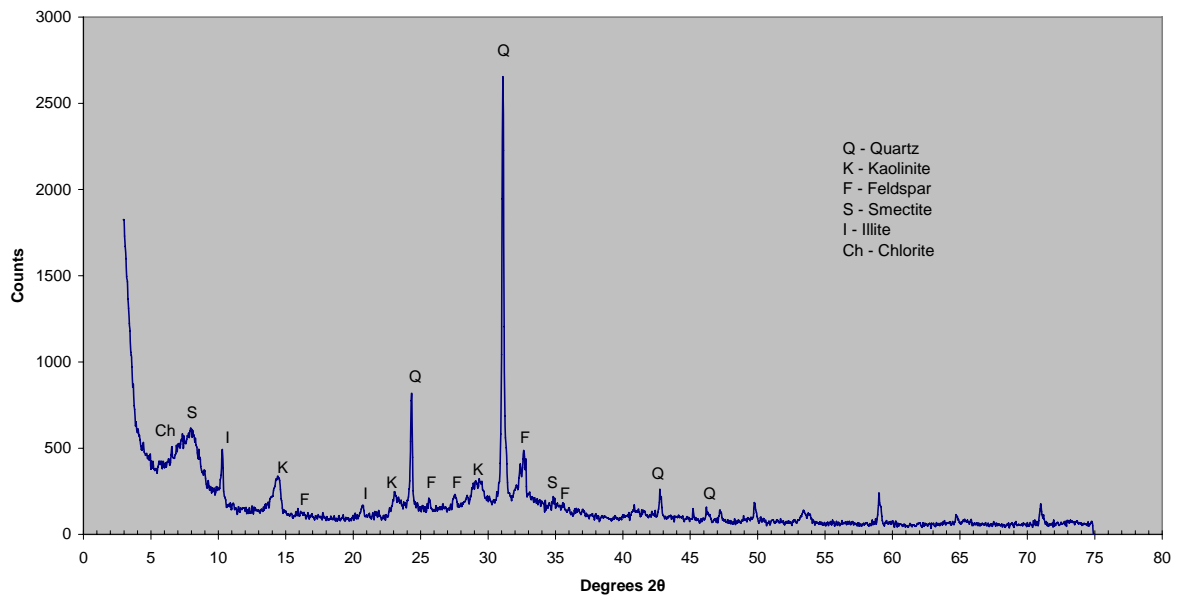
Kalangadoo-1 Core 1363.7m
Unit II - Carbonaceous siltstone



Kalangadoo-1 Core 1194.2m
Unit II - Silty claystone



Troas-1 Cuttings 1030-1050m
Unit II - Coarse siltstone







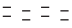

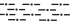






Appendix B

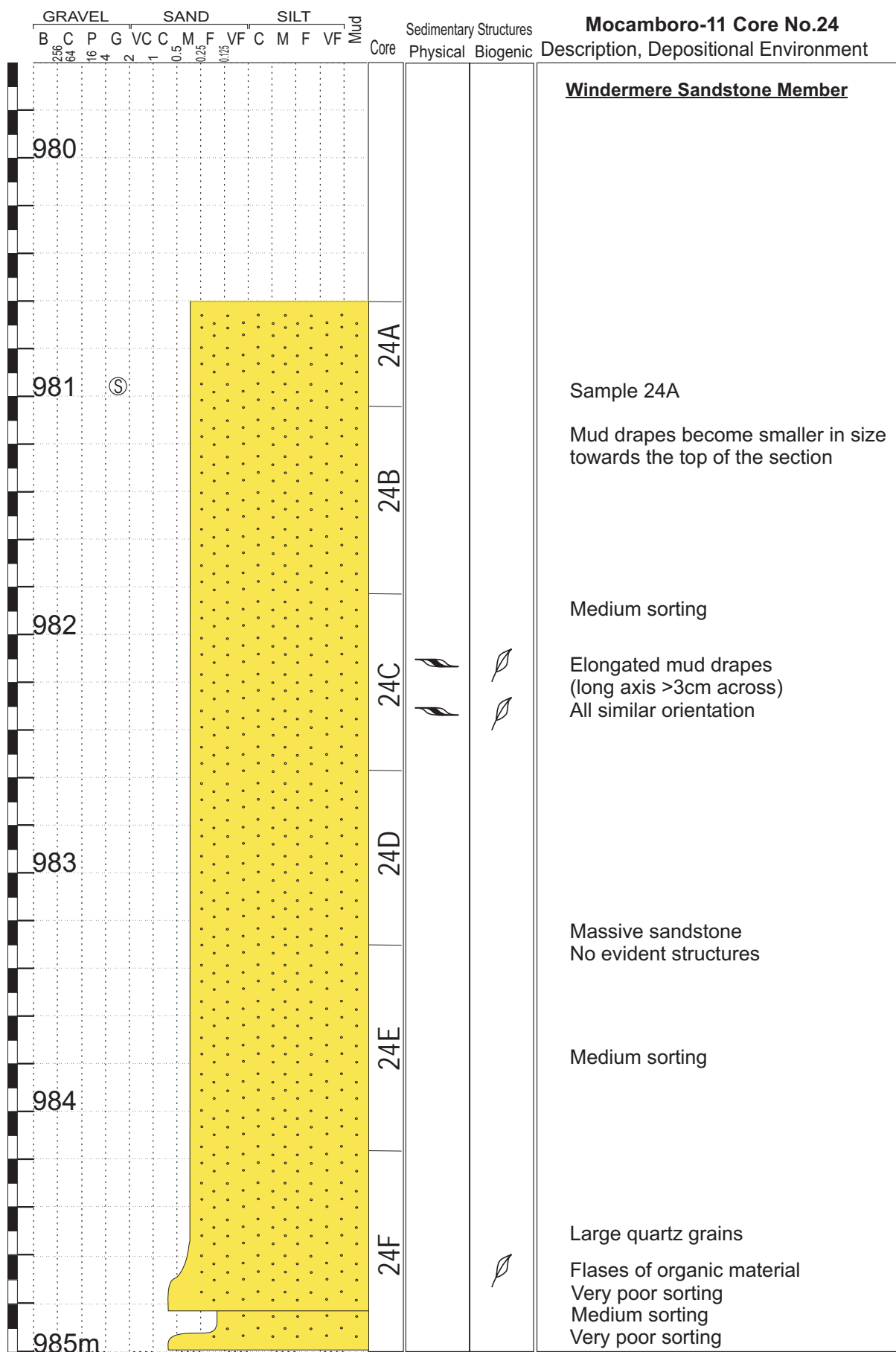
CORE LOGS

Appendix B - Table of Contents

Core Legend.....	147
Mocamboro-11 Core No. 24 Windermere Sandstone Member	148
Mocamboro-11 Core No. 23 Eumeralla Fm Unit VI	149
Mocamboro-11 Core No. 22 Eumeralla Fm Unit VI	150
Mocamboro-11 Core No. 21 Eumeralla Fm Unit V	151
Mocamboro-11 Core No. 19 Eumeralla Fm Unit V	152
Mocamboro-11 Core No. 18 Eumeralla Fm Unit V	153
Mocamboro-11 Core No. 16 Eumeralla Fm Unit V	154
Mocamboro-11 Core No. 14 Eumeralla Fm Unit V	155
Mocamboro-11 Core No. 13 Eumeralla Fm Unit V	156
Mocamboro-11 Core No. 12 Eumeralla Fm Unit V	157
Mocamboro-11 Core No. 11 Eumeralla Fm Unit V	158
Mocamboro-11 Core No. 10 Eumeralla Fm Unit V	159
Mocamboro-11 Core No. 9 Eumeralla Fm Unit III	160
Mocamboro-11 Core No. 8 Eumeralla Fm Unit III	161
Mocamboro-11 Core No. 7 Eumeralla Fm Unit II	162
Mocamboro-11 Core No. 5 Eumeralla Fm Unit II	163
Mocamboro-11 Core No. 5 Eumeralla Fm Unit II top	164
Mocamboro-11 Core No. 4 Eumeralla Fm Unit II	165
Mocamboro-11 Core No. 3 Eumeralla Fm Unit II	166
Mocamboro-11 Core No. 2 Eumeralla Fm Unit II	167

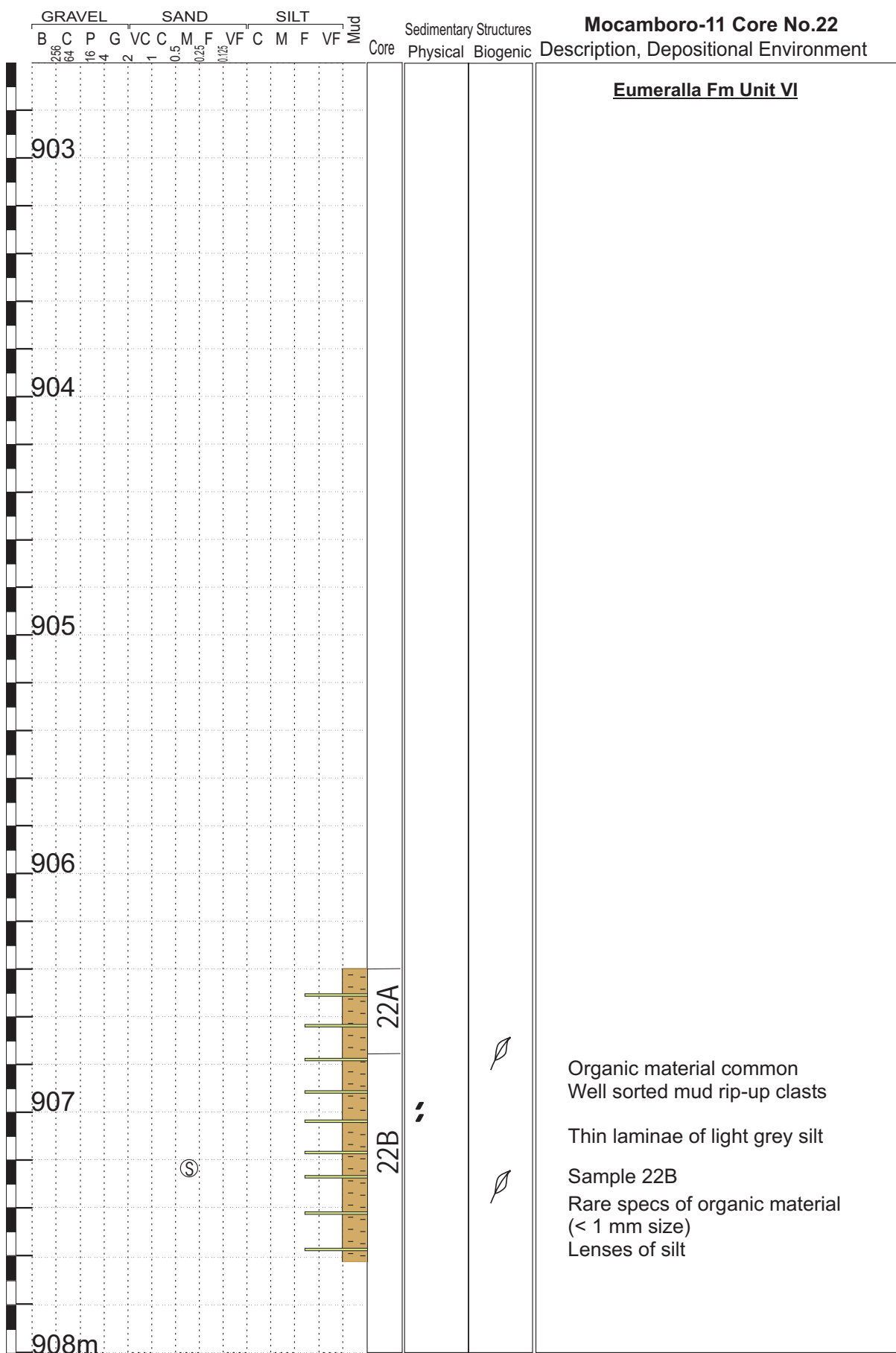
Core Legend

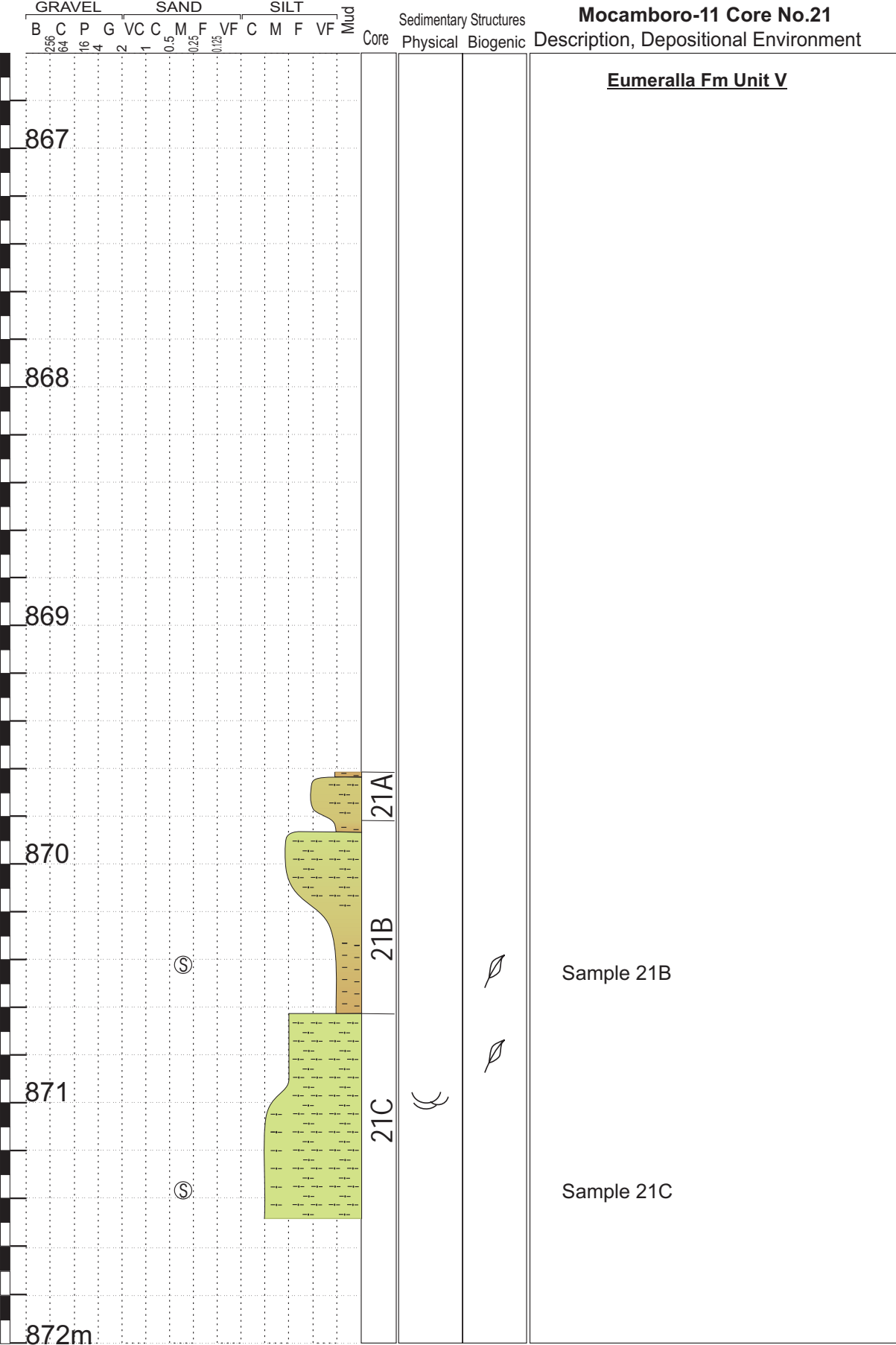
	Plant Fragments		Clay drapes
	In situ Rhizoliths		Lamination, weak, undifferentiated
	Shale		Trough cross bedding
	Siltstone		Shale Rip up Clast
	Sandstone		Soft sediment deformation
	Pebbles		Fault or fracture
	Coal		

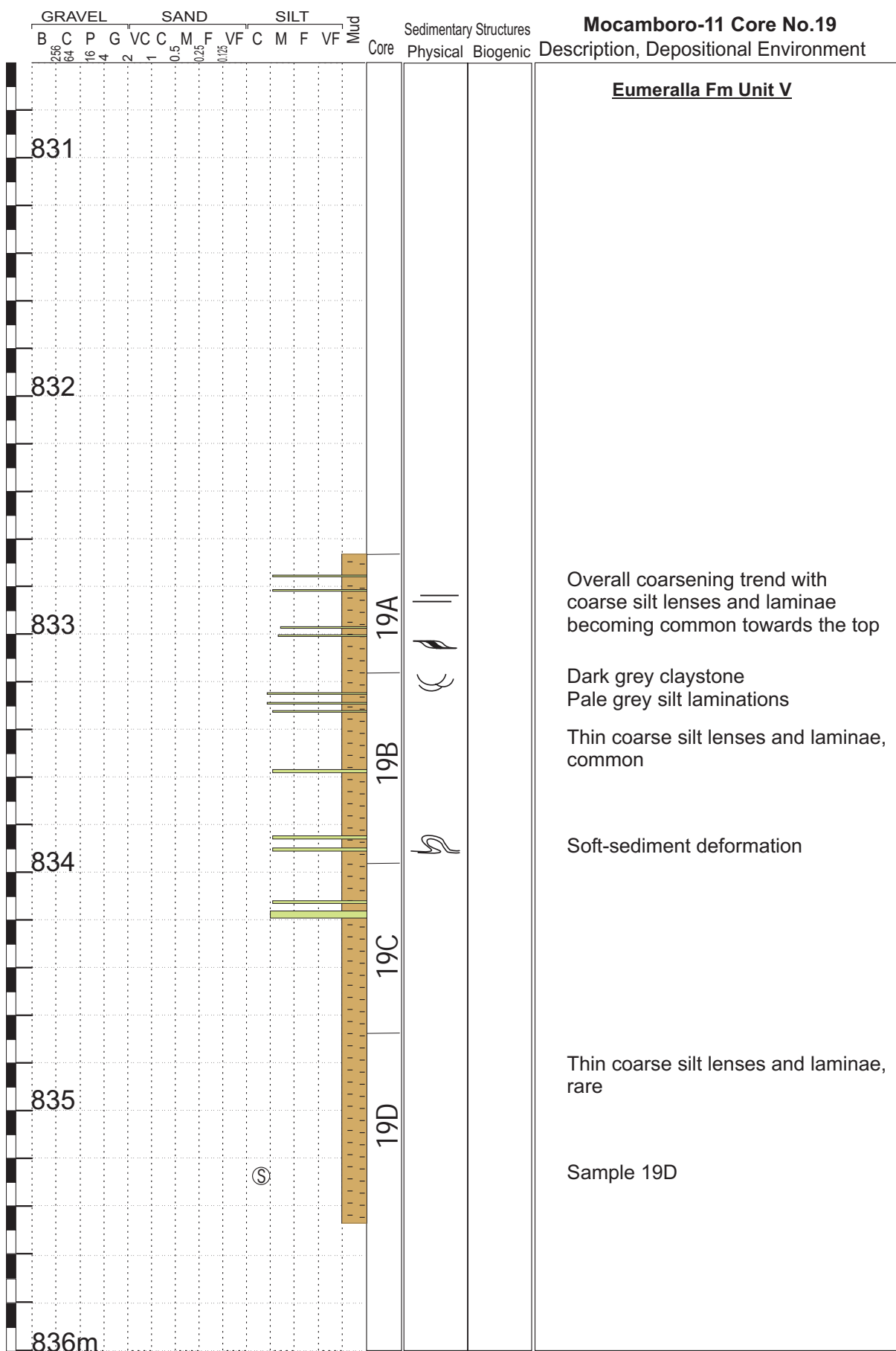


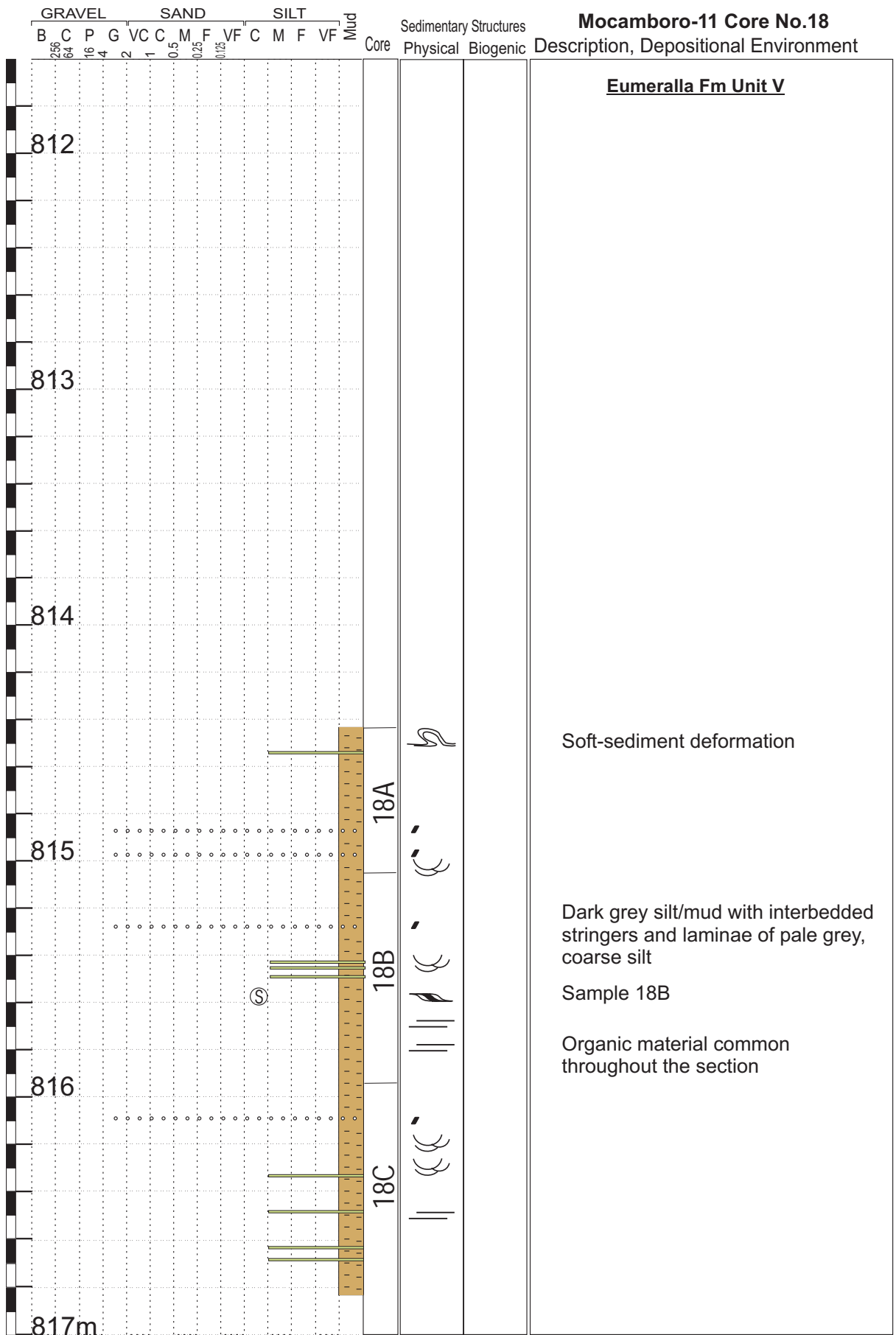
Core	GRAVEL			SAND				SILT				Mud	Sedimentary Structures Physical Biogenic	Description, Depositional Environment	
	B	C	P	G	VC	C	M	F	VF	C	M				F
940															
941															
942															
943															
944															
945m															

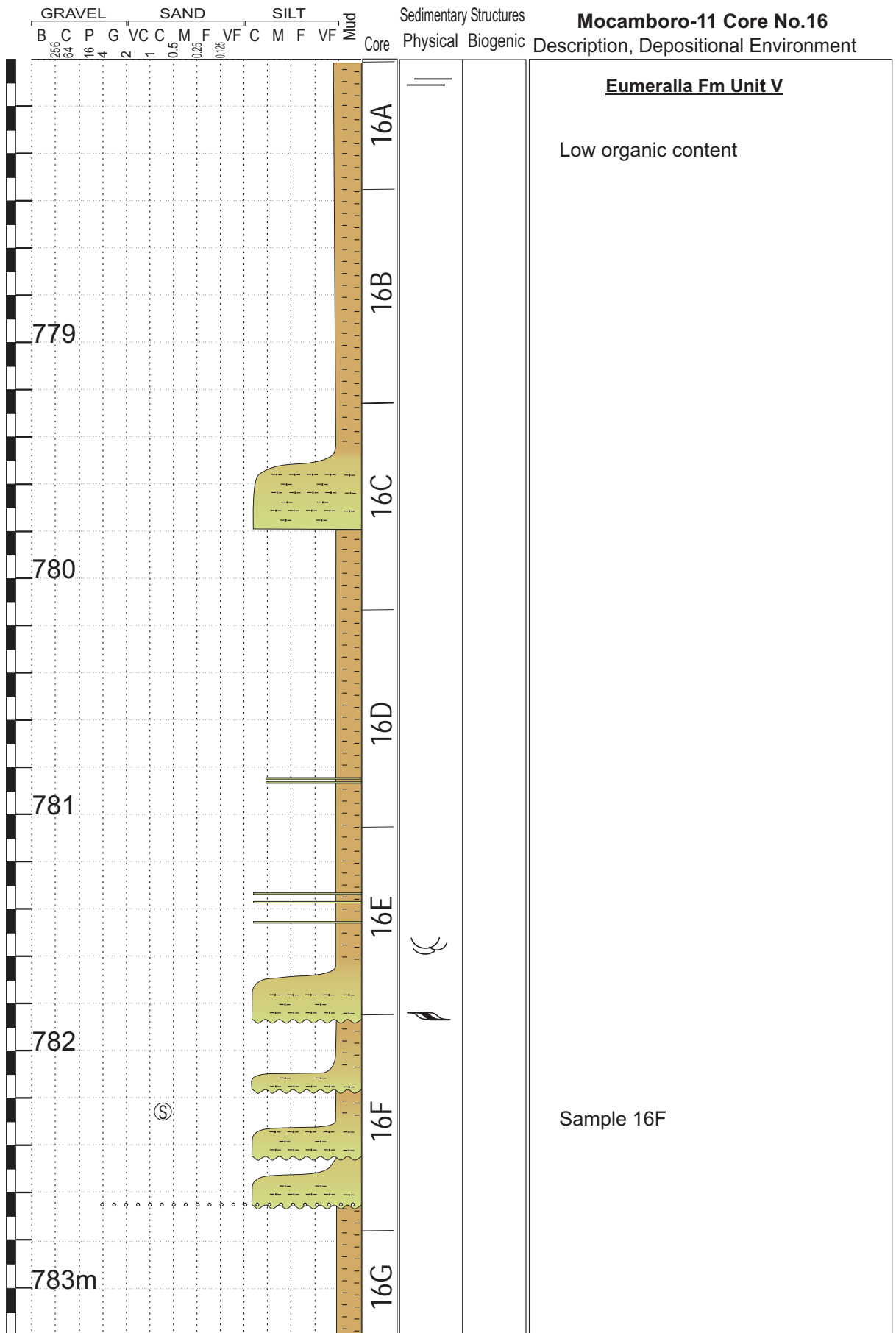
Core	Sample	Description, Depositional Environment
23	Sample 23	Massive claystone Rare organic material as small specs

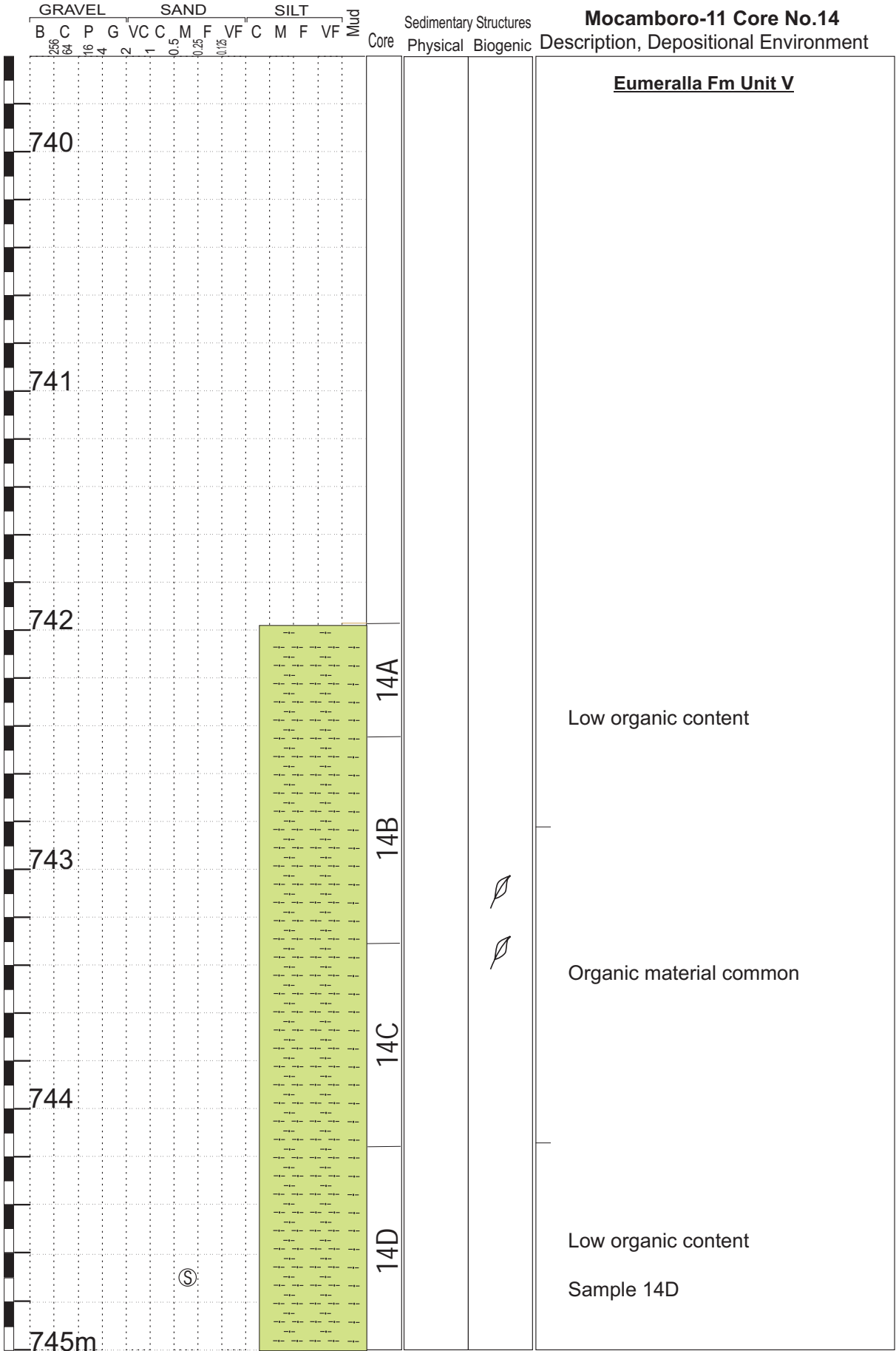


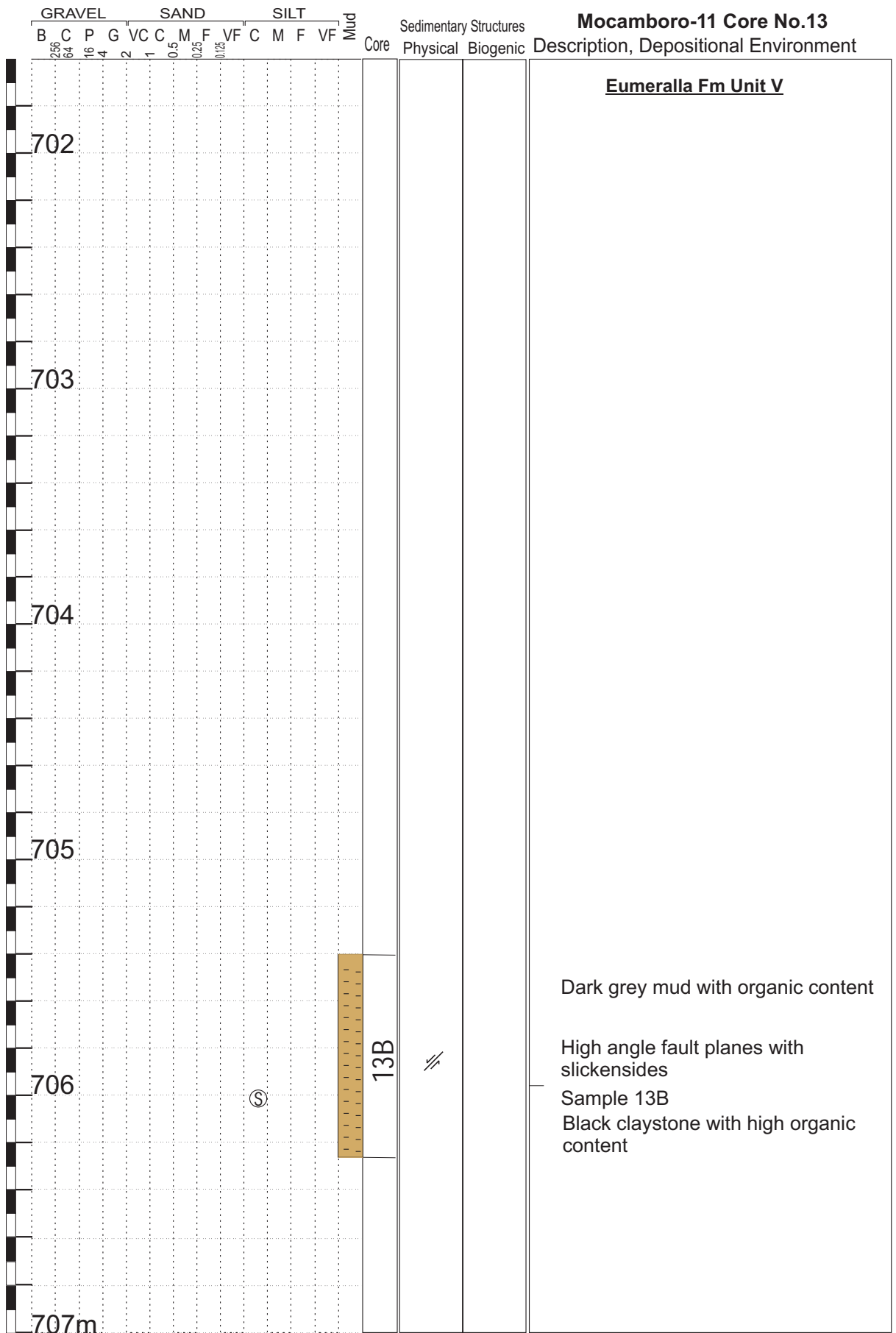


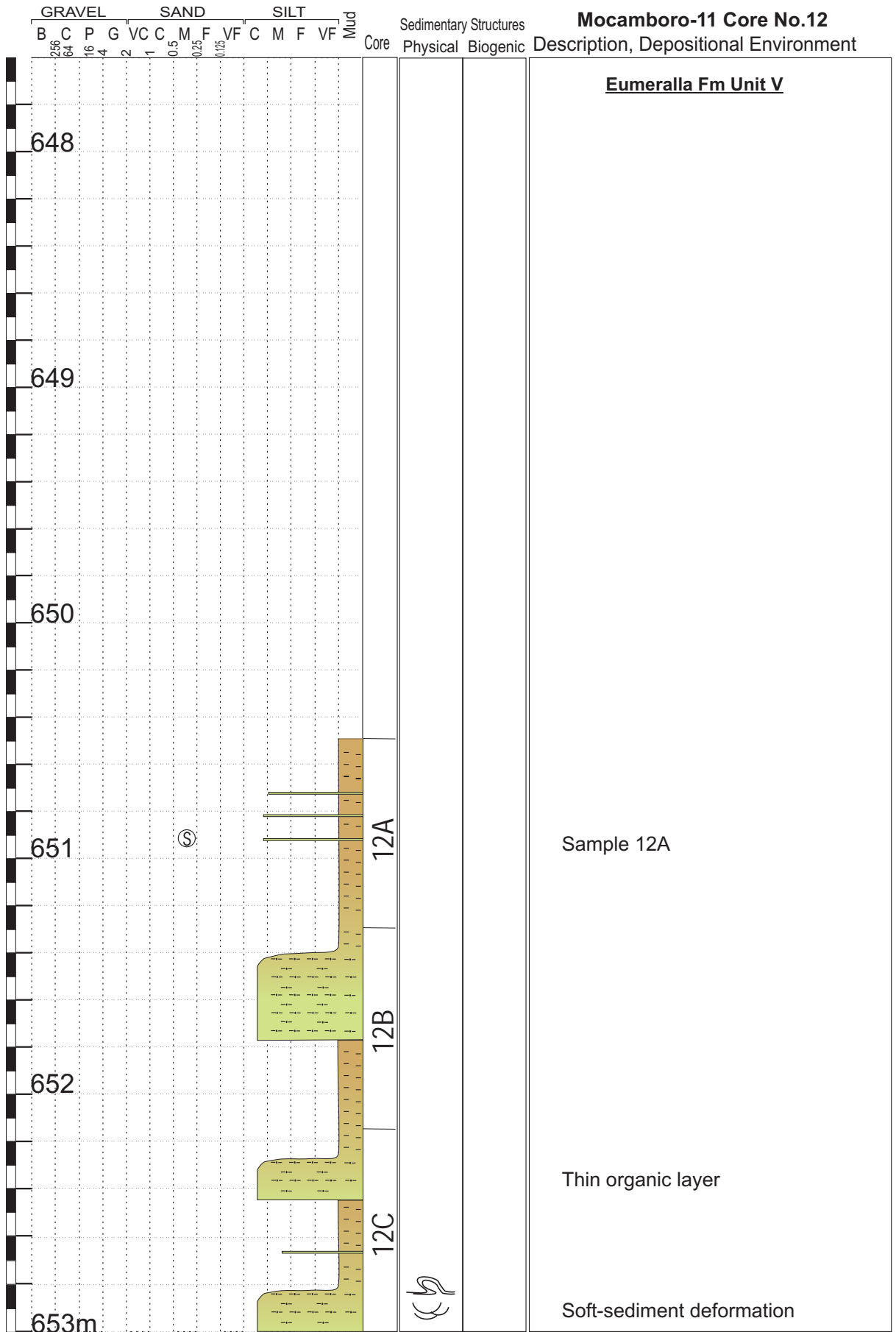


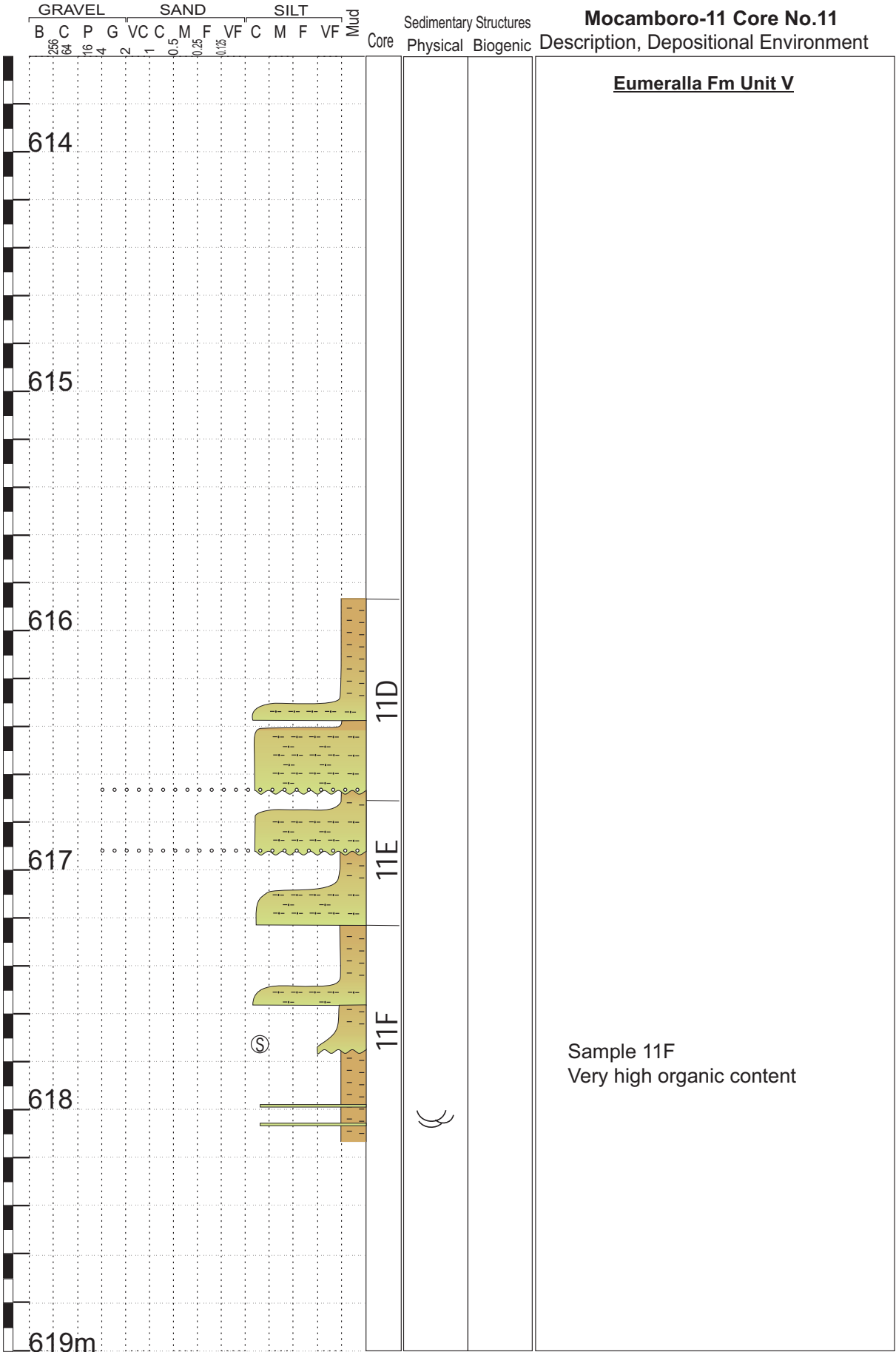


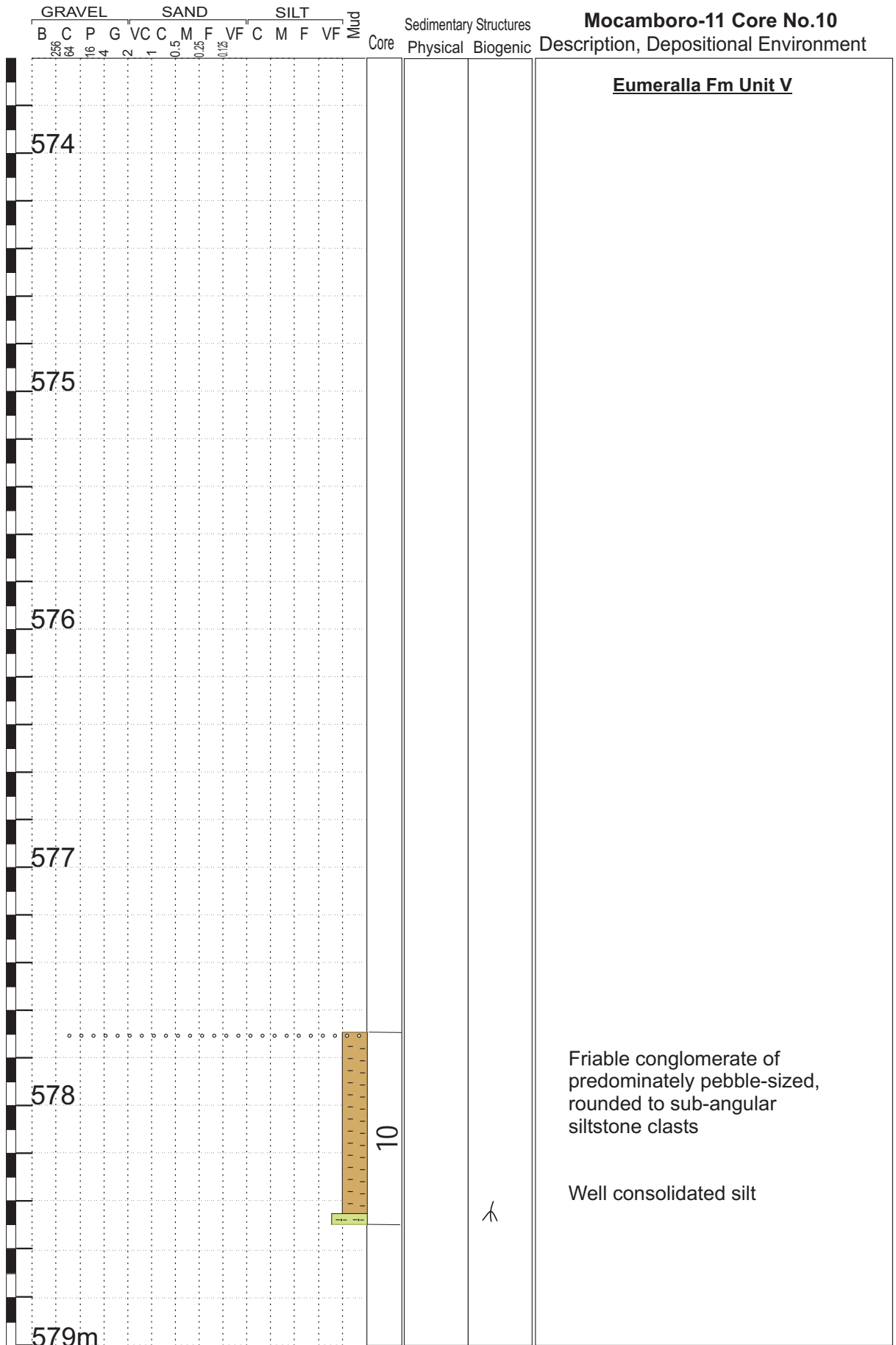


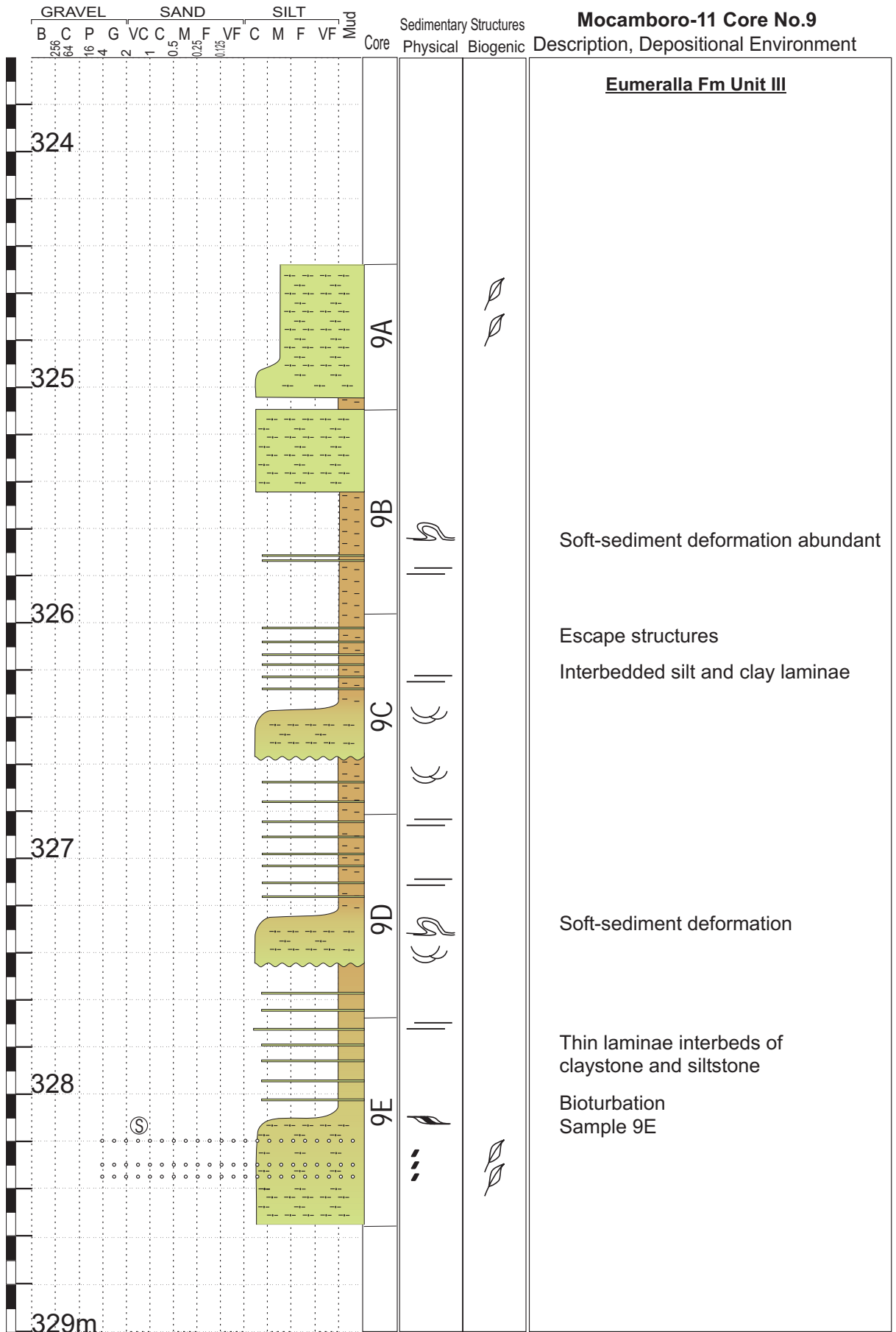


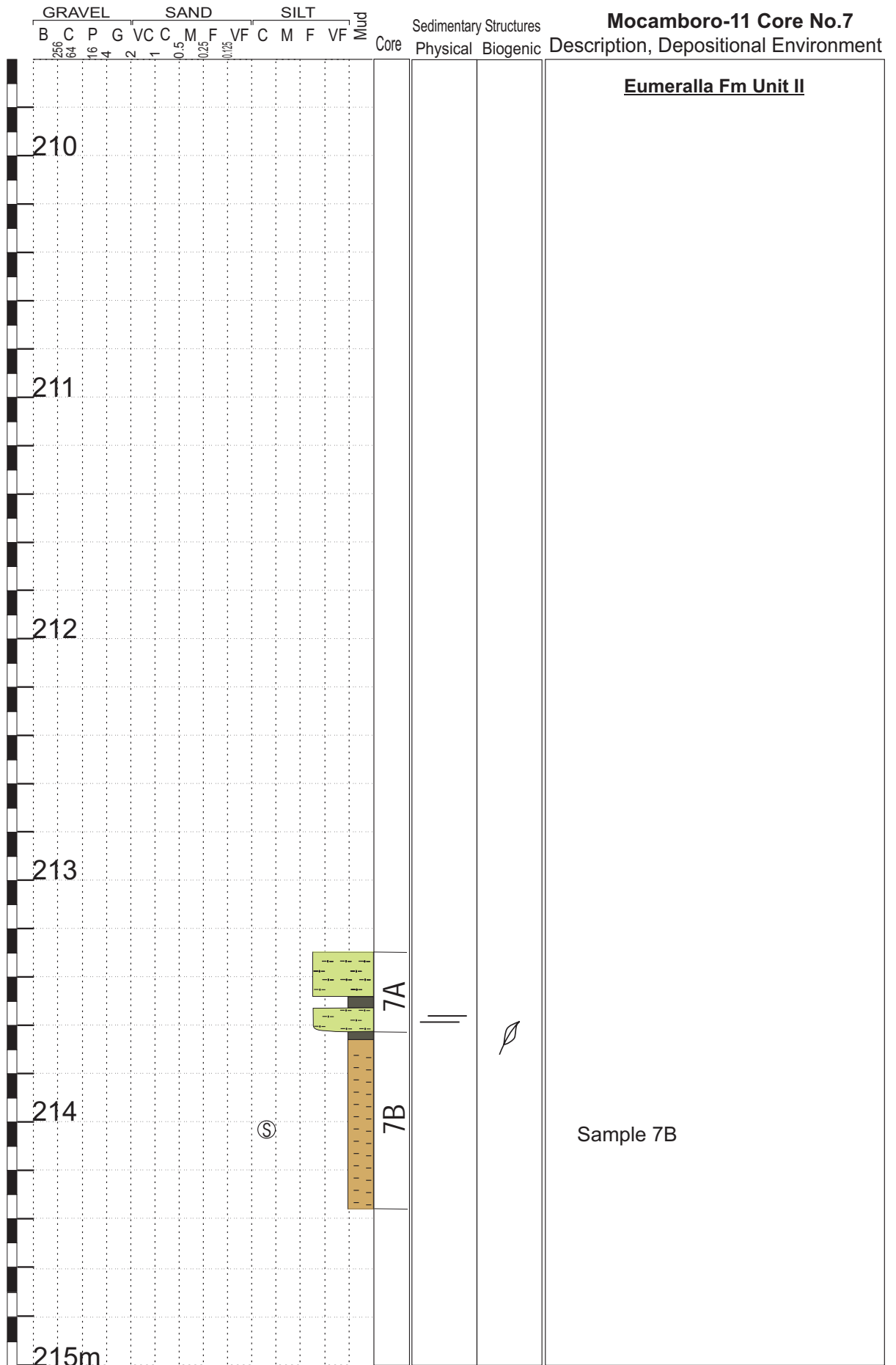


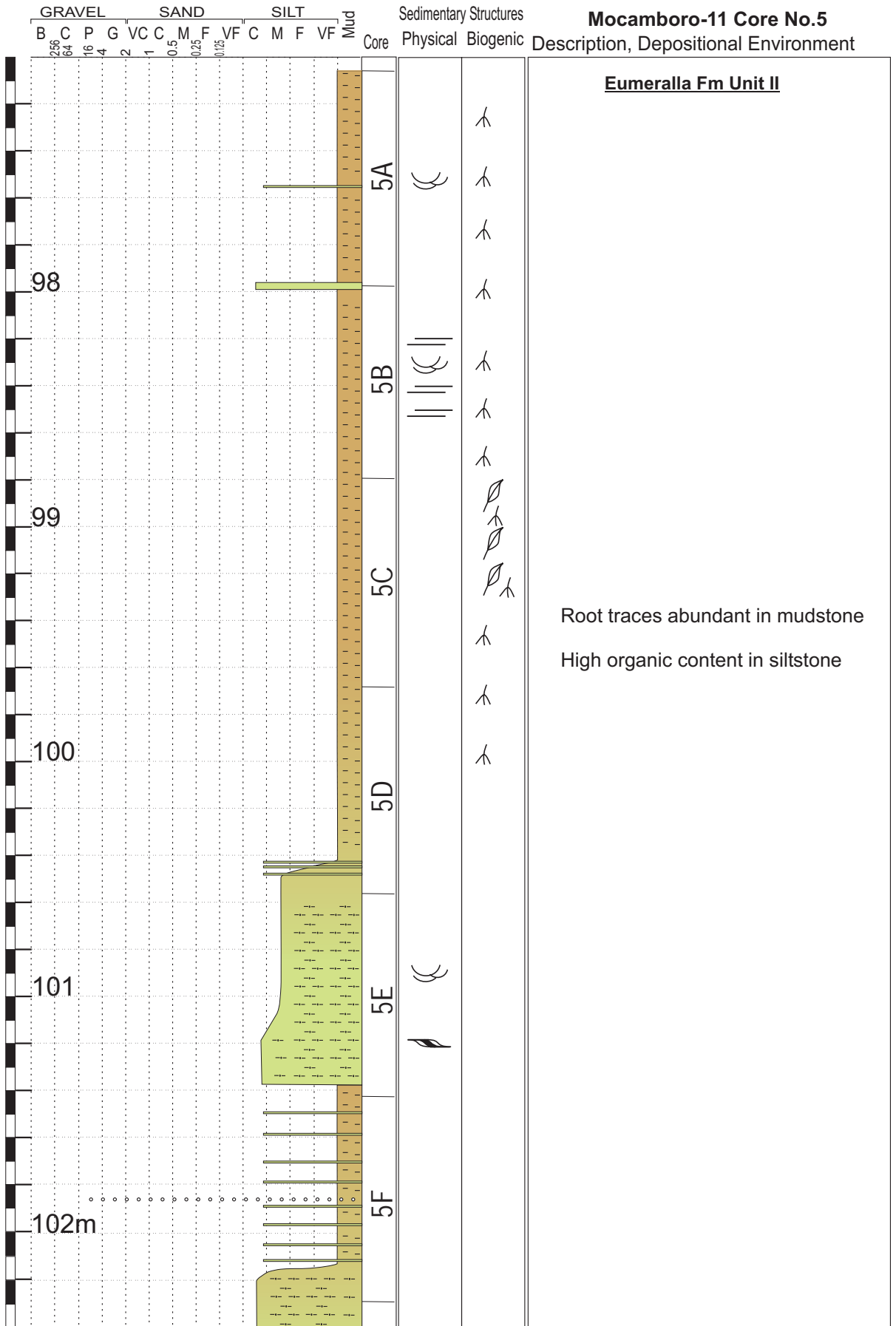












	GRAVEL			SAND					SILT				Mud	Core	Sedimentary Structures		Description, Depositional Environment	
	B	C	P	G	V	C	C	M	F	VF	C	M			F	VF		Physical
	256	64	16	4	2	1	0.5	0.25	0.125								<u>Eumeralla Fm Unit II</u>	
98m																		
																		5A
																		((
																		^ ^

