



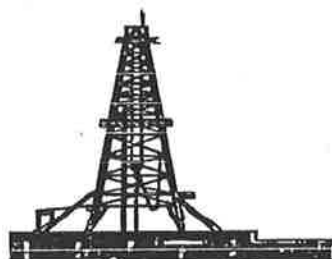
NERDDC / SENRAC RESEARCH PROJECT

Origin, Evolution and Controls of Permian Reservoir Sandstones in the Southern Cooper Basin, South Australia

Author:

J.P. Schulz-Rojahn, M.Sc., B.Sc.(Hons.)

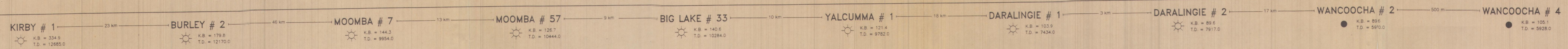
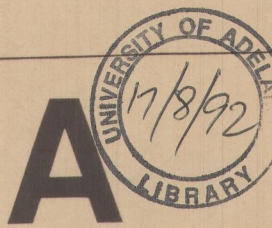
Thesis submitted to the University of Adelaide in fulfilment of the
requirement for the degree of Doctor of Philosophy



National Centre for Petroleum Geology & Geophysics (NCPGG)/
Department of Geology & Geophysics

- November 1991 -

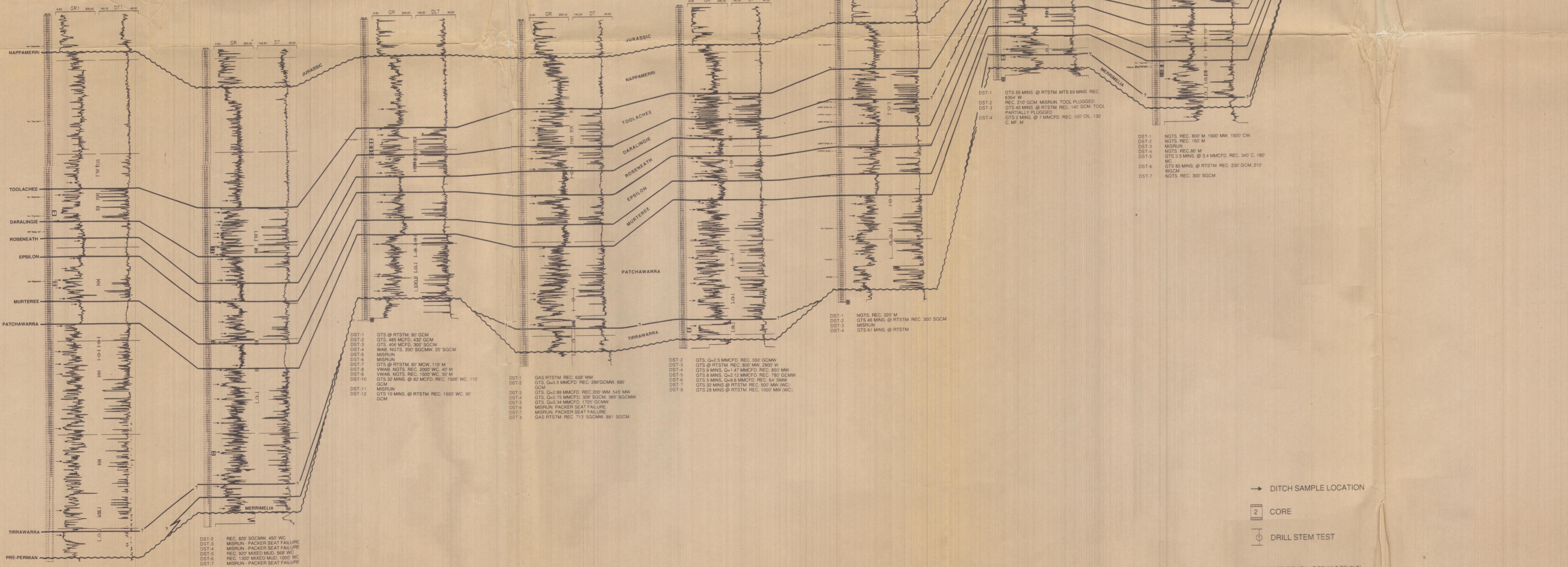
09PH
S389
c.2



A' NCPGG

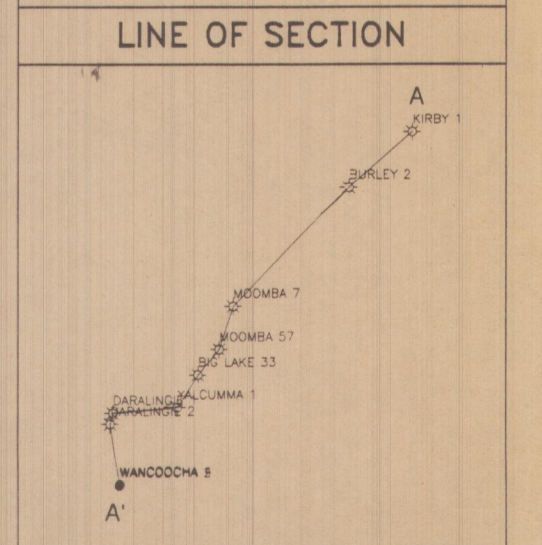
NATIONAL CENTRE FOR PETROLEUM GEOLOGY & GEOPHYSICS

DST-1 GTS 7 MINS @ 600 MCFD REC 80' GCM TRACE CONDENSATE
DST-2 GTS 26 MINS @ RTSTM REC 200' GCW CUSHION 240' GC DRILLING FLUID
DST-3 GTS 18 MINS @ RTSTM REC 85' GCW CUSHION 34' GC DRILLING FLUID
DST-4 GTS 19 MINS @ RTSTM REC 92' GCW CUSHION 87' GC DRILLING FLUID
DST-5 NGTS REC 2768' W CUSHION 30' DRILLING FLUID
DST-6 GTS 45 MINS @ RTSTM REC 2535' W CUSHION 183' GC DRILLING FLUID
DST-7 GTS 75 MINS @ RTSTM REC 2620' W CUSHION 214' GC DRILLING FLUID
DST-8 GTS 41 MINS @ 2.5 MMCFD AND DECLINING
DST-9 NGTS REC 5010' W CUSHION 90' DRILLING FLUID
DST-10 MISRUN - PACKER SEAT FAILURE
DST-11 MISRUN - PACKER SEAT FAILURE
DST-12 NGTS REC 7000' W



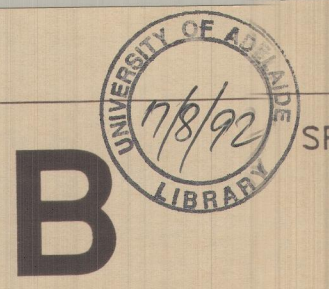
- DITCH SAMPLE LOCATION
- ▬ CORE
- DRILL STEM TEST

INTERPRETATION BY J.P. SCHULZ-ROJAHN
JANUARY 1990



PEL 5 & 6
NAPPAMERRI TROUGH
SOUTHERN COOPER BASIN
LINE A-A'
PERMO-TRIASSIC SECTION
DATUM: SEA LEVEL

09PH
S389
C.2



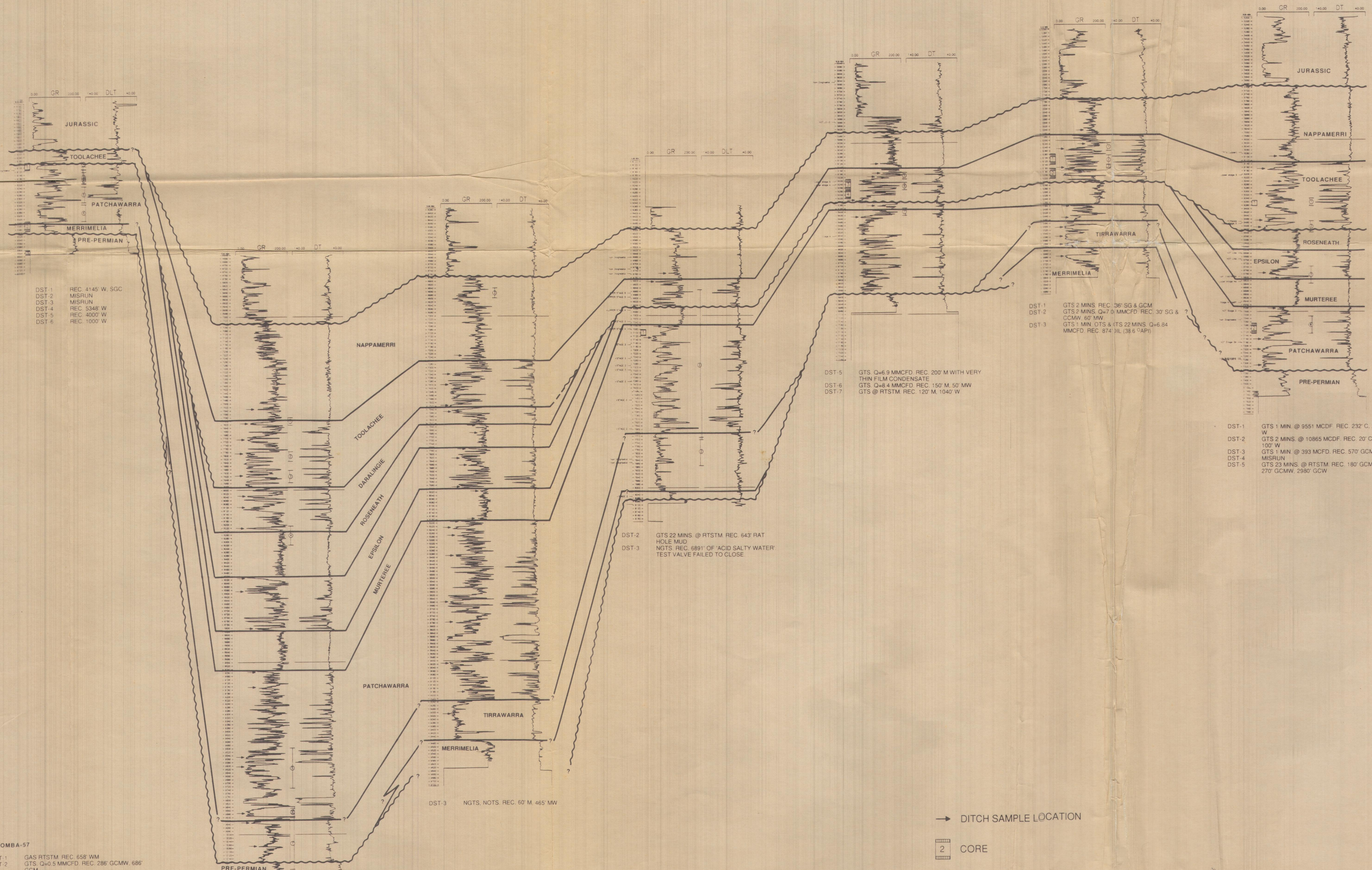
B

B' NCPGG

NATIONAL
CENTRE
FOR
PETROLEUM
GEOLOGY &
GEOPHYSICS

SPENCER # 1 41 km MOOMBA # 57 3 km BIG LAKE # 26 13 km NAMUR # 1 17 km MARABOOKA # 1 10 km STRZELECKI # 10 17 km KIDMAN # 1

K.B. = 123.4 T.D. = 6758.0 K.B. = 126.7 T.D. = 10444.0 K.B. = 129.9 T.D. = 9756.0 K.B. = 135.9 T.D. = 8231.0 K.B. = 181.9 T.D. = 7164.0 K.B. = 217.0 T.D. = 7010.0 K.B. = 240.0 T.D. = 7732.0



DST 1 REC 4145 W SGC
DST 2 MISRUN
DST 3 MISRUN
DST 4 REC 5348 W
DST 5 REC 4000 W
DST 6 REC 1000 W

DST 1 GTS 2 MINS REC 36' SG & GCM
DST 2 GTS 2 MINS Q=7.0 MMCFD REC 30' SG & 7' GCMW 60 MW
DST 3 GTS 1 MIN GTS & ITS 22 MINS Q=6.84 MMCFD REC 874' 3/4 (38.6 °API)

DST 5 GTS Q=6.9 MMCFD REC 200' M WITH VERY THIN FILM CONDENSATE
DST 6 GTS Q=8.4 MMCFD REC 160' M 50' MW
DST 7 GTS @ RTSTM REC 120' M 1040' W

DST 2 GTS 22 MINS @ RTSTM REC 643' RAT HOLE MUD NGTS REC 6891' OF ACID SALTY WATER TEST VALVE FAILED TO CLOSE
DST 3

DST-1 GTS 1 MIN @ 9551 MCFD REC 232' C 29' W
DST-2 GTS 2 MINS @ 10865 MCFD REC 20' C 100' W
DST-3 GTS 1 MIN @ 393 MCFD REC 570' GCMW
DST-4 MISRUN
DST-5 GTS 23 MINS @ RTSTM REC 180' GCM 270' GCMW 2580' GCW

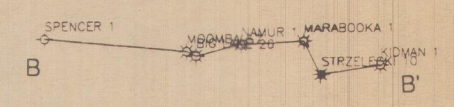
DST-3 NGTS, NOTS, REC. 60 M 485' MW

MOOMBA-57
DST-1 GAS RTSTM REC 558' WM
DST-2 GTS Q=0.5 MMCFD REC 286' GCMW 686' GCM
DST-3 GTS Q=2.88 MMCFD REC 200' WM 545' MW
DST-4 GTS Q=0.75 MMCFD REC 328' SGCW 389' SGCW
DST-5 GTS Q=0.34 MMCFD REC 1720' GCMW
DST-6 MISRUN
DST-7 MISRUN
DST-8 GAS RTSTM REC 713' SGCW 981' SGCW

- DITCH SAMPLE LOCATION
- 2 CORE
- DRILL STEM TEST

INTERPRETATION BY J.P. SCHULZ-ROJAHN
JANUARY 1990

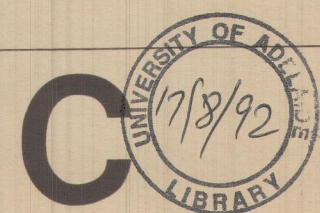
LINE OF SECTION



PEL 5 & 6
NAPPAMERRI TROUGH AND VICINITY
SOUTHERN COOPER BASIN
LINE B-B'
PERMO-TRIASSIC SECTION
DATUM: SEA LEVEL

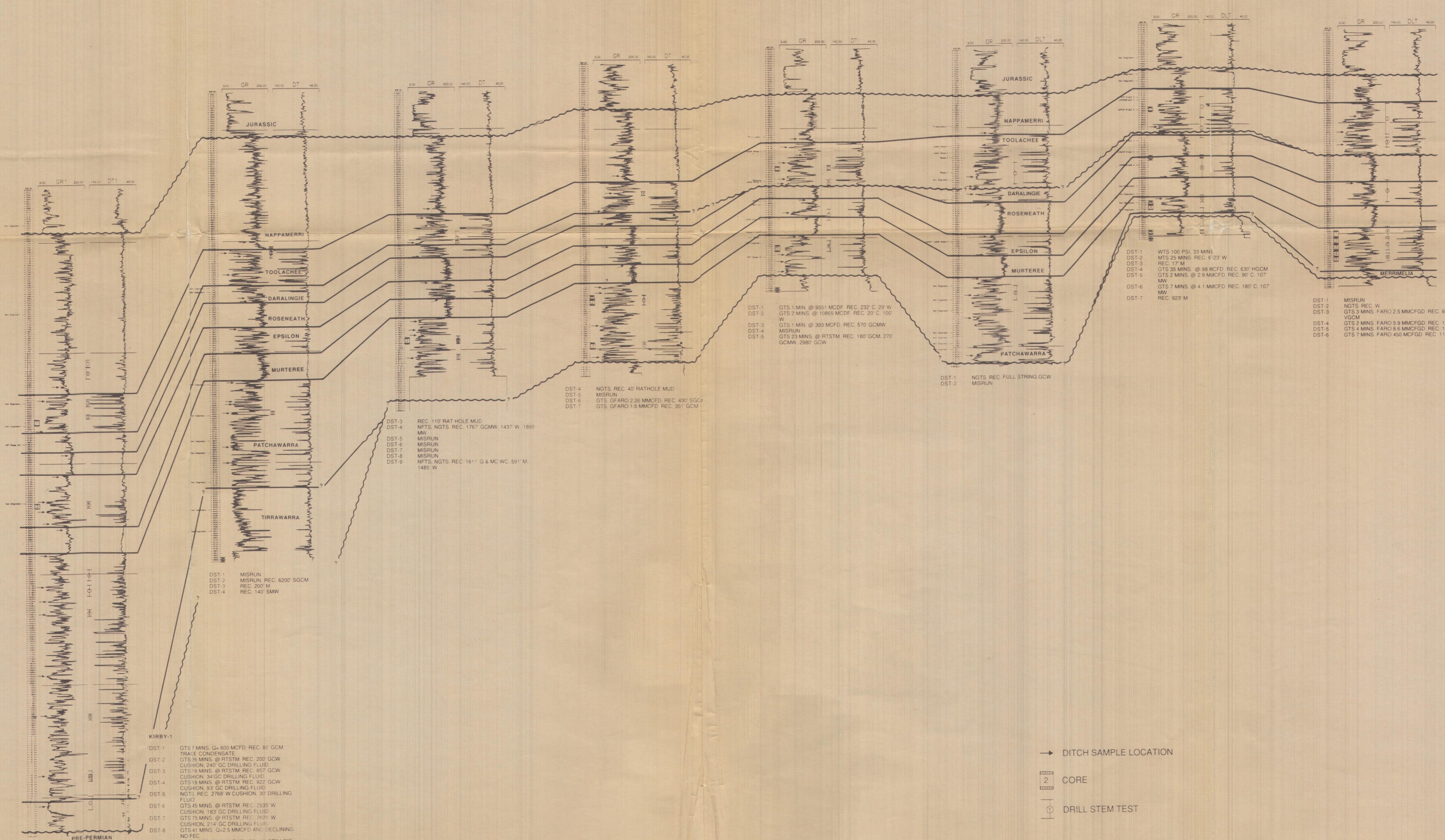
ENCLOSURE 2

09PH
S389
c.2



KIRBY # 1 38 km THREE QUEENS # 1 16 km DULLINGARI # 39 5 km DULLINGARI # 18 12 km KIDMAN # 1 14 km TOOLACHEE EAST # 1 11 km TOOLACHEE # 1 3 km TOOLACHEE # 3

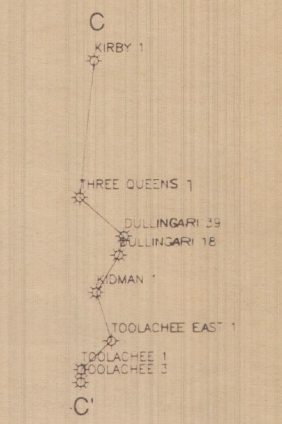
C' NCPGG
NATIONAL
CENTRE
FOR
PETROLEUM
GEOLOGY &
GEOPHYSICS



- DITCH SAMPLE LOCATION
- CORE
- DRILL STEM TEST

INTERPRETATION BY J.P. SCHULZ-ROJAHN
JANUARY 1990

LINE OF SECTION



PEL 5 & 6
NAPPAMERRI TROUGH AND VICINITY
SOUTHERN COOPER BASIN
LINE C-C'
PERMO-TRIASSIC SECTION
DATUM: SEA LEVEL