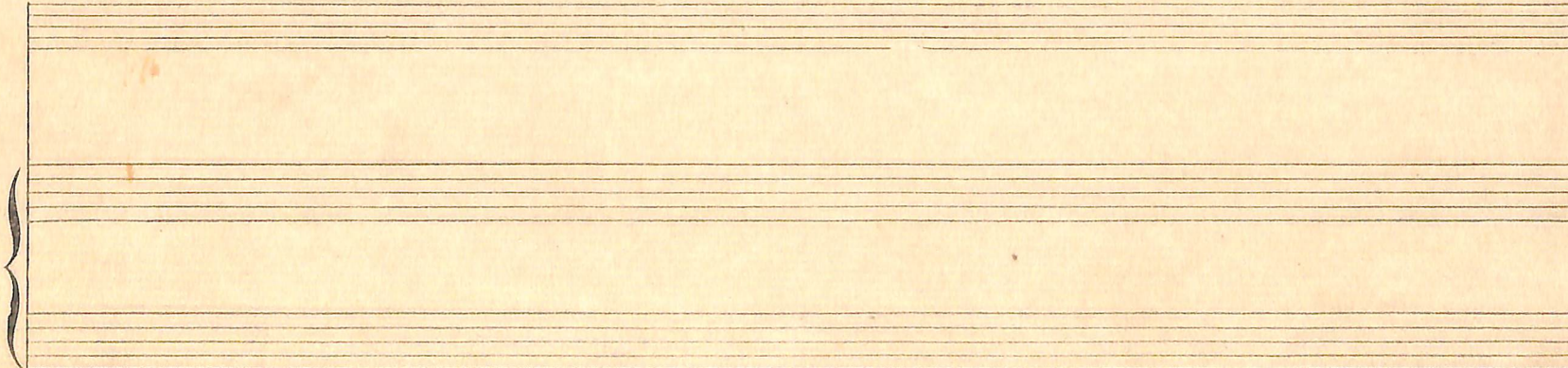
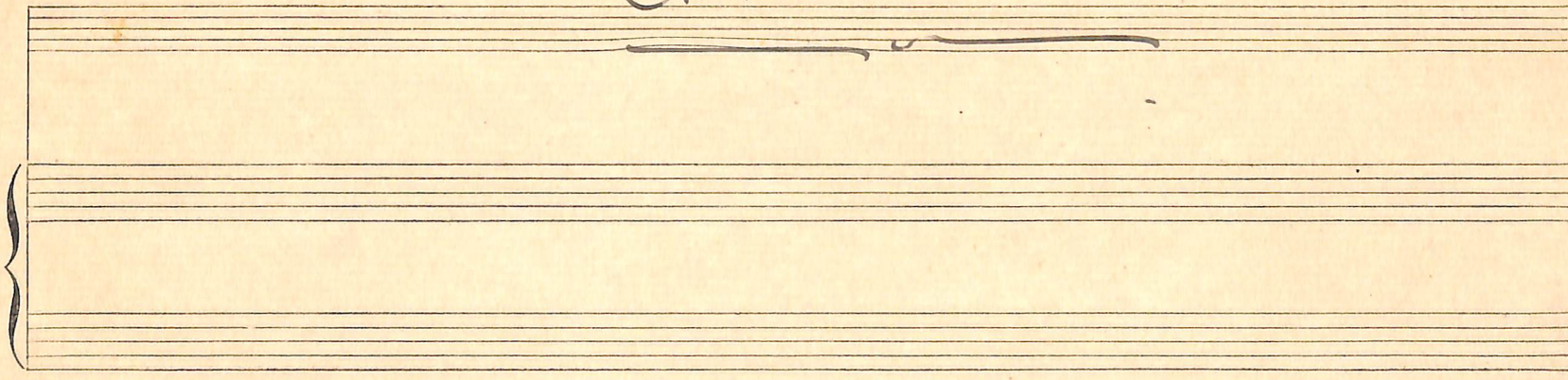


"The nightingale has a eye of gold"

Words by W.E. Henley.

Music by

Arthur Williamson





Words by  
W.E. Henley

"The nightingale has a lyre of gold"

Arthur Williams

Musical notation for the first system, including a treble clef, a 7-measure rest, and piano accompaniment.

Musical notation for the second system with lyrics "The nightingale has a lyre of gold. The" and "L.H." markings.

Musical notation for the third system with lyrics "lark's is a clarion call - And the black bird plays but a" and "R.H." markings.

Musical notation for the fourth system with lyrics "box wood flute. But I love him best of all." and "L.H." markings.



For his

This system contains the first two measures of the piece. The vocal line begins with a whole rest, followed by a half note G4 and a quarter note A4. The piano accompaniment starts with a treble clef and a 7/8 time signature, featuring a melodic line in the right hand and a bass line in the left hand. The system concludes with a double bar line and some scribbled-out notes.

Song is all of the joy of life, and we in the mad spring

This system contains the next two measures. The vocal line continues with a quarter note B4, a quarter note C5, a quarter note B4, and a quarter note A4. The piano accompaniment continues with a similar melodic and bass line structure.

weather We two have listened while he sang our

till

This system contains the next two measures. The vocal line includes a quarter note G4, a quarter note F4, a quarter note E4, and a quarter note D4. The piano accompaniment features a prominent melodic line in the right hand, with 'RH' and 'LH' markings. The system ends with a double bar line.

hearts and lips to - gether

This system contains the final two measures. The vocal line includes a quarter note C4, a quarter note B3, a quarter note A3, and a quarter note G3. The piano accompaniment continues with a melodic line in the right hand and a bass line in the left hand, ending with a double bar line.



--- We two have listened while he till

The first system of the handwritten musical score consists of three staves. The top staff is a vocal line with a treble clef, containing the lyrics "We two have listened while he till". The notes are mostly quarter and eighth notes, with some rests. The piano accompaniment is written on two staves below the vocal line, with a grand staff clef. The right hand (treble clef) plays a series of chords and moving lines, while the left hand (bass clef) provides a harmonic foundation with chords and single notes. The key signature has one flat (B-flat), and the time signature is 4/4.

sang our hearts and lips, our

The second system of the handwritten musical score consists of three staves. The top staff is a vocal line with a treble clef, containing the lyrics "sang our hearts and lips, our". The notes are mostly quarter and eighth notes, with some rests. The piano accompaniment is written on two staves below the vocal line, with a grand staff clef. The right hand (treble clef) plays a series of chords and moving lines, while the left hand (bass clef) provides a harmonic foundation with chords and single notes. The key signature has one flat (B-flat), and the time signature is 4/4.

hearts and lips to - ge - - -

The third system of the handwritten musical score consists of three staves. The top staff is a vocal line with a treble clef, containing the lyrics "hearts and lips to - ge - - -". The notes are mostly quarter and eighth notes, with some rests. The piano accompaniment is written on two staves below the vocal line, with a grand staff clef. The right hand (treble clef) plays a series of chords and moving lines, while the left hand (bass clef) provides a harmonic foundation with chords and single notes. The key signature has one flat (B-flat), and the time signature is 4/4.

- then - - -

The fourth system of the handwritten musical score consists of three staves. The top staff is a vocal line with a treble clef, containing the lyrics "- then - - -". The notes are mostly quarter and eighth notes, with some rests. The piano accompaniment is written on two staves below the vocal line, with a grand staff clef. The right hand (treble clef) plays a series of chords and moving lines, while the left hand (bass clef) provides a harmonic foundation with chords and single notes. The key signature has one flat (B-flat), and the time signature is 4/4.